



FOOTHILL-DE ANZA  
Community College District

# Board of Trustees Presentation



Foothill College



De Anza College

## Santa Clara County Population Projections 2010-2035 and FHDA Enrollment Trends

---

Prepared by Gregory M. Stoup and Andrew LaManque, Ph.D.  
FHDA Office of Institutional Research and Planning  
January 31, 2011

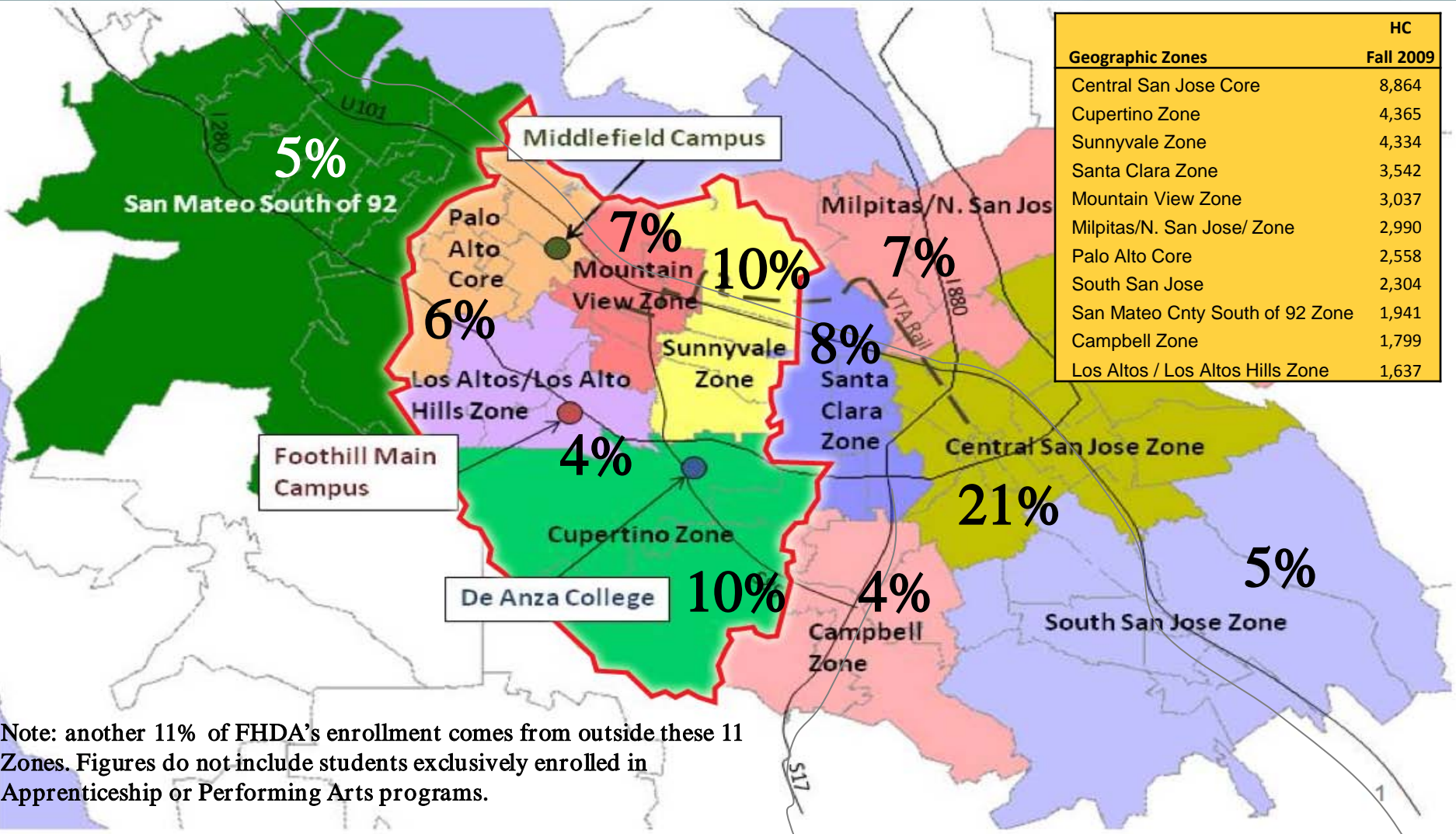


# Methodology

- ABAG Population Projections to 2035
  - By census tract
- Fall 2009 FHDA Enrollment
  - By zip code
- Mapped census tracts to zip codes to “Zones”
- Simulated future FHDA enrollment by applying current enrollment patterns to future population projections



# FHDA Enrollment in Fall 2009 by Zone



Note: another 11% of FHDA's enrollment comes from outside these 11 Zones. Figures do not include students exclusively enrolled in Apprenticeship or Performing Arts programs.

# Projected Population Growth

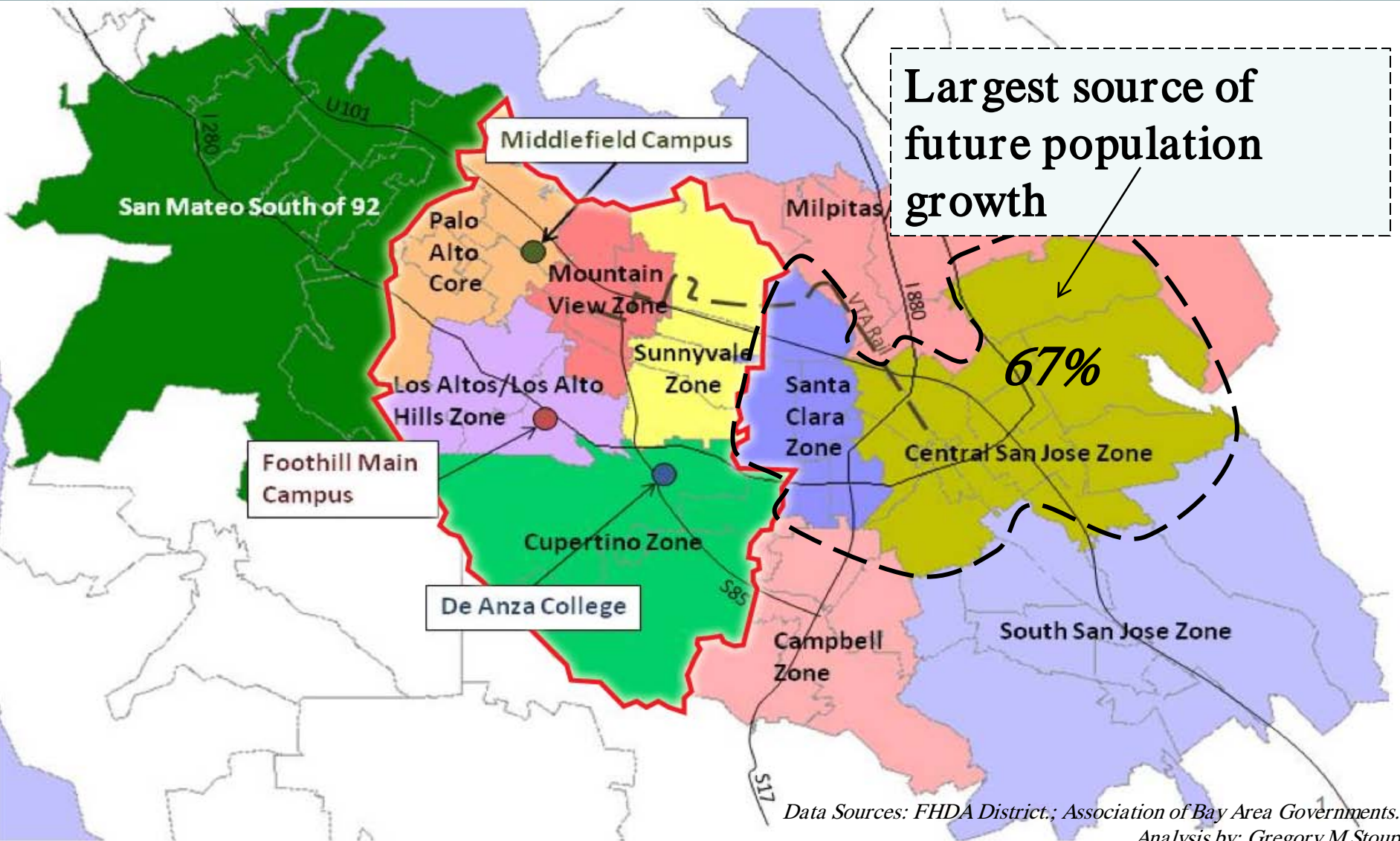
Santa Clara County Population by Zone  
Sorted by Percent of Total Population Change

Zone	2010	2035	Change 2010 to 2035	% of Total Chg
Central San Jose	598,961	890,949	291,988	48%
Santa Clara Zone	191,038	307,180	116,142	19%
South San Jose	373,006	444,340	71,334	12%
Milpitas/N. San Jose	72,500	111,254	38,754	6%
Mountain View Zone	80,319	105,391	25,072	4%
Sunnyvale Zone	116,526	140,529	24,003	4%
Palo Alto Core	74,007	97,957	23,950	4%
Campbell Zone	116,622	127,707	11,085	2%
Cupertino Zone	82,638	85,729	3,091	1%
Los Altos/Los Altos Hills Zone	44,137	46,723	2,586	0%
Total	1,751,764	2,359,794	608,030	100%





# Santa Clara County Population Growth 2010 - 2035



Data Sources: FHDA District; Association of Bay Area Governments.  
Analysis by: Gregory M Stoup



# Projected Income

Mean Household Income (in constant 2005 dollars)  
Sorted by 2035 Projection

Zone	2010	2035
Central San Jose	79,397	96,889
Sunnyvale Zone	90,297	107,790
Santa Clara Zone	86,106	109,098
Mountain View Zone	90,682	111,901
Campbell Zone	91,830	122,156
Milpitas/N. San Jose	98,843	122,464
South San Jose	101,671	130,777
Palo Alto Core	127,459	158,557
Cupertino Zone	131,886	173,576
Los Altos/Los Altos Hills Zone	198,610	259,766
Total	98,633	121,401



# Projected Enrollment

FHDA Enrollment Projections by Zone  
Sorted by Projected 2035 Percent of Enrollment

Zone	Fall 2009		Proj 2035		Percentage Point Change
	HC	%	HC	%	
Central San Jose Core	8,864	21%	12,406	23%	2
Santa Clara Zone	3,542	8%	5,416	10%	2
Sunnyvale Zone	4,334	10%	4,982	9%	-1
Milpitas/N. San Jose	2,990	7%	4,526	8%	1
Cupertino Zone	4,365	10%	4,276	8%	-2
Mountain View Zone	3,037	7%	3,847	7%	0
Palo Alto Core	2,558	6%	3,448	6%	0
South San Jose	2,304	5%	2,617	5%	-1
San Mateo Cnty South of 92 Zone	1,941	5%	2,523	5%	0
Campbell Zone	1,799	4%	1,824	3%	-1
Los Altos / Los Altos Hills Zone	1,637	4%	1,676	3%	-1
All Remaining	4,564	11%	5,938	11%	0
<b>Total</b>	<b>41,935</b>	<b>100%</b>	<b>53,480</b>	<b>100%</b>	

Note: All Remaining and San Mateo Zones assumed to increase by 13%

Projections developed by applying fall 2009 draw rates by zone, age and college to the 2035 projections.

# Summary



FOOTHILL-DE ANZA  
Community College District

- 67% of the population growth is projected to come from the Central San Jose and Santa Clara zones.
- Less than 15% of the population growth is projected to come from of the FHDA District zones.
- A location closer to faster growth zones will likely generate larger enrollment gains than a location near slower growth zones.





FOOTHILL-DE ANZA  
Community College District

# Board of Trustees Presentation



Foothill College



De Anza College

## Questions?

---

Thanks to Lori Susi for help with the district mapping!