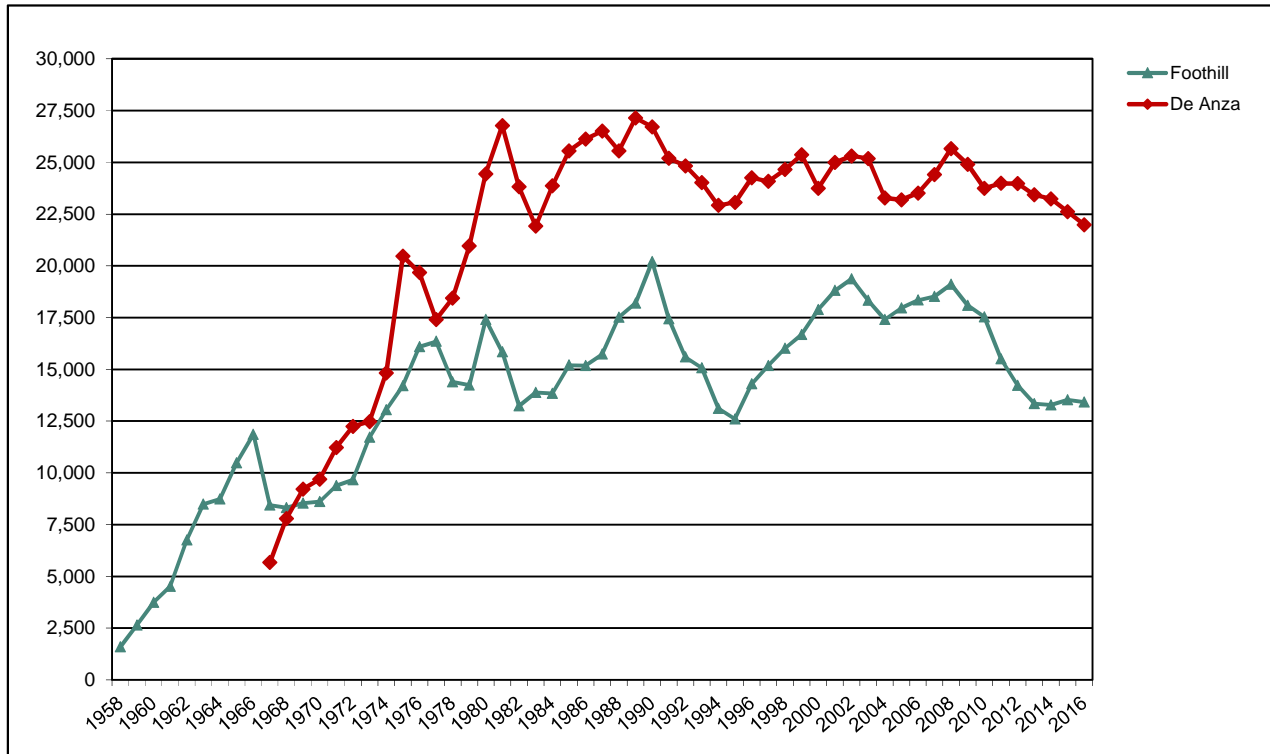


Foothill-De Anza Community College District

Unduplicated Fall End-of-Term Headcount Enrollment  
Foothill and De Anza Colleges, 1958 to 2016



Unduplicated Fall End-of-Term Credit Headcount Enrollment  
Foothill and De Anza Colleges, 1958 to 2016

Fall	Foothill	De Anza	District	Fall	Foothill	De Anza	District	Fall	Foothill	De Anza	District
1958	1,596		1,596	1978	14,389	18,445	32,834	1998	16,018	24,646	40,664
1959	2,647		2,647	1979	14,243	20,953	35,196	1999	16,675	25,370	42,045
1960	3,745		3,745	1980	17,411	24,442	41,853	2000	17,883	23,747	41,630
1961	4,515		4,515	1981	15,838	26,772	42,610	2001	18,804	24,987	43,791
1962	6,756		6,756	1982	13,228	23,819	37,047	2002	19,365	25,307	44,672
1963	8,481		8,481	1983	13,878	21,911	35,789	2003	18,326	25,182	43,508
1964	8,733		8,733	1984	13,835	23,858	37,693	2004	17,406	23,277	40,683
1965	10,475		10,475	1985	15,203	25,555	40,758	2005	17,967	23,191	40,868
1966	11,863		11,863	1986	15,184	26,127	41,311	2006	18,342	23,516	41,858
1967	8,442	5,669	14,111	1987	15,728	26,513	42,241	2007	18,522	24,404	42,926
1968	8,314	7,793	16,107	1988	17,520	25,546	43,066	2008	19,107	25,655	44,762
1969	8,529	9,216	17,745	1989	18,191	27,138	45,329	2009	18,086	24,898	42,984
1970	8,615	9,699	18,314	1990	20,209	26,711	46,920	2010	17,527	23,747	41,274
1971	9,380	11,219	20,599	1991	17,439	25,200	42,639	2011	15,500	23,982	39,482
1972	9,658	12,247	21,905	1992	15,590	24,819	40,409	2012	14,228	23,976	38,204
1973	11,713	12,477	24,190	1993	15,073	24,015	39,088	2013	13,347	23,427	36,774
1974	13,050	14,820	27,870	1994	13,107	22,915	36,022	2014	13,277	23,230	36,507
1975	14,211	20,468	34,679	1995	12,605	23,064	35,669	2015	13,528	22,620	36,148
1976	16,097	19,669	35,766	1996	14,291	24,249	38,540	2016	13,425	21,978	35,403
1977	16,347	17,406	33,753	1997	15,178	24,076	39,254				