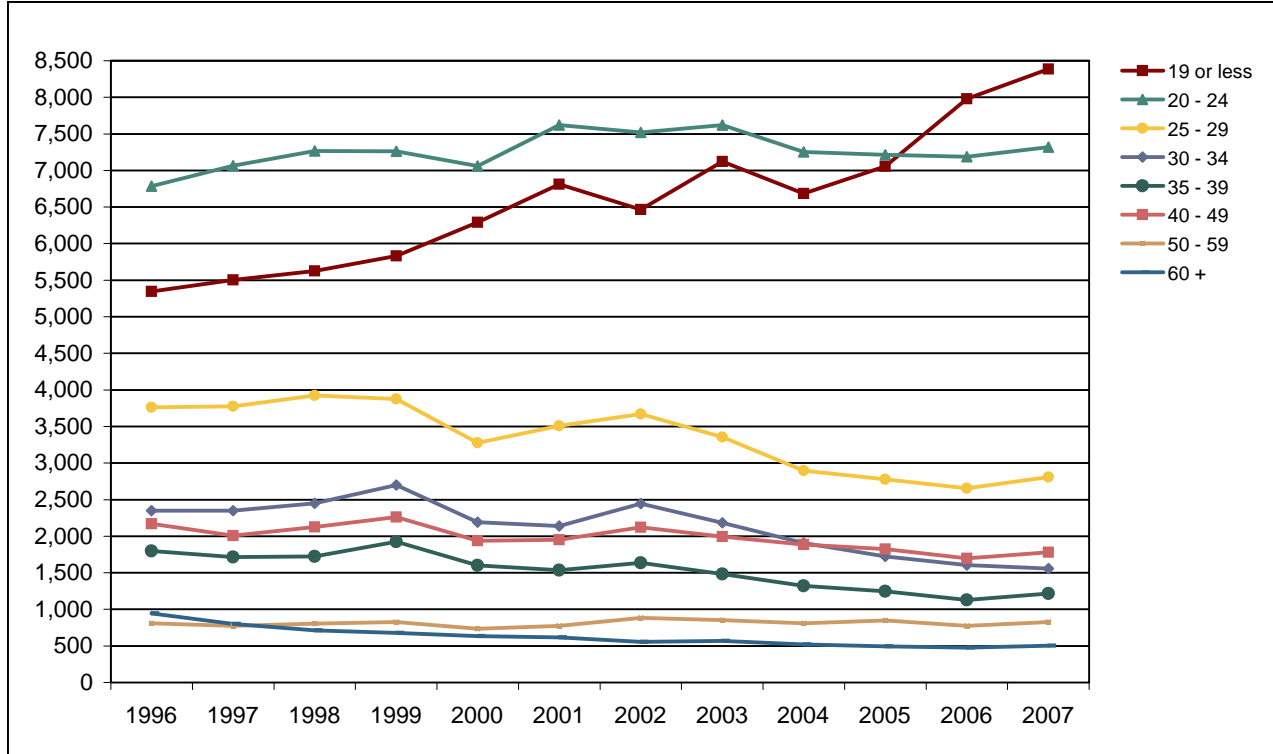


De Anza College

Fall End-of-Term Headcount Frequency Distribution by Age Range



Fall End-of-Term Headcount Frequency Distribution by Age Range

Age Range	1996	1997	1998	1999	2000	2001	2002	2003	2004	2005	2006	2007
19 or less	5,344	5,503	5,628	5,831	6,290	6,812	6,465	7,123	6,686	7,057	7,980	8,385
20 - 24	6,783	7,066	7,267	7,263	7,060	7,621	7,519	7,619	7,253	7,214	7,188	7,319
25 - 29	3,762	3,776	3,922	3,875	3,277	3,510	3,671	3,355	2,896	2,779	2,654	2,809
30 - 34	2,350	2,351	2,451	2,697	2,191	2,138	2,444	2,185	1,907	1,724	1,606	1,557
35 - 39	1,797	1,717	1,723	1,927	1,600	1,534	1,636	1,481	1,319	1,247	1,129	1,217
40 - 49	2,172	2,009	2,125	2,263	1,939	1,952	2,122	1,994	1,885	1,824	1,698	1,781
50 - 59	810	775	805	825	735	775	882	852	808	848	776	829
60 +	946	801	713	678	634	619	555	567	521	495	478	502
Unrecorded	299	85	13	11	21	26	15	6	2	3	7	5
Total	24,263	24,083	24,647	25,370	23,747	24,987	25,309	25,182	23,277	23,191	23,516	24,404

Fall End-of-Term Headcount Percentage Distribution by Age Range

Age Range	1996	1997	1998	1999	2000	2001	2002	2003	2004	2005	2006	2007
19 or less	22.0	22.9	22.8	23.0	26.5	27.3	25.5	28.3	28.7	30.4	33.9	34.4
20 - 24	28.0	29.3	29.5	28.6	29.7	30.5	29.7	30.3	31.2	31.1	30.6	30.0
25 - 29	15.5	15.7	15.9	15.3	13.8	14.0	14.5	13.3	12.4	12.0	11.3	11.5
30 - 34	9.7	9.8	9.9	10.6	9.2	8.6	9.7	8.7	8.2	7.4	6.8	6.4
35 - 39	7.4	7.1	7.0	7.6	6.7	6.1	6.5	5.9	5.7	5.4	4.8	5.0
40 - 49	9.0	8.3	8.6	8.9	8.2	7.8	8.4	7.9	8.1	7.9	7.2	7.3
50 - 59	3.3	3.2	3.3	3.3	3.1	3.1	3.5	3.4	3.5	3.7	3.3	3.4
60 +	3.9	3.3	2.9	2.7	2.7	2.5	2.2	2.3	2.2	2.1	2.0	2.1
Unrecorded	1.2	0.4	0.1	0.0	0.1	0.1	0.1	0.0	0.0	0.0	0.0	0.0
Total	100.0	100.0	100.0	100.0	100.0	100.0	100.0	100.0	100.0	100.0	100.0	100.0