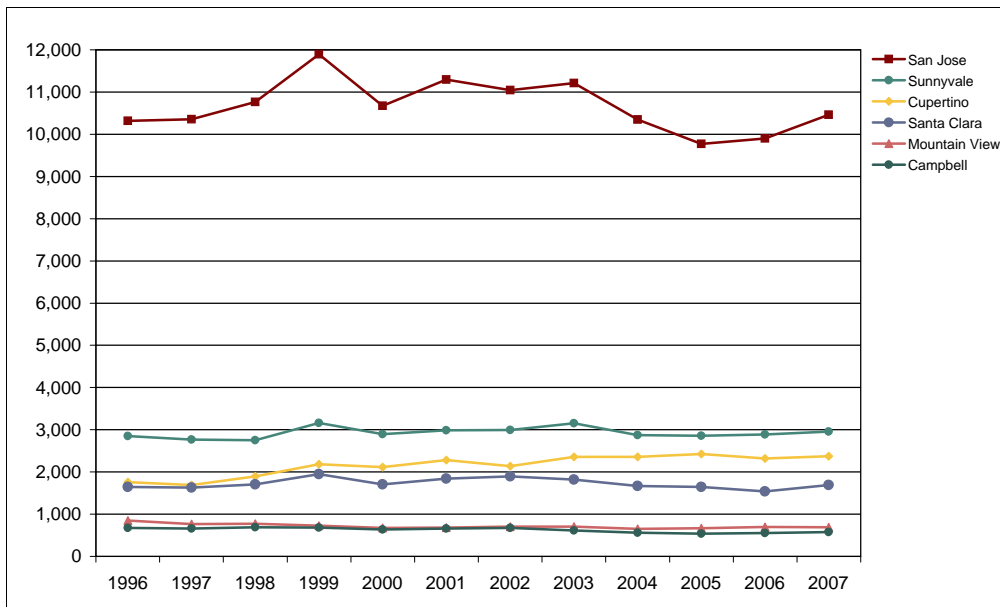


De Anza College

Fall End-of-Term Headcount Frequency Distribution by City of Residence



Fall End-of-Term Headcount Frequency Distribution by City of Residence

City of Residence	1996	1997	1998	1999	2000	2001	2002	2003	2004	2005	2006	2007
San Jose	10,316	10,353	10,767	11,894	10,676	11,295	11,047	11,208	10,350	9,768	9,899	10,459
Mountain View	846	766	771	730	678	683	704	703	650	670	698	690
Palo Alto	299	285	254	280	244	216	233	228	208	229	172	182
Los Altos/Hills	312	291	263	312	263	258	242	253	262	275	263	255
Sunnyvale	2,851	2,768	2,755	3,161	2,898	2,983	2,996	3,156	2,873	2,861	2,887	2,953
Cupertino	1,760	1,687	1,895	2,183	2,116	2,282	2,141	2,361	2,360	2,426	2,319	2,375
Redwood City	158	123	124	170	143	133	140	117	104	96	89	82
Fremont	491	532	552	507	454	478	492	479	446	474	441	481
Menlo Park	98	94	86	105	74	82	95	83	98	88	57	73
Santa Clara	1,648	1,628	1,704	1,950	1,703	1,839	1,893	1,822	1,665	1,644	1,536	1,691
San Mateo	69	85	85	75	75	65	71	55	53	56	65	63
Saratoga	358	375	342	384	393	416	376	418	380	348	383	369
Milpitas	680	669	636	670	633	673	759	771	691	646	659	667
San Francisco	193	185	221	150	163	162	218	337	185	427	159	115
Campbell	673	663	692	679	633	660	671	615	561	537	557	578
East Palo Alto	58	40	32	45	47	41	45	45	61	62	72	72
Portola Valley	17	11	15	17	12	11	11	4	5	10	4	9
Los Gatos	382	364	340	378	331	342	290	332	307	336	336	334
San Carlos	48	30	23	30	21	24	26	25	24	26	28	30
Gilroy	106	119	114	179	142	102	106	91	95	84	85	95
Millbrae	9	10	14	13	9	8	15	8	11	14	15	12
Others	2,877	2,998	2,961	1,458	2,039	2,234	2,736	2,071	1,888	2,114	2,792	2,819
Total	24,249	24,076	24,646	25,370	23,747	24,987	25,307	25,182	23,277	23,191	23,516	24,404

Fall End-of-Term Headcount Percentage Distribution by City of Residence

City of Residence	1996	1997	1998	1999	2000	2001	2002	2003	2004	2005	2006	2007
San Jose	42.5	43.0	43.7	46.9	45.0	45.2	43.7	44.5	44.5	42.1	42.1	42.9
Mountain View	3.5	3.2	3.1	2.9	2.9	2.7	2.8	2.8	2.8	2.9	3.0	2.8
Palo Alto	1.2	1.2	1.0	1.1	1.0	0.9	0.9	0.9	0.9	1.0	0.7	0.7
Los Altos/Hills	1.3	1.2	1.1	1.2	1.1	1.0	1.0	1.0	1.1	1.2	1.1	1.0
Sunnyvale	11.8	11.5	11.2	12.5	12.2	11.9	11.8	12.5	12.3	12.3	12.3	12.1
Cupertino	7.3	7.0	7.7	8.6	8.9	9.1	8.5	9.4	10.1	10.5	9.9	9.7
Redwood City	0.7	0.5	0.5	0.7	0.6	0.5	0.6	0.5	0.4	0.4	0.4	0.3
Fremont	2.0	2.2	2.2	2.0	1.9	1.9	1.9	1.9	1.9	2.0	1.9	2.0
Menlo Park	0.4	0.4	0.3	0.4	0.3	0.3	0.4	0.3	0.4	0.4	0.2	0.3
Santa Clara	6.8	6.8	6.9	7.7	7.2	7.4	7.5	7.2	7.2	7.1	6.5	6.9
San Mateo	0.3	0.4	0.3	0.3	0.3	0.3	0.3	0.2	0.2	0.2	0.3	0.3
Saratoga	1.5	1.6	1.4	1.5	1.7	1.7	1.5	1.7	1.6	1.5	1.6	1.5
Milpitas	2.8	2.8	2.6	2.6	2.7	2.7	3.0	3.1	3.0	2.8	2.8	2.7
Campbell	0.2	0.1	0.1	0.1	0.1	0.1	0.1	0.1	0.1	0.1	0.1	0.1
East Palo Alto	0.4	0.5	0.5	0.7	0.6	0.4	0.4	0.4	0.4	0.4	0.4	0.4
Los Gatos	0.0	0.0	0.1	0.1	0.0	0.0	0.1	0.0	0.0	0.1	0.1	0.0
Others	11.9	12.5	12.0	5.7	8.6	8.9	10.8	8.2	8.1	9.1	11.9	11.6
Total	100.0	100.0	100.0	100.0	100.0	100.0	100.0	100.0	100.0	100.0	100.0	100.0