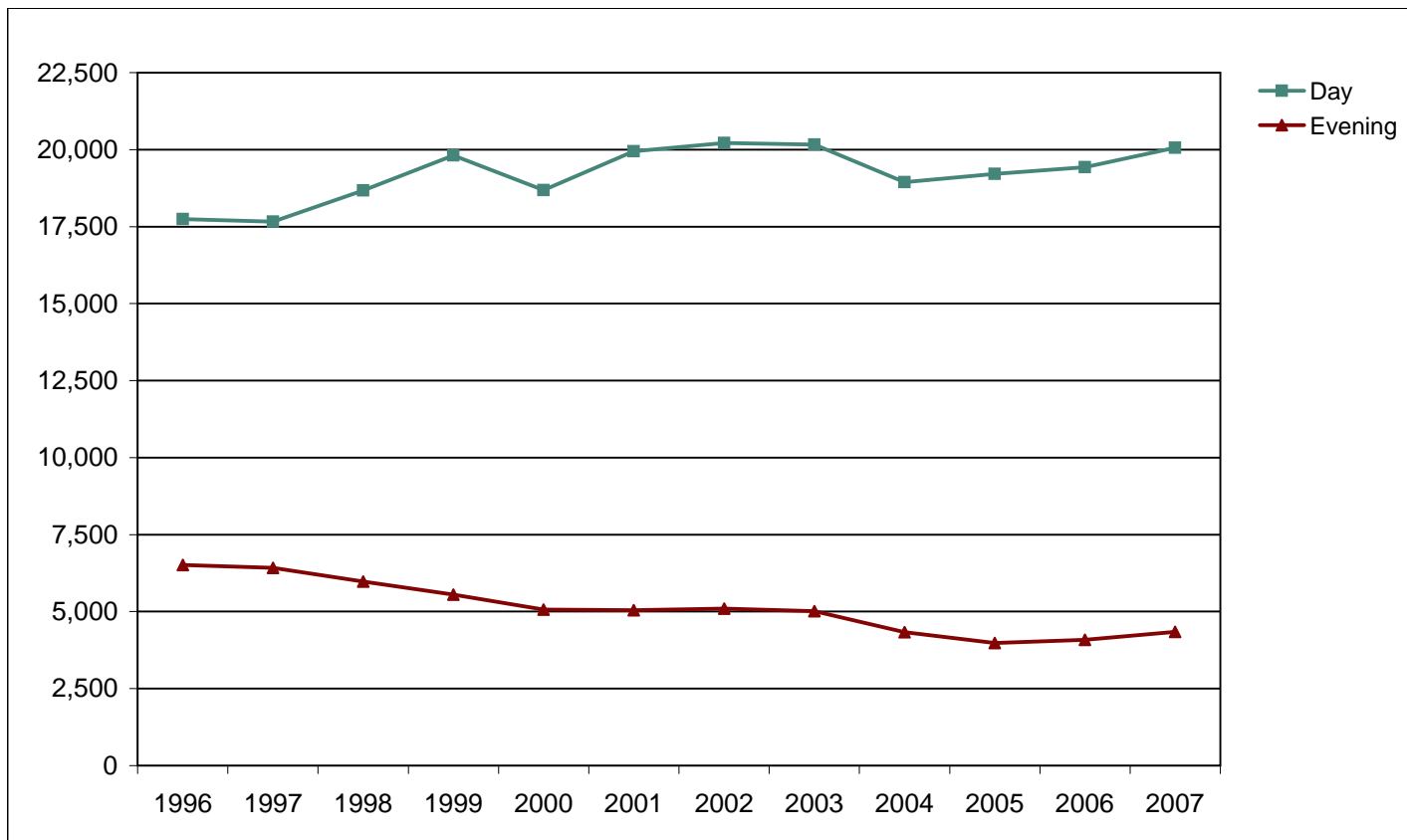




De Anza College

Fall End-of-Term Headcount Frequency Distribution by Day Evening Status



Fall End-of-Term Headcount Frequency Distribution by Day Evening Status

Day Evening	1996	1997	1998	1999	2000	2001	2002	2003	2004	2005	2006	2007
Day	17,747	17,662	18,676	19,813	18,685	19,942	20,213	20,167	18,942	19,211	19,427	20,060
Evening	6,516	6,421	5,981	5,557	5,062	5,045	5,096	5,015	4,335	3,980	4,089	4,344
Total	24,263	24,083	24,657	25,370	23,747	24,987	25,309	25,182	23,277	23,191	23,516	24,404

Fall End-of-Term Headcount Percentage Distribution by Day Evening Status

Day Evening	1996	1997	1998	1999	2000	2001	2002	2003	2004	2005	2006	2007
Day	73.1	73.3	75.7	78.1	78.7	79.8	79.9	80.1	81.4	82.8	82.6	82.2
Evening	26.9	26.7	24.3	21.9	21.3	20.2	20.1	19.9	18.6	17.2	17.4	17.8
Total	100.0	100.0	100.0	100.0	100.0	100.0	100.0	100.0	100.0	100.0	100.0	100.0