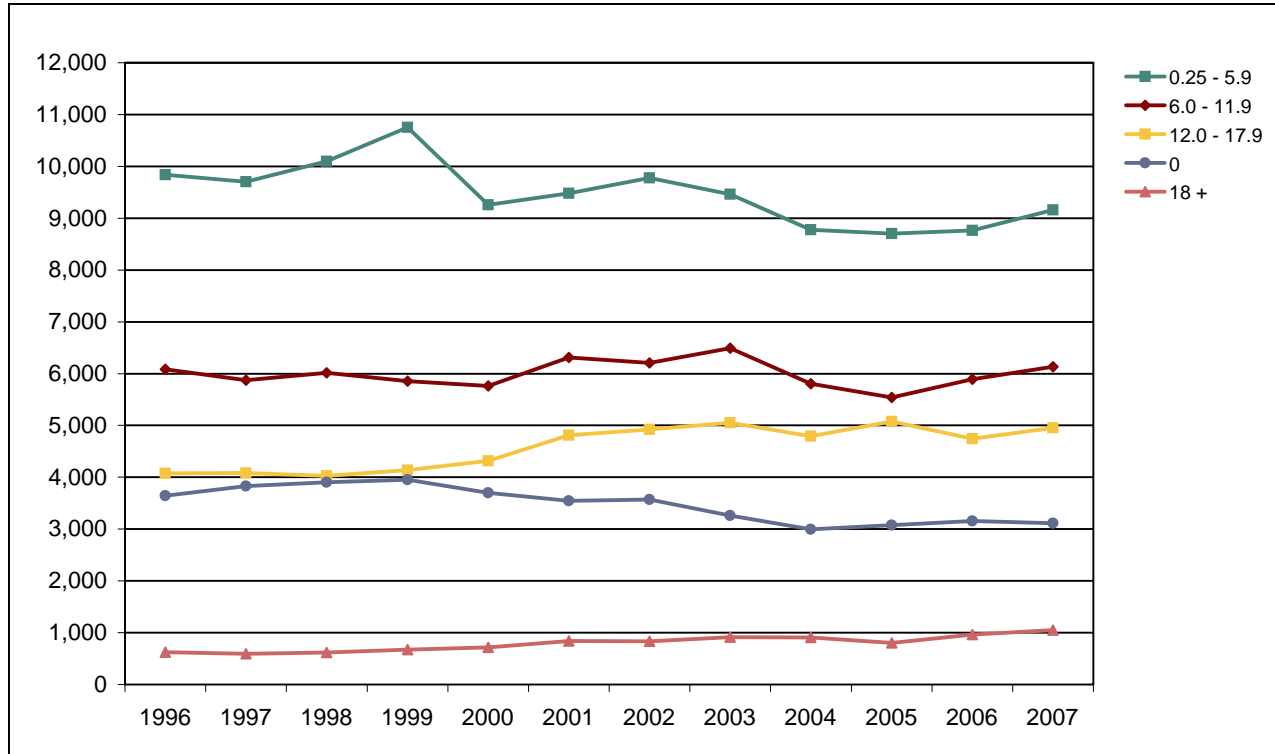


De Anza College

Fall End-of-Term Headcount Frequency Distribution by Earned Units



Fall End-of-Term Headcount Frequency Distribution by Earned Units

Earned Units	1996	1997	1998	1999	2000	2001	2002	2003	2004	2005	2006	2007
0	3,641	3,832	3,901	3,952	3,697	3,545	3,569	3,258	2,994	3,073	3,157	3,113
0.25 - 2.9	2,776	2,742	2,851	3,973	2,861	2,680	2,643	2,425	2,165	2,055	2,122	2,288
3.0 - 5.9	7,063	6,958	7,248	6,781	6,395	6,799	7,134	7,036	6,614	6,648	6,639	6,871
6.0 - 8.9	2,981	2,844	2,832	2,826	2,756	2,969	2,695	2,940	2,521	2,459	2,761	3,052
9.0 - 11.9	3,102	3,032	3,185	3,026	3,007	3,344	3,514	3,553	3,285	3,079	3,130	3,079
12.0 - 14.9	2,948	2,992	2,820	2,938	3,033	3,391	3,546	3,701	3,444	3,726	3,285	3,481
15.0 - 17.9	1,126	1,093	1,205	1,203	1,283	1,421	1,374	1,354	1,348	1,348	1,459	1,471
18.0 - 20.9	533	440	514	564	602	698	677	768	738	673	766	846
21 +	93	150	101	107	113	140	157	147	168	130	197	203
Total	24,263	24,083	24,657	25,370	23,747	24,987	25,309	25,182	23,277	23,191	23,516	24,404

Fall End-of-Term Headcount Percentage Distribution by Earned Units

Earned Units	1996	1997	1998	1999	2000	2001	2002	2003	2004	2005	2006	2007
0	15.0	15.9	15.8	15.6	15.6	14.2	14.1	12.9	12.9	13.3	13.4	12.8
0.25 - 2.9	11.4	11.4	11.6	15.7	12.0	10.7	10.4	9.6	9.3	8.9	9.0	9.4
3.0 - 5.9	29.1	28.9	29.4	26.7	26.9	27.2	28.2	27.9	28.4	28.7	28.2	28.2
6.0 - 8.9	12.3	11.8	11.5	11.1	11.6	11.9	10.6	11.7	10.8	10.6	11.7	12.5
9.0 - 11.9	12.8	12.6	12.9	11.9	12.7	13.4	13.9	14.1	14.1	13.3	13.3	12.6
12.0 - 14.9	12.2	12.4	11.4	11.6	12.8	13.6	14.0	14.7	14.8	16.1	14.0	14.3
15.0 - 17.9	4.6	4.5	4.9	4.7	5.4	5.7	5.4	5.4	5.8	5.8	6.2	6.0
18.0 - 20.9	2.2	1.8	2.1	2.2	2.5	2.8	2.7	3.0	3.2	2.9	3.3	3.5
21 +	0.4	0.6	0.4	0.4	0.5	0.6	0.6	0.6	0.7	0.6	0.8	0.8
Total	100.0	100.0	100.0	100.0	100.0	100.0	100.0	100.0	100.0	100.0	100.0	100.0