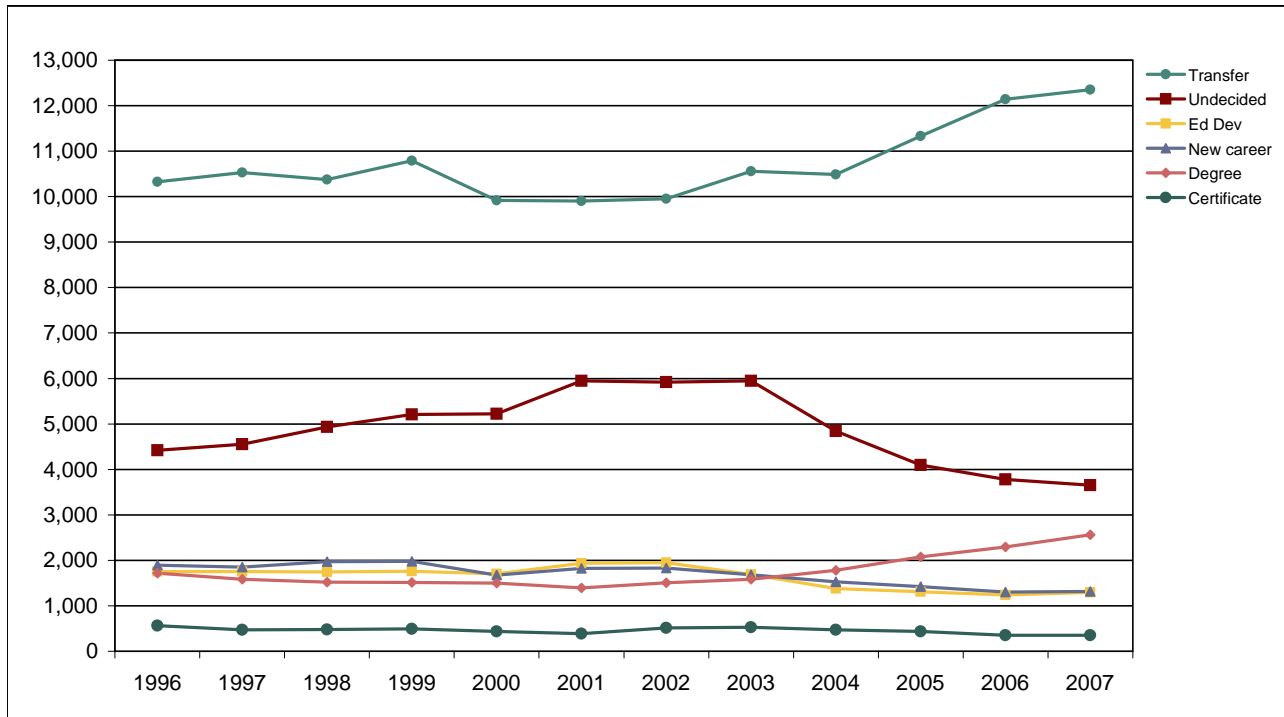


De Anza College

Fall End-of-Term Headcount Frequency Distribution by Educational Goal



Fall End-of-Term Headcount Frequency Distribution by Educational Goal

Educational Goal	1996	1997	1998	1999	2000	2001	2002	2003	2004	2005	2006	2007
Transfer after AA/AS	7,255	7,485	7,410	7,929	7,250	7,336	7,041	7,300	7,281	8,165	8,916	9,159
Transfer without AA/AS	3,069	3,047	2,962	2,858	2,667	2,568	2,913	3,260	3,203	3,169	3,226	3,192
AA/AS	1,363	1,233	1,172	1,156	1,143	1,049	1,106	1,192	1,491	1,838	2,105	2,394
Vocational Degree	352	348	346	360	359	344	401	391	291	237	188	171
Vocational Certificate	560	473	479	493	439	388	515	530	475	436	352	349
Formulate plans, goals	1,250	1,148	1,252	1,178	1,150	1,524	1,309	1,232	1,092	944	863	803
New career	1,893	1,848	1,973	1,975	1,678	1,825	1,829	1,685	1,529	1,425	1,299	1,314
Advance in job	1,292	1,337	1,424	1,433	1,282	1,164	1,197	827	691	679	708	686
Maintain certificate/license	343	298	277	408	250	242	361	367	380	343	310	317
Educational Development	1,755	1,754	1,745	1,757	1,703	1,938	1,949	1,689	1,382	1,311	1,239	1,293
Improve basic skills	397	317	394	396	392	383	424	401	362	288	264	251
Credit for HS or GED	242	195	247	183	174	242	311	336	230	237	240	199
Undecided	4,418	4,555	4,931	5,205	5,223	5,948	5,920	5,945	4,842	4,099	3,782	3,653
Unrecorded	74	45	45	39	37	36	33	27	28	20	24	623
Total	24,263	24,083	24,657	25,370	23,747	24,987	25,309	25,182	23,277	23,191	23,516	24,404

Fall End-of-Term Headcount Percentage Distribution by Educational Goal

Educational Goal	1996	1997	1998	1999	2000	2001	2002	2003	2004	2005	2006	2007
Transfer after AA/AS	29.9	31.1	30.1	31.3	30.5	29.4	27.8	29.0	31.3	35.2	37.9	37.5
Transfer without AA/AS	12.6	12.7	12.0	11.3	11.2	10.3	11.5	12.9	13.8	13.7	13.7	13.1
AA/AS	5.6	5.1	4.8	4.6	4.8	4.2	4.4	4.7	6.4	7.9	9.0	9.8
Vocational Degree	1.5	1.4	1.4	1.4	1.5	1.4	1.6	1.6	1.3	1.0	0.8	0.7
Vocational Certificate	2.3	2.0	1.9	1.9	1.8	1.6	2.0	2.1	2.0	1.9	1.5	1.4
Formulate plans, goals	5.2	4.8	5.1	4.6	4.8	6.1	5.2	4.9	4.7	4.1	3.7	3.3
New career	7.8	7.7	8.0	7.8	7.1	7.3	7.2	6.7	6.6	6.1	5.5	5.4
Advance in job	5.3	5.6	5.8	5.6	5.4	4.7	4.7	3.3	3.0	2.9	3.0	2.8
Maintain certificate/license	1.4	1.2	1.1	1.6	1.1	1.0	1.4	1.5	1.6	1.5	1.3	1.3
Educational Development	7.2	7.3	7.1	6.9	7.2	7.8	7.7	6.7	5.9	5.7	5.3	5.3
Improve basic skills	1.6	1.3	1.6	1.6	1.7	1.5	1.7	1.6	1.6	1.2	1.1	1.0
Credit for HS or GED	1.0	0.8	1.0	0.7	0.7	1.0	1.2	1.3	1.0	1.0	1.0	0.8
Undecided	18.2	18.9	20.0	20.5	22.0	23.8	23.4	23.6	20.8	17.7	16.1	15.0
Unrecorded	0.3	0.2	0.2	0.2	0.2	0.1	0.1	0.1	0.1	0.1	0.1	2.6
Total	100.0	100.0	100.0	100.0	100.0	100.0	100.0	100.0	100.0	100.0	100.0	100.0