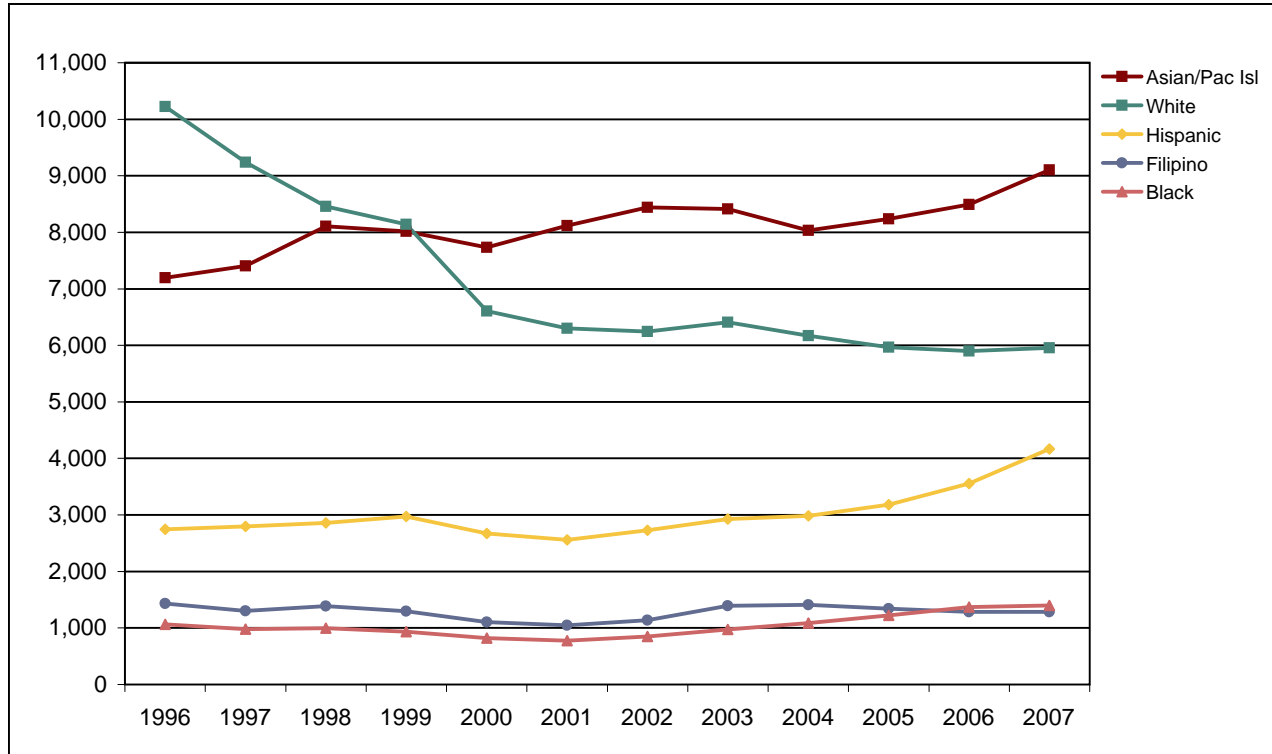


De Anza College

Fall End-of-Term Headcount Frequency Distribution by Ethnicity



Fall End-of-Term Headcount Frequency Distribution by Ethnicity

Ethnicity	1996	1997	1998	1999	2000	2001	2002	2003	2004	2005	2006	2007
Asian	7,005	7,185	7,890	7,786	7,444	7,784	8,121	8,186	7,844	8,053	8,278	8,868
Black	1,063	981	999	936	823	774	847	974	1,086	1,221	1,372	1,396
Filipino	1,430	1,303	1,385	1,294	1,106	1,050	1,139	1,393	1,407	1,341	1,286	1,283
Hispanic	2,744	2,796	2,859	2,971	2,671	2,560	2,728	2,929	2,986	3,183	3,556	4,164
Native Am	229	203	194	166	149	113	119	127	110	131	119	145
Pacific Islander	193	222	215	231	290	334	320	226	190	184	212	238
White	10,227	9,242	8,458	8,140	6,605	6,300	6,245	6,409	6,172	5,969	5,897	5,954
Other	386	419	379	365	407	478	468	422	338	515	647	676
Unrecorded	886	1,732	2,278	3,481	4,252	5,594	5,322	4,516	3,144	2,594	2,149	1,680
Total	24,163	24,083	24,657	25,370	23,747	24,987	25,309	25,182	23,277	23,191	23,516	24,404

Fall End-of-Term Headcount Percentage Distribution by Ethnicity

Ethnicity	1996	1997	1998	1999	2000	2001	2002	2003	2004	2005	2006	2007
Asian	29.0	29.8	32.0	30.7	31.3	31.2	32.1	32.5	33.7	34.7	35.2	36.3
Black	4.4	4.1	4.1	3.7	3.5	3.1	3.3	3.9	4.7	5.3	5.8	5.7
Filipino	5.9	5.4	5.6	5.1	4.7	4.2	4.5	5.5	6.0	5.8	5.5	5.3
Hispanic	11.4	11.6	11.6	11.7	11.2	10.2	10.8	11.6	12.8	13.7	15.1	17.1
Native Am	0.9	0.8	0.8	0.7	0.6	0.5	0.5	0.5	0.5	0.6	0.5	0.6
Pacific Islander	0.8	0.9	0.9	0.9	1.2	1.3	1.3	0.9	0.8	0.8	0.9	1.0
White	42.3	38.4	34.3	32.1	27.8	25.2	24.7	25.5	26.5	25.7	25.1	24.4
Other	1.6	1.7	1.5	1.4	1.7	1.9	1.8	1.7	1.5	2.2	2.8	2.8
Unrecorded	3.7	7.2	9.2	13.7	17.9	22.4	21.0	17.9	13.5	11.2	9.1	6.9
Total	100.0	100.0	100.0	100.0	100.0	100.0	100.0	100.0	100.0	100.0	100.0	100.0