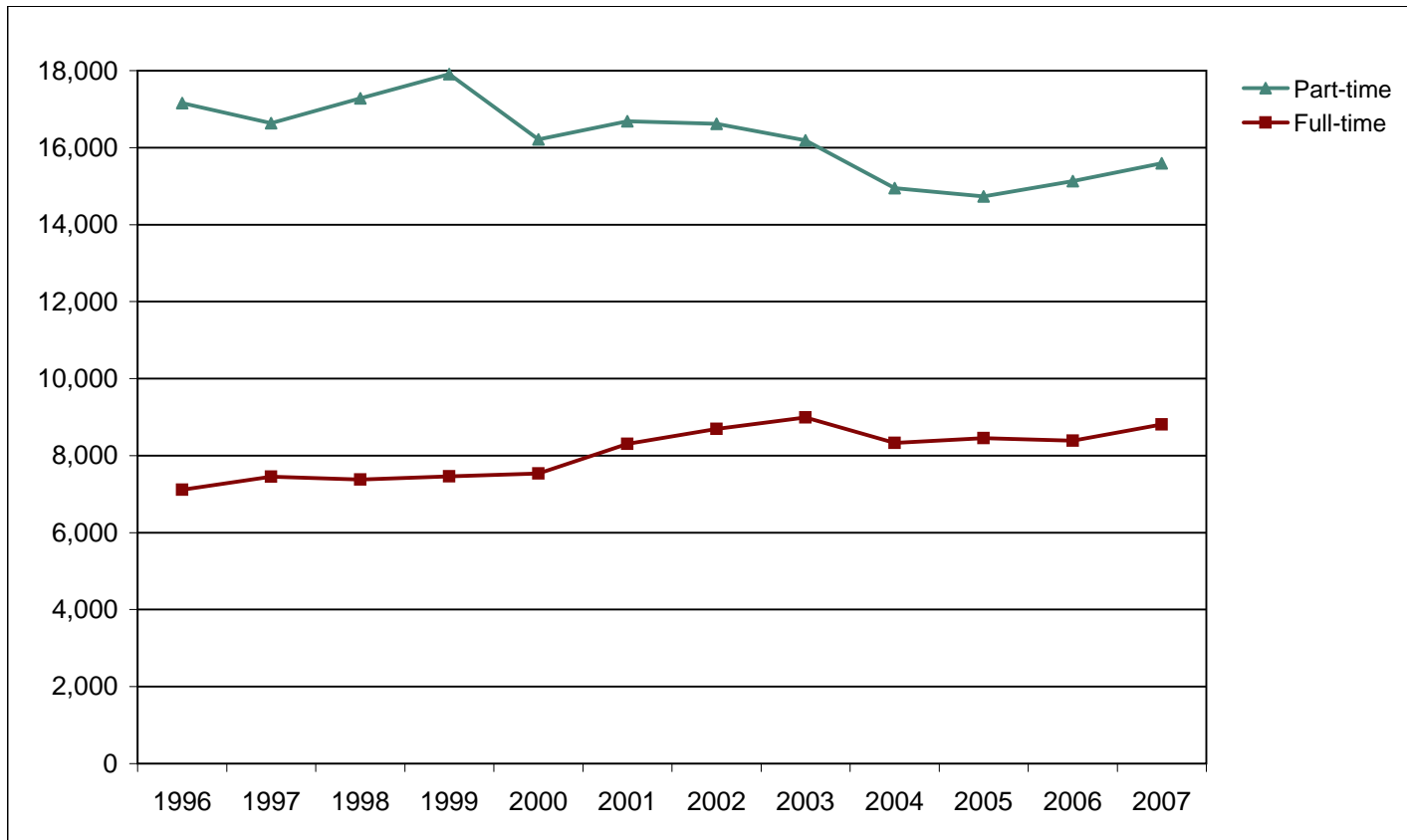




De Anza College

Fall End-of-Term Headcount Frequency Distribution by Full/Part-time Status



Fall End-of-Term Headcount Frequency Distribution by Full/Part-time Status

Full Part Stat	1996	1997	1998	1999	2000	2001	2002	2003	2004	2005	2006	2007
Full-time	7,110	7,452	7,377	7,458	7,536	8,305	8,694	8,990	8,330	8,456	8,390	8,812
Part-time	17,153	16,631	17,280	17,912	16,211	16,682	16,615	16,192	14,947	14,735	15,126	15,592
Total	24,263	24,083	24,657	25,370	23,747	24,987	25,309	25,182	23,277	23,191	23,516	24,404

Fall End-of-Term Headcount Percentage Distribution by Full/Part-time Status

Full Part Stat	1996	1997	1998	1999	2000	2001	2002	2003	2004	2005	2006	2007
Full-time	29.3	30.9	29.9	29.4	31.7	33.2	34.4	35.7	35.8	36.5	35.7	36.1
Part-time	70.7	69.1	70.1	70.6	68.3	66.8	65.6	64.3	64.2	63.5	64.3	63.9
Total	100.0	100.0	100.0	100.0	100.0	100.0	100.0	100.0	100.0	100.0	100.0	100.0

*Full/Part-time status based on end-of-term Attempted Units.

FHDA IR&P - 2/8/07; 2/25/08