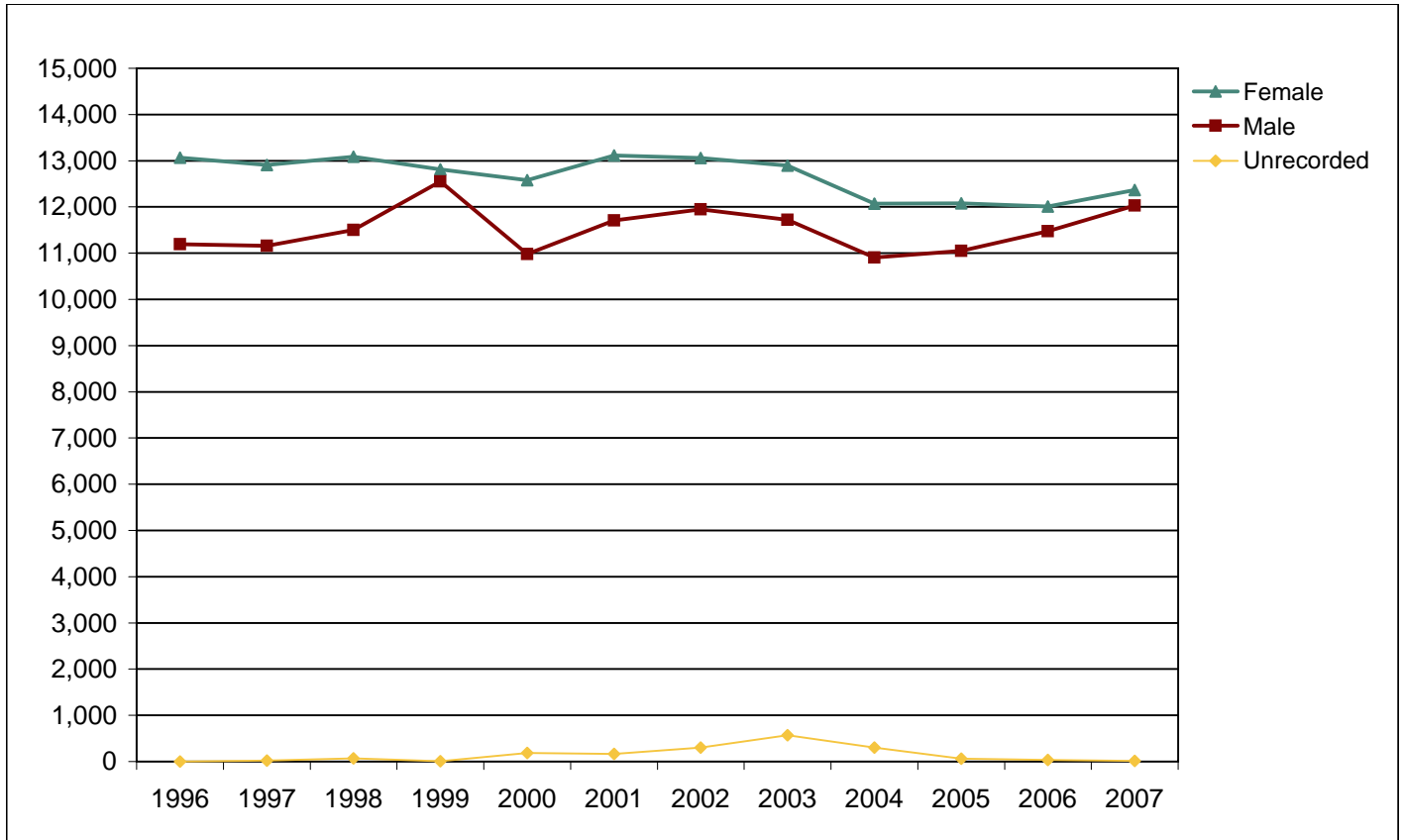


De Anza College

Fall End-of-Term Headcount Frequency Distribution by Gender



Fall End-of-Term Headcount Frequency Distribution by Gender

Gender	1996	1997	1998	1999	2000	2001	2002	2003	2004	2005	2006	2007
Male	11,194	11,159	11,501	12,551	10,981	11,709	11,947	11,719	10,903	11,049	11,473	12,027
Female	13,068	12,905	13,085	12,809	12,582	13,116	13,059	12,895	12,072	12,077	12,012	12,365
Unrecorded	1	19	71	10	184	162	303	568	302	65	31	12
Total	24,263	24,083	24,657	25,370	23,747	24,987	25,309	25,182	23,277	23,191	23,516	24,404

Fall End-of-Term Headcount Percentage Distribution by Gender

Gender	1996	1997	1998	1999	2000	2001	2002	2003	2004	2005	2006	2007
Male	46.1	46.3	46.6	49.5	46.2	46.9	47.2	46.5	46.8	47.6	48.8	49.3
Female	53.9	53.6	53.1	50.5	53.0	52.5	51.6	51.2	51.9	52.1	51.1	50.7
Unrecorded	0.0	0.1	0.3	0.0	0.8	0.6	1.2	2.3	1.3	0.3	0.1	0.0
Total	100.0	100.0	100.0	100.0	100.0	100.0	100.0	100.0	100.0	100.0	100.0	100.0