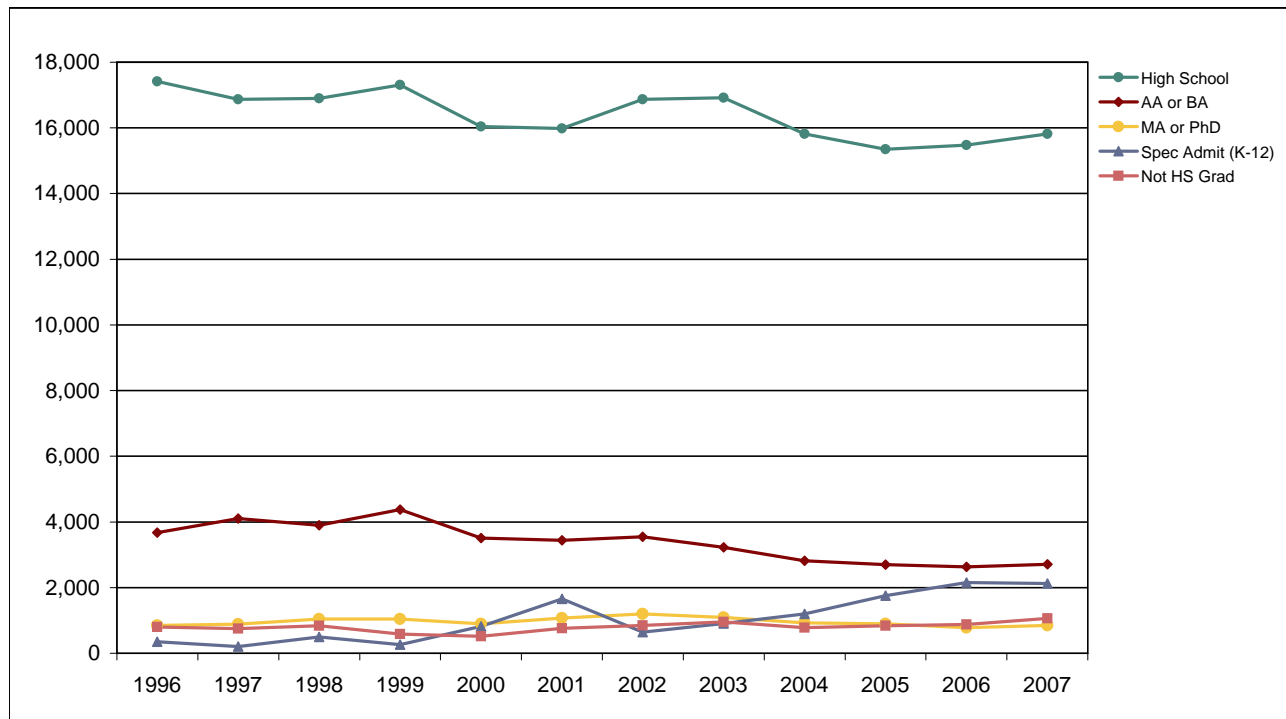


De Anza College

Fall End-of-Term Headcount Frequency Distribution by Highest Educational Level



Fall End-of-Term Headcount Frequency Distribution by Highest Educational Level

Highest Education	1996	1997	1998	1999	2000	2001	2002	2003	2004	2005	2006	2007
Not HS Grad	799	749	840	588	521	757	851	952	780	836	876	1,065
Spec Admit (K-12)	354	202	497	260	819	1,654	647	910	1,196	1,754	2,149	2,120
Adult School	125	88	94	82	99	373	241	220	397	389	384	238
HS Diploma	14,587	14,246	14,239	14,658	13,420	12,963	13,643	13,610	12,541	12,044	12,195	12,594
Passed GED	776	726	742	673	835	1,246	1,651	1,670	1,240	995	839	835
CA Certificate	228	267	255	475	436	382	529	391	309	240	237	219
Foreign Secondary	1,698	1,545	1,573	1,416	1,248	1,018	803	1,029	1,329	1,679	1,824	1,933
AA/AS	1,352	1,618	1,369	1,645	1,336	1,177	1,194	1,075	855	841	828	858
BA/BS	2,325	2,489	2,525	2,730	2,174	2,267	2,355	2,148	1,958	1,862	1,803	1,855
MA/MS	838	842	992	956	816	987	1,096	990	827	807	696	753
Doctorate	11	43	47	88	77	83	101	99	97	89	82	99
Foreign Degree	1,032	1,213	1,444	1,797	1,959	2,048	2,177	2,060	1,699	1,601	1,441	1,490
Unrecorded	138	55	40	2	7	32	21	28	49	54	162	345
Total	24,263	24,083	24,657	25,370	23,747	24,987	25,309	25,182	23,277	23,191	23,516	24,404

Fall End-of-Term Headcount Percentage Distribution by Highest Educational Level

Highest Education	1996	1997	1998	1999	2000	2001	2002	2003	2004	2005	2006	2007
Not HS Grad	3.3	3.1	3.4	2.3	2.2	3.0	3.4	3.8	3.4	3.6	3.7	4.4
Spec Admit (K-12)	1.5	0.8	2.0	1.0	3.4	6.6	2.6	3.6	5.1	7.6	9.1	8.7
Adult School	0.5	0.4	0.4	0.3	0.4	1.5	1.0	0.9	1.7	1.7	1.6	1.0
HS Diploma	60.1	59.2	57.7	57.8	56.5	51.9	53.9	54.0	53.9	51.9	51.9	51.6
Passed GED	3.2	3.0	3.0	2.7	3.5	5.0	6.5	6.6	5.3	4.3	3.6	3.4
CA Certificate	0.9	1.1	1.0	1.9	1.8	1.5	2.1	1.6	1.3	1.0	1.0	0.9
Foreign Secondary	7.0	6.4	6.4	5.6	5.3	4.1	3.2	4.1	5.7	7.2	7.8	7.9
AA/AS	5.6	6.7	5.6	6.5	5.6	4.7	4.7	4.3	3.7	3.6	3.5	3.5
BA/BS	9.6	10.3	10.2	10.8	9.2	9.1	9.3	8.5	8.4	8.0	7.7	7.6
MA/MS	3.5	3.5	4.0	3.8	3.4	4.0	4.3	3.9	3.6	3.5	3.0	3.1
Doctorate	0.0	0.2	0.2	0.3	0.3	0.3	0.4	0.4	0.4	0.4	0.3	0.4
Foreign Degree	4.3	5.0	5.9	7.1	8.2	8.2	8.6	8.2	7.3	6.9	6.1	6.1
Unrecorded	0.6	0.2	0.2	0.0	0.0	0.1	0.1	0.1	0.2	0.2	0.7	1.4
Total	100.0	100.0	100.0	100.0	100.0	100.0	100.0	100.0	100.0	100.0	100.0	100.0