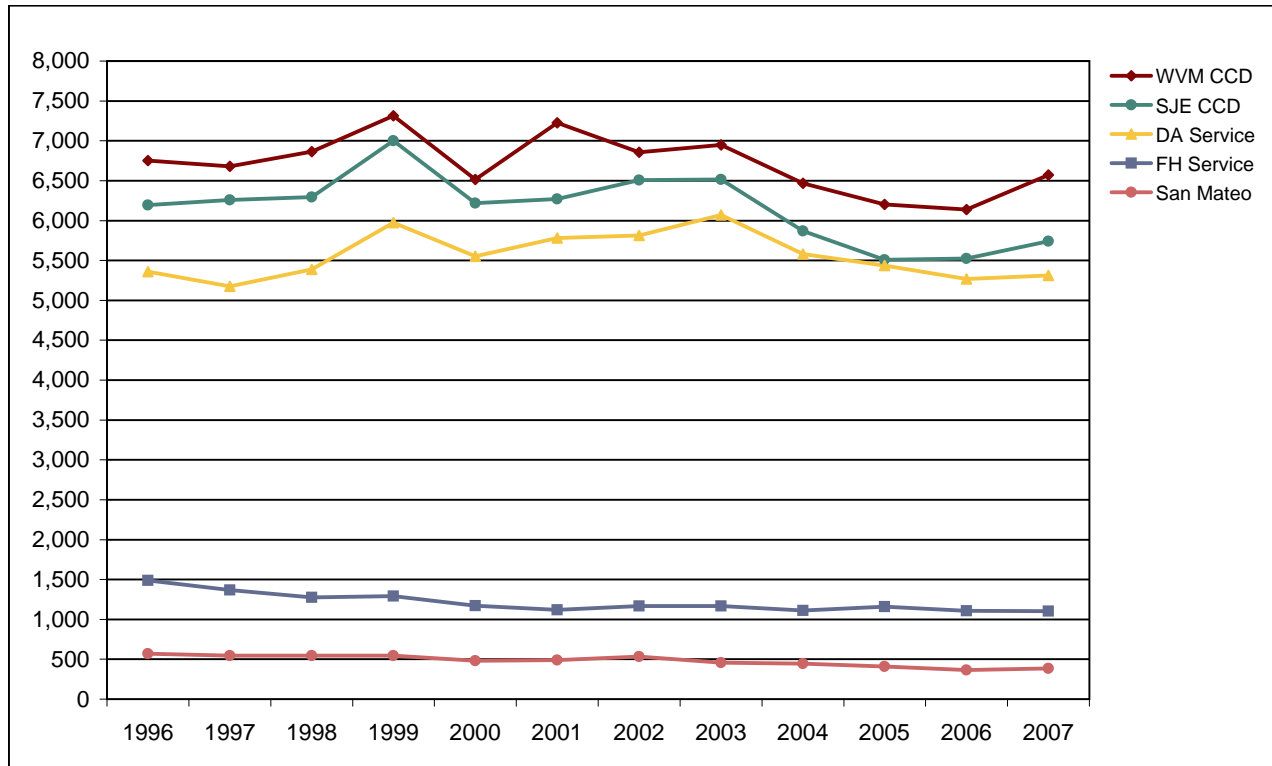


De Anza College

Fall End-of-Term Headcount Frequency Distribution by District of Residence



Fall End-of-Term Headcount Frequency Distribution by District of Residence

District of Re	1996	1997	1998	1999	2000	2001	2002	2003	2004	2005	2006	2007
FH Service	1,490	1,367	1,274	1,290	1,171	1,120	1,168	1,168	1,112	1,160	1,106	1,103
DA Service	5,361	5,175	5,387	5,974	5,551	5,783	5,812	6,070	5,579	5,435	5,268	5,313
SJE CCD	6,194	6,258	6,294	7,001	6,219	6,270	6,508	6,516	5,869	5,509	5,526	5,741
WVM CCD	6,751	6,681	6,866	7,314	6,516	7,227	6,858	6,947	6,466	6,201	6,139	6,572
San Mateo Ct	570	547	546	545	481	490	535	457	445	410	367	386
Gavilan CCD	366	375	379	487	405	339	315	335	307	286	269	279
Other Calif	2,926	3,052	3,021	1,487	2,001	2,268	2,723	2,286	2,044	2,570	2,967	2,975
Out of State	106	114	130	183	160	157	131	78	149	221	276	311
Foreign	485	507	749	1,089	1,243	1,333	1,257	1,325	1,306	1,399	1,598	1,724
Total	24,249	24,076	24,646	25,370	23,747	24,987	25,307	25,182	23,277	23,191	23,516	24,404

Fall End-of-Term Headcount Percentage Distribution by District of Residence

District of Re	1996	1997	1998	1999	2000	2001	2002	2003	2004	2005	2006	2007
FH Service	6.1	5.7	5.2	5.1	4.9	4.5	4.6	4.6	4.8	5.0	4.7	4.5
DA Service	22.1	21.5	21.9	23.5	23.4	23.1	23.0	24.1	24.0	23.4	22.4	21.8
SJE CCD	25.5	26.0	25.5	27.6	26.2	25.1	25.7	25.9	25.2	23.8	23.5	23.5
WVM CCD	27.8	27.7	27.9	28.8	27.4	28.9	27.1	27.6	27.8	26.7	26.1	26.9
San Mateo Ct	2.4	2.3	2.2	2.1	2.0	2.0	2.1	1.8	1.9	1.8	1.6	1.6
Gavilan CCD	1.5	1.6	1.5	1.9	1.7	1.4	1.2	1.3	1.3	1.2	1.1	1.1
Other Calif	12.1	12.7	12.3	5.9	8.4	9.1	10.8	9.1	8.8	11.1	12.6	12.2
Out of State	0.4	0.5	0.5	0.7	0.7	0.6	0.5	0.3	0.6	1.0	1.2	1.3
Foreign	2.0	2.1	3.0	4.3	5.2	5.3	5.0	5.3	5.6	6.0	6.8	7.1
Total	100.0	100.0	100.0	100.0	100.0	100.0	100.0	100.0	100.0	100.0	100.0	100.0