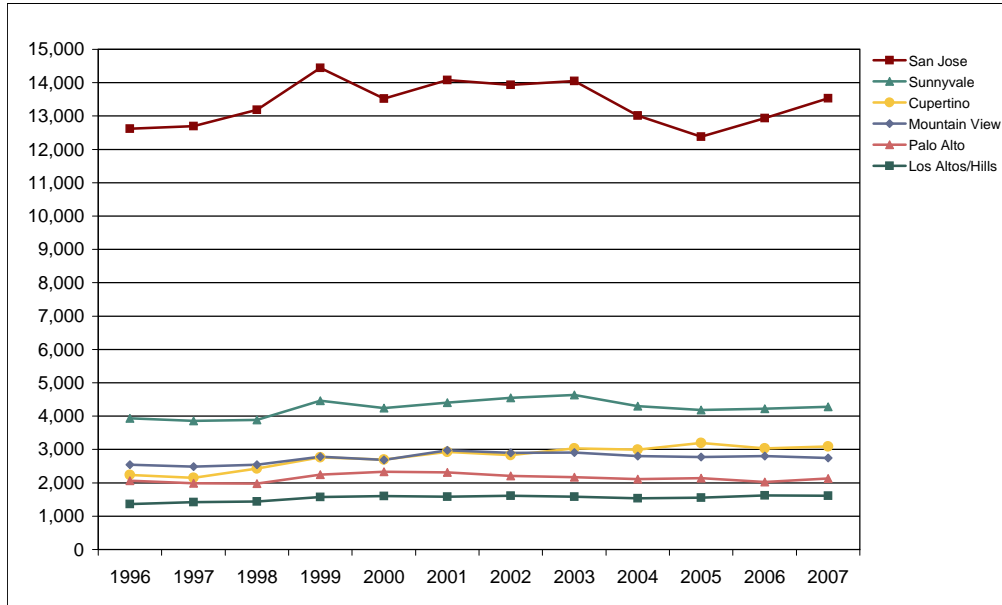


Foothill-De Anza Community College District

Fall End-of-Term Headcount Frequency Distribution by City of Residence



Fall End-of-Term Headcount Frequency Distribution by City of Residence

City of Residence	1996	1997	1998	1999	2000	2001	2002	2003	2004	2005	2006	2007
San Jose	12,620	12,693	13,188	14,448	13,526	14,075	13,938	14,046	13,009	12,380	12,941	13,534
Mountain View	2,541	2,482	2,544	2,783	2,684	2,971	2,901	2,906	2,798	2,769	2,802	2,746
Palo Alto	2,064	1,991	1,975	2,245	2,336	2,312	2,204	2,165	2,110	2,141	2,028	2,129
Los Altos/Hills	1,366	1,417	1,436	1,575	1,598	1,583	1,610	1,586	1,535	1,551	1,619	1,609
Sunnyvale	3,935	3,858	3,888	4,458	4,238	4,408	4,551	4,633	4,303	4,189	4,220	4,281
Cupertino	2,234	2,149	2,424	2,761	2,700	2,924	2,827	3,034	2,998	3,197	3,037	3,089
Redwood City	766	767	746	893	903	914	853	870	765	756	727	654
Fremont	702	755	817	772	756	816	825	795	752	877	933	1,013
Menlo Park	679	623	663	713	693	704	713	722	698	658	591	584
Santa Clara	2,115	2,099	2,211	2,456	2,252	2,382	2,534	2,358	2,205	2,161	2,016	2,174
San Mateo	298	344	366	339	395	390	394	374	348	336	343	317
Saratoga	510	544	497	531	586	633	607	625	591	660	690	737
Milpitas	832	807	794	824	813	840	932	935	853	839	844	887
San Francisco	482	570	664	596	651	727	843	894	677	937	652	597
Campbell	860	859	896	873	819	844	873	803	724	739	759	790
East Palo Alto	191	189	221	262	261	290	278	279	300	238	277	272
Portola Valley	173	174	165	194	196	197	189	194	187	197	193	182
Los Gatos	512	520	503	485	490	496	444	486	459	485	521	494
San Carlos	222	192	194	200	220	229	239	196	207	219	215	188
Gilroy	139	175	177	223	202	169	166	164	164	145	156	161
Millbrae	43	43	53	53	55	62	63	56	66	82	79	70
Others	5,254	6,003	6,236	4,361	5,256	5,825	6,676	5,387	4,934	5,312	6,215	6,418
Total	38,538	39,254	40,658	42,045	41,630	43,791	44,660	43,508	40,683	40,868	41,858	42,926

Fall End-of-Term Headcount Percentage Distribution by City of Residence

City of Residence	1996	1997	1998	1999	2000	2001	2002	2003	2004	2005	2006	2007
San Jose	32.7	32.3	32.4	34.4	32.5	32.1	31.2	32.3	32.0	30.3	30.9	31.5
Mountain View	6.6	6.3	6.3	6.6	6.4	6.8	6.5	6.7	6.9	6.8	6.7	6.4
Palo Alto	5.4	5.1	4.9	5.3	5.6	5.3	4.9	5.0	5.2	5.2	4.8	5.0
Los Altos/Hills	3.5	3.6	3.5	3.7	3.8	3.6	3.6	3.6	3.8	3.8	3.9	3.7
Sunnyvale	10.2	9.8	9.6	10.6	10.2	10.1	10.2	10.6	10.6	10.3	10.1	10.0
Cupertino	5.8	5.5	6.0	6.6	6.5	6.7	6.3	7.0	7.4	7.8	7.3	7.2
Redwood City	2.0	2.0	1.8	2.1	2.2	2.1	1.9	2.0	1.9	1.8	1.7	1.5
Fremont	1.8	1.9	2.0	1.8	1.8	1.9	1.8	1.8	1.8	2.1	2.2	2.4
Menlo Park	1.8	1.6	1.6	1.7	1.7	1.6	1.6	1.7	1.7	1.6	1.4	1.4
Santa Clara	5.5	5.3	5.4	5.8	5.4	5.4	5.7	5.4	5.4	5.3	4.8	5.1
San Mateo	0.8	0.9	0.9	0.8	0.9	0.9	0.9	0.9	0.9	0.8	0.8	0.7
Saratoga	1.3	1.4	1.2	1.3	1.4	1.4	1.4	1.4	1.5	1.6	1.6	1.7
Milpitas	2.2	2.1	2.0	2.0	2.0	1.9	2.1	2.1	2.1	2.1	2.0	2.1
Campbell	2.2	2.2	2.2	2.1	2.0	1.9	2.0	1.8	1.8	1.8	1.8	1.8
East Palo Alto	0.5	0.5	0.5	0.6	0.6	0.7	0.6	0.6	0.7	0.6	0.7	0.6
Los Gatos	1.3	1.3	1.2	1.2	1.2	1.1	1.0	1.1	1.1	1.2	1.2	1.2
Others	100.0	100.0	100.0	100.0	100.0	100.0	100.0	100.0	100.0	100.0	100.0	100.0