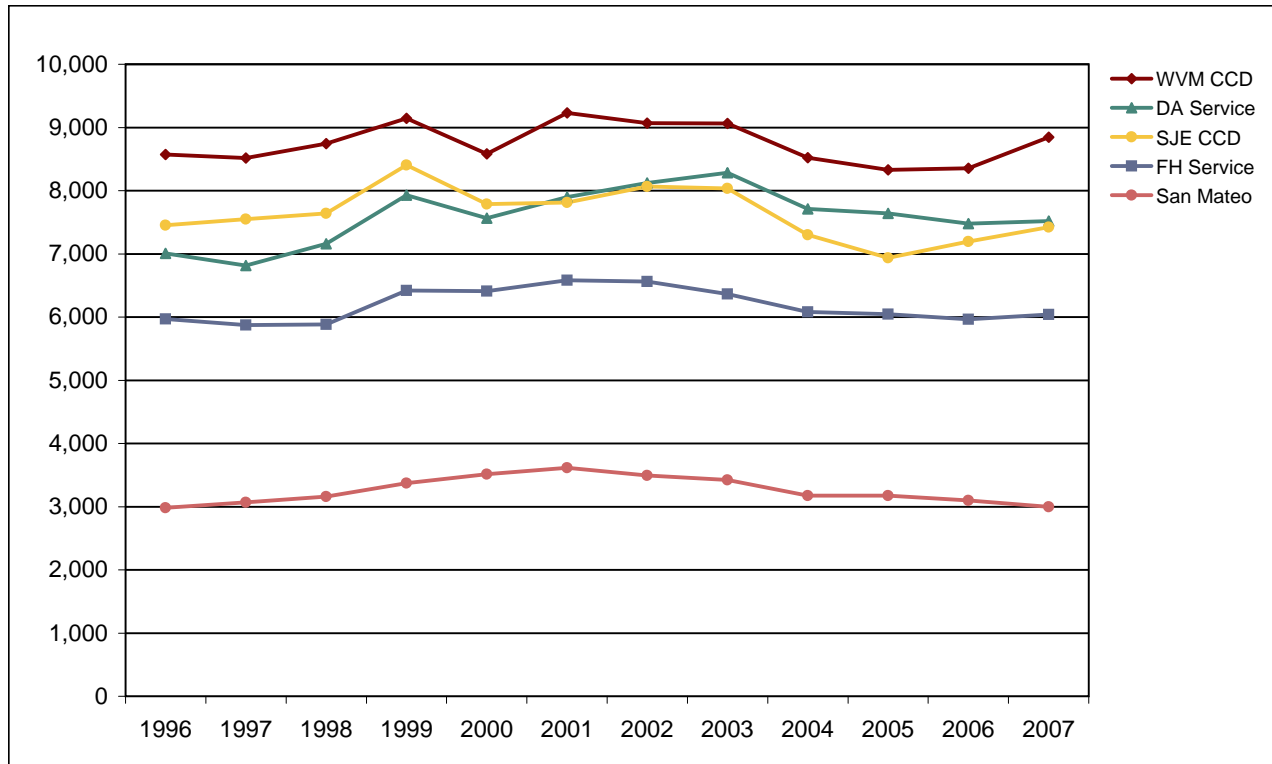


Foothill-De Anza Community College District

Fall End-of-Term Headcount Frequency Distribution by District of Residence



Fall End-of-Term Headcount Frequency Distribution by District of Residence

District of Residence	1996	1997	1998	1999	2000	2001	2002	2003	2004	2005	2006	2007
FH Service	5,971	5,873	5,883	6,422	6,411	6,581	6,563	6,364	6,082	6,044	5,966	6,043
DA Service	7,007	6,815	7,162	7,928	7,567	7,899	8,120	8,285	7,710	7,639	7,476	7,521
SJE CCD	7,455	7,550	7,639	8,406	7,787	7,813	8,066	8,036	7,303	6,938	7,197	7,424
WVM CCD	8,570	8,516	8,744	9,142	8,581	9,229	9,069	9,065	8,522	8,327	8,355	8,847
San Mateo CCD	2,983	3,066	3,160	3,374	3,512	3,617	3,493	3,423	3,173	3,177	3,100	2,995
Gavilan CCD	480	523	549	652	592	543	492	538	499	479	474	494
Other Calif	4,866	5,572	5,870	3,914	4,700	5,329	6,112	5,175	4,752	5,446	6,165	6,249
Out of State	256	254	283	350	333	339	384	306	410	557	632	703
Foreign	950	1,085	1,368	1,857	2,147	2,441	2,361	2,316	2,232	2,261	2,493	2,650
Total	38,538	39,254	40,658	42,045	41,630	43,791	44,660	43,508	40,683	40,868	41,858	42,926

Fall End-of-Term Headcount Percentage Distribution by District of Residence

District of Residence	1996	1997	1998	1999	2000	2001	2002	2003	2004	2005	2006	2007
FH Service	15.5	15.0	14.5	15.3	15.4	15.0	14.7	14.6	14.9	14.8	14.3	14.1
DA Service	18.2	17.4	17.6	18.9	18.2	18.0	18.2	19.0	19.0	18.7	17.9	17.5
SJE CCD	19.3	19.2	18.8	20.0	18.7	17.8	18.1	18.5	18.0	17.0	17.2	17.3
WVM CCD	22.2	21.7	21.5	21.7	20.6	21.1	20.3	20.8	20.9	20.4	20.0	20.6
San Mateo CCD	7.7	7.8	7.8	8.0	8.4	8.3	7.8	7.9	7.8	7.8	7.4	7.0
Gavilan CCD	1.2	1.3	1.4	1.6	1.4	1.2	1.1	1.2	1.2	1.2	1.1	1.2
Other Calif	12.6	14.2	14.4	9.3	11.3	12.2	13.7	11.9	11.7	13.3	14.7	14.6
Out of State	0.7	0.6	0.7	0.8	0.8	0.8	0.9	0.7	1.0	1.4	1.5	1.6
Foreign	2.5	2.8	3.4	4.4	5.2	5.6	5.3	5.3	5.5	5.5	6.0	6.2
Total	100.0	100.0	100.0	100.0	100.0	100.0	100.0	100.0	100.0	100.0	100.0	100.0