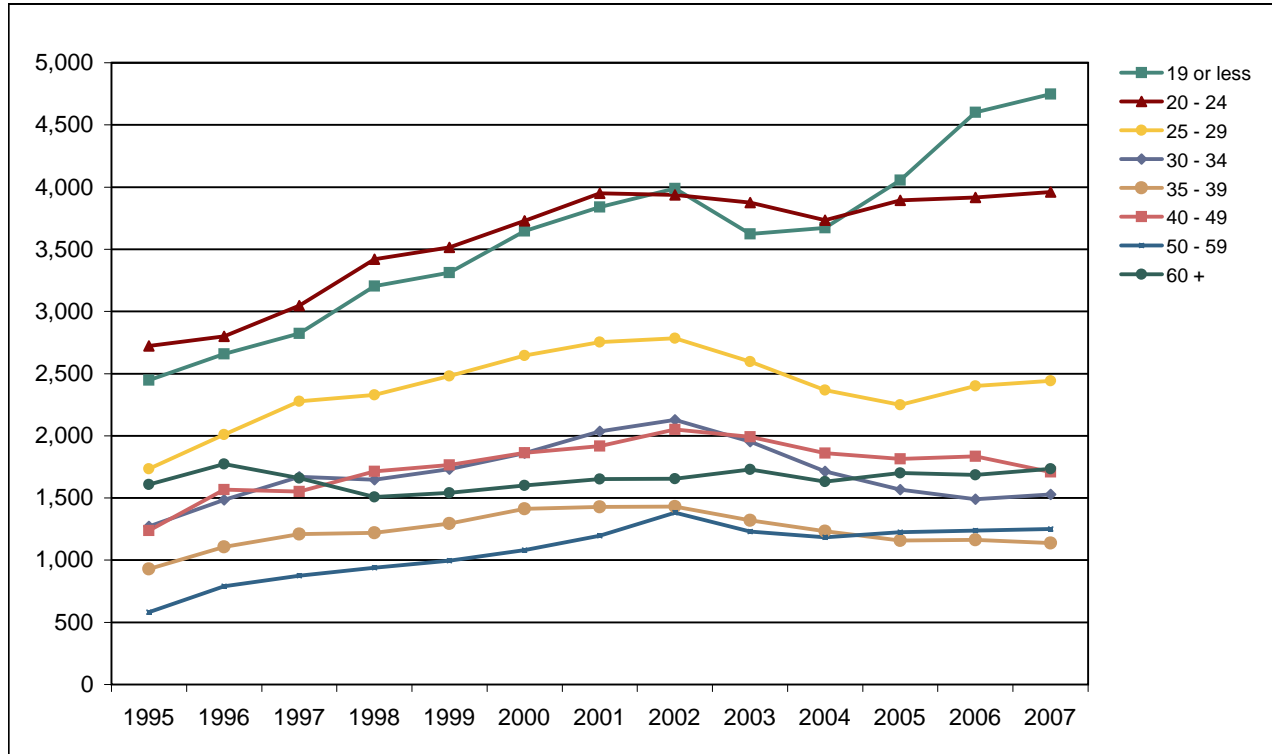


Foothill College

Fall End-of-Term Headcount Frequency Distribution by Age Range



Fall End-of-Term Headcount Frequency Distribution by Age Range

Age Range	1995	1996	1997	1998	1999	2000	2001	2002	2003	2004	2005	2006	2007
19 or less	2,447	2,658	2,822	3,204	3,313	3,647	3,840	3,989	3,623	3,673	4,055	4,600	4,748
20 - 24	2,723	2,800	3,048	3,421	3,514	3,729	3,950	3,938	3,875	3,735	3,893	3,917	3,961
25 - 29	1,734	2,009	2,278	2,328	2,481	2,646	2,753	2,785	2,596	2,367	2,248	2,402	2,442
30 - 34	1,272	1,484	1,670	1,647	1,732	1,861	2,035	2,128	1,954	1,713	1,567	1,490	1,529
35 - 39	930	1,107	1,209	1,220	1,294	1,413	1,429	1,431	1,321	1,233	1,158	1,164	1,138
40 - 49	1,237	1,568	1,551	1,715	1,766	1,862	1,917	2,050	1,993	1,860	1,815	1,835	1,708
50 - 59	582	791	874	938	996	1,080	1,196	1,383	1,231	1,184	1,224	1,237	1,250
60 +	1,609	1,772	1,659	1,508	1,541	1,600	1,652	1,655	1,730	1,631	1,702	1,685	1,735
Unrecorded	71	102	67	37	38	45	32	6	3	10	15	12	11
Total	12,605	14,291	15,178	16,018	16,675	17,883	18,804	19,365	18,326	17,406	17,677	18,342	18,522

Fall End-of-Term Headcount Percentage Distribution by Age Range

Age Range	1995	1996	1997	1998	1999	2000	2001	2002	2003	2004	2005	2006	2007
19 or less	19.4	18.6	18.6	20.0	19.9	20.4	20.4	20.6	19.8	21.1	22.9	25.1	25.6
20 - 24	21.6	19.6	20.1	21.4	21.1	20.9	21.0	20.3	21.1	21.5	22.0	21.4	21.4
25 - 29	13.8	14.1	15.0	14.5	14.9	14.8	14.6	14.4	14.2	13.6	12.7	13.1	13.2
30 - 34	10.1	10.4	11.0	10.3	10.4	10.4	10.8	11.0	10.7	9.8	8.9	8.1	8.3
35 - 39	7.4	7.7	8.0	7.6	7.8	7.9	7.6	7.4	7.2	7.1	6.6	6.3	6.1
40 - 49	9.8	11.0	10.2	10.7	10.6	10.4	10.2	10.6	10.9	10.7	10.3	10.0	9.2
50 - 59	4.6	5.5	5.8	5.9	6.0	6.0	6.4	7.1	6.7	6.8	6.9	6.7	6.7
60 +	12.8	12.4	10.9	9.4	9.2	8.9	8.8	8.5	9.4	9.4	9.6	9.2	9.4
Unrecorded	0.6	0.7	0.4	0.2	0.2	0.3	0.2	0.0	0.0	0.1	0.1	0.1	0.1
Total	100.0	100.0	100.0	100.0	100.0	100.0	100.0	100.0	100.0	100.0	100.0	100.0	100.0

FHDA IR&P - 2/3/06; 1994 & 1995 added 5/3/06; 2/7/07; 2/25/08