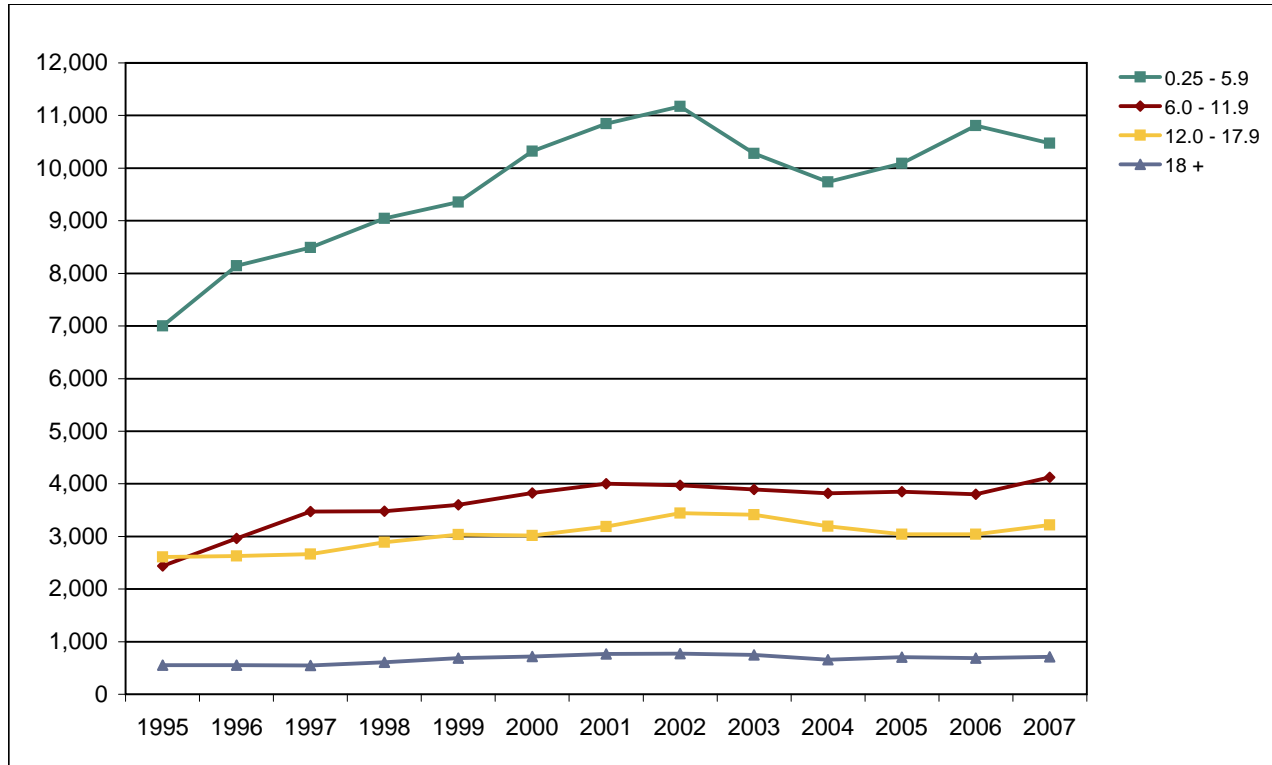


Foothill College

Fall End-of-Term Headcount Frequency Distribution by Attempted Units



Fall End-of-Term Headcount Frequency Distribution by Attempted Units

Attempted Uni	1995	1996	1997	1998	1999	2000	2001	2002	2003	2004	2005	2006	2007
0.25 - 2.9	3,451	4,203	4,121	4,086	4,106	4,678	4,977	5,137	4,481	4,109	4,715	4,914	4,915
3.0 - 5.9	3,551	3,942	4,372	4,956	5,246	5,646	5,868	6,037	5,798	5,627	5,373	5,896	5,561
6.0 - 8.9	1,080	1,175	1,247	1,363	1,427	1,461	1,402	1,370	1,384	1,342	1,426	1,358	1,660
9.0 - 11.9	1,358	1,790	2,228	2,118	2,171	2,362	2,598	2,604	2,507	2,476	2,421	2,444	2,461
12.0 - 14.9	1,546	1,535	1,564	1,619	1,678	1,679	1,794	1,919	1,976	1,857	1,793	1,861	2,004
15.0 - 17.9	1,065	1,095	1,101	1,269	1,360	1,337	1,396	1,524	1,434	1,337	1,246	1,182	1,211
18.0 - 20.9	478	490	494	541	595	622	659	679	657	579	577	560	571
21 +	76	61	51	66	92	98	110	95	89	79	126	127	139
Total	12,605	14,291	15,178	16,018	16,675	17,883	18,804	19,365	18,326	17,406	17,677	18,342	18,522

Fall End-of-Term Headcount Percentage Distribution by Attempted Units

Attempted Uni	1995	1996	1997	1998	1999	2000	2001	2002	2003	2004	2005	2006	2007
0.25 - 2.9	27.4	29.4	27.2	25.5	24.6	26.2	26.5	26.5	24.5	23.6	26.7	26.8	26.5
3.0 - 5.9	28.2	27.6	28.8	30.9	31.5	31.6	31.2	31.2	31.6	32.3	30.4	32.1	30.0
6.0 - 8.9	8.6	8.2	8.2	8.5	8.6	8.2	7.5	7.1	7.6	7.7	8.1	7.4	9.0
9.0 - 11.9	10.8	12.5	14.7	13.2	13.0	13.2	13.8	13.4	13.7	14.2	13.7	13.3	13.3
12.0 - 14.9	12.3	10.7	10.3	10.1	10.1	9.4	9.5	9.9	10.8	10.7	10.1	10.1	10.8
15.0 - 17.9	8.4	7.7	7.3	7.9	8.2	7.5	7.4	7.9	7.8	7.7	7.0	6.4	6.5
18.0 - 20.9	3.8	3.4	3.3	3.4	3.6	3.5	3.5	3.5	3.6	3.3	3.3	3.1	3.1
21 +	0.6	0.4	0.3	0.4	0.6	0.5	0.6	0.5	0.5	0.5	0.7	0.7	0.8
Total	100.0	100.0	100.0	100.0	100.0	100.0	100.0	100.0	100.0	100.0	100.0	100.0	100.0

Note: Attempted Units is defined as all units for which a grade is recorded including "W" grades. Classes dropped before grades are required are included.

FHDA IR&P - 2/3/06; 1994 & 1995 added 5/3/06; 2/7/07; 2/25/08