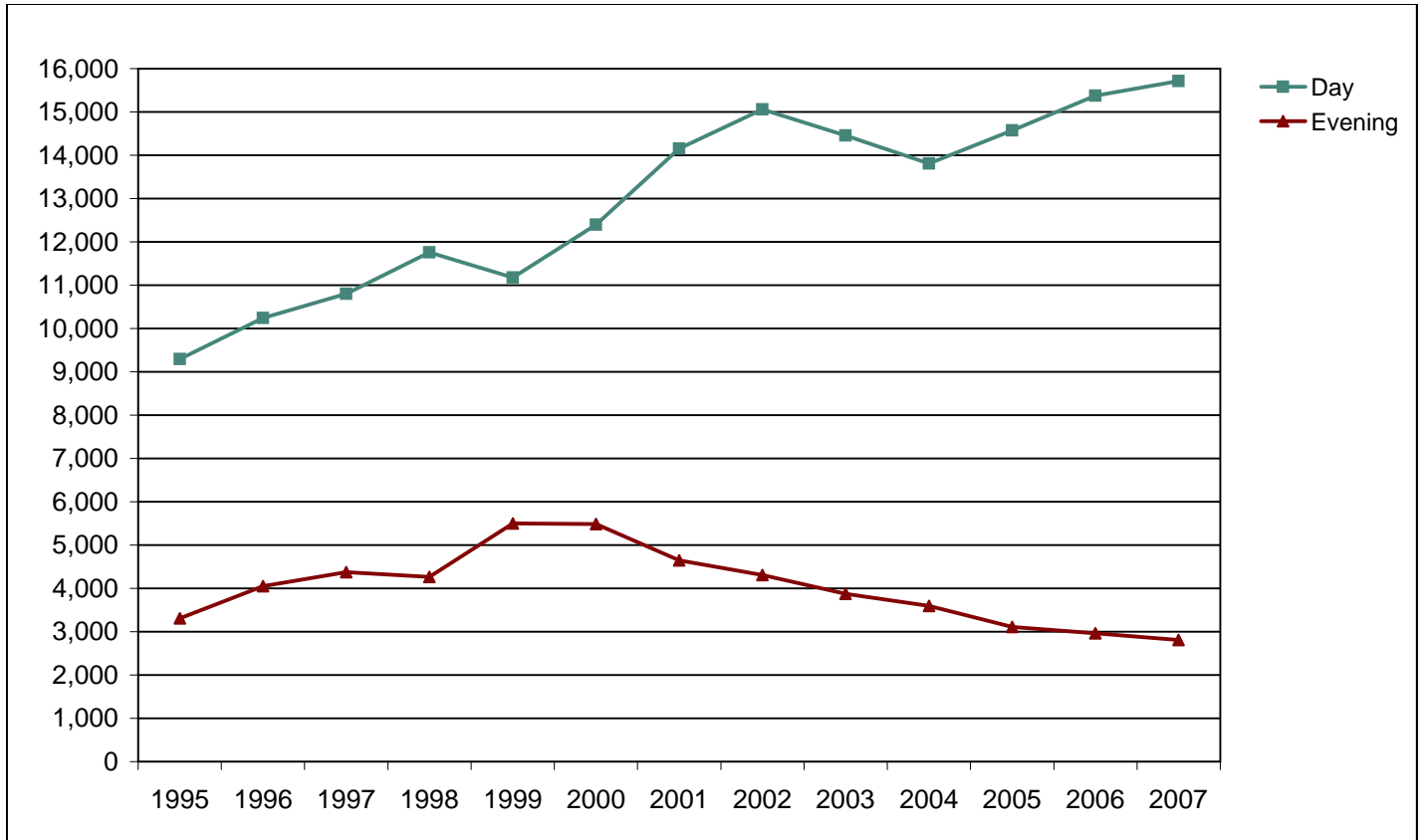




Foothill College

Fall End-of-Term Headcount Frequency Distribution by Day Evening Status



Fall End-of-Term Headcount Frequency Distribution by Day Evening Status

Day/Eve	1995	1996	1997	1998	1999	2000	2001	2002	2003	2004	2005	2006	2007
Day	9,297	10,239	10,801	11,755	11,177	12,400	14,156	15,058	14,454	13,807	14,570	15,376	15,716
Evening	3,308	4,052	4,377	4,263	5,498	5,483	4,648	4,307	3,872	3,599	3,107	2,966	2,806
Total	12,605	14,291	15,178	16,018	16,675	17,883	18,804	19,365	18,326	17,406	17,677	18,342	18,522

Fall End-of-Term Headcount Percentage Distribution by Day Evening Status

Day/Eve	1995	1996	1997	1998	1999	2000	2001	2002	2003	2004	2005	2006	2007
Day	73.8	71.6	71.2	73.4	67.0	69.3	75.3	77.8	78.9	79.3	82.4	83.8	84.9
Evening	26.2	28.4	28.8	26.6	33.0	30.7	24.7	22.2	21.1	20.7	17.6	16.2	15.1
Total	100.0	100.0	100.0	100.0	100.0	100.0	100.0	100.0	100.0	100.0	100.0	100.0	100.0

FHDA IR&P - 2/3/06; 1994 & 1995 added 5/3/06; 2/7/07; 2/25/08