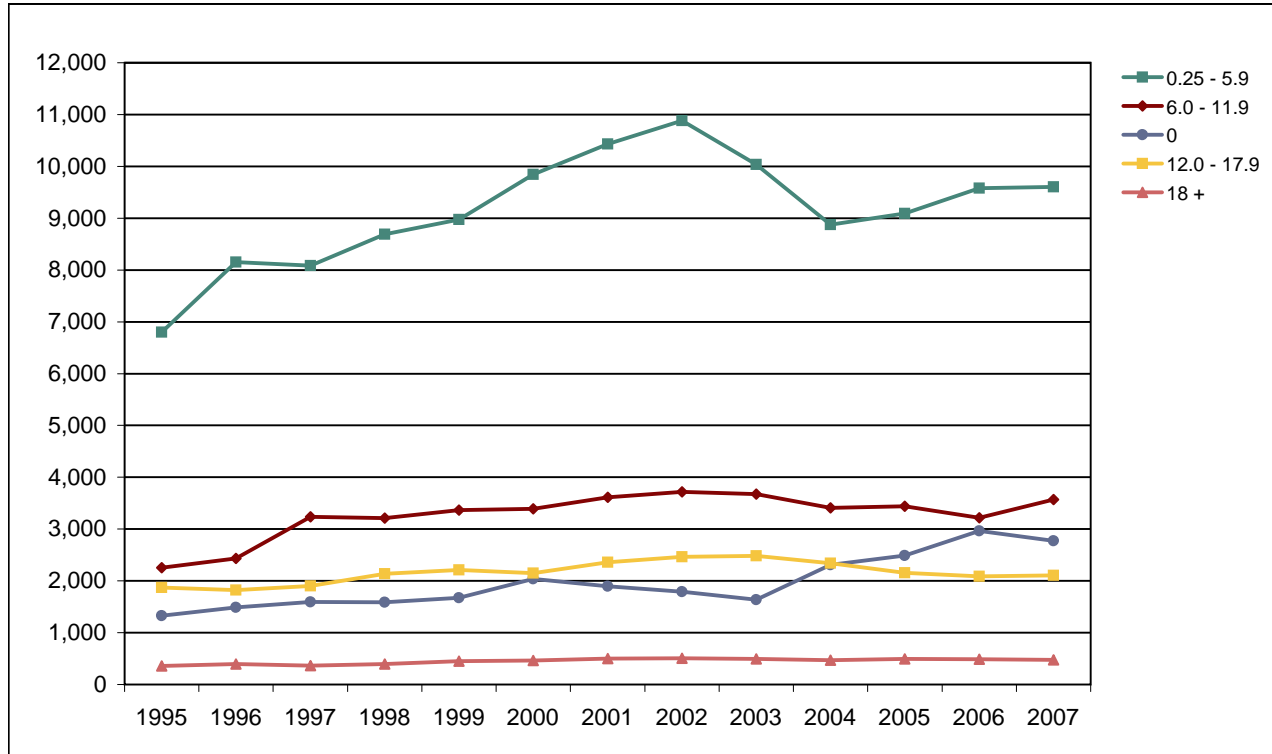


Foothill College

Fall End-of-Term Headcount Frequency Distribution by Earned Units



Fall End-of-Term Headcount Frequency Distribution by Earned Units

Earned Units	1995	1996	1997	1998	1999	2000	2001	2002	2003	2004	2005	2006	2007
0	1,325	1,489	1,591	1,588	1,676	2,036	1,896	1,790	1,638	2,312	2,489	2,964	2,770
0.25 - 2.9	3,468	4,207	4,142	4,055	4,132	4,628	4,992	5,088	4,442	4,044	4,413	4,691	4,556
3.0 - 5.9	3,330	3,944	3,942	4,635	4,844	5,217	5,441	5,795	5,594	4,829	4,681	4,891	5,045
6.0 - 8.9	1,041	1,109	1,212	1,296	1,381	1,323	1,317	1,353	1,401	1,491	1,368	1,400	1,391
9.0 - 11.9	1,211	1,327	2,022	1,916	1,982	2,068	2,297	2,367	2,272	1,920	2,073	1,819	2,179
12.0 - 14.9	1,143	1,140	1,160	1,226	1,279	1,193	1,350	1,408	1,464	1,390	1,267	1,237	1,238
15.0 - 17.9	731	681	742	909	930	956	1,010	1,059	1,021	951	891	852	866
18.0 - 20.9	314	357	332	351	394	396	430	454	436	411	392	384	363
21 +	42	37	35	42	57	66	71	51	58	58	103	104	114
Total	12,605	14,291	15,178	16,018	16,675	17,883	18,804	19,365	18,326	17,406	17,677	18,342	18,522

Fall End-of-Term Headcount Percentage Distribution by Earned Units

Earned Units	1995	1996	1997	1998	1999	2000	2001	2002	2003	2004	2005	2006	2007
0	10.5	10.4	10.5	9.9	10.1	11.4	10.1	9.2	8.9	13.3	14.1	16.2	15.0
0.25 - 2.9	27.5	29.4	27.3	25.3	24.8	25.9	26.5	26.3	24.2	23.2	25.0	25.6	24.6
3.0 - 5.9	26.4	27.6	26.0	28.9	29.0	29.2	28.9	29.9	30.5	27.7	26.5	26.7	27.2
6.0 - 8.9	8.3	7.8	8.0	8.1	8.3	7.4	7.0	7.0	7.6	8.6	7.7	7.6	7.5
9.0 - 11.9	9.6	9.3	13.3	12.0	11.9	11.6	12.2	12.2	12.4	11.0	11.7	9.9	11.8
12.0 - 14.9	9.1	8.0	7.6	7.7	7.7	6.7	7.2	7.3	8.0	8.0	7.2	6.7	6.7
15.0 - 17.9	5.8	4.8	4.9	5.7	5.6	5.3	5.4	5.5	5.6	5.5	5.0	4.6	4.7
18.0 - 20.9	2.5	2.5	2.2	2.2	2.4	2.2	2.3	2.3	2.4	2.4	2.2	2.1	2.0
21 +	0.3	0.3	0.2	0.3	0.3	0.4	0.4	0.3	0.3	0.3	0.6	0.6	0.6
Total	100.0	100.0	100.0	100.0	100.0	100.0	100.0	100.0	100.0	100.0	100.0	100.0	100.0

FHDA IR&P - 2/3/06; 1994 & 1995 added 5/3/06; 2/7/07; 2/25/08