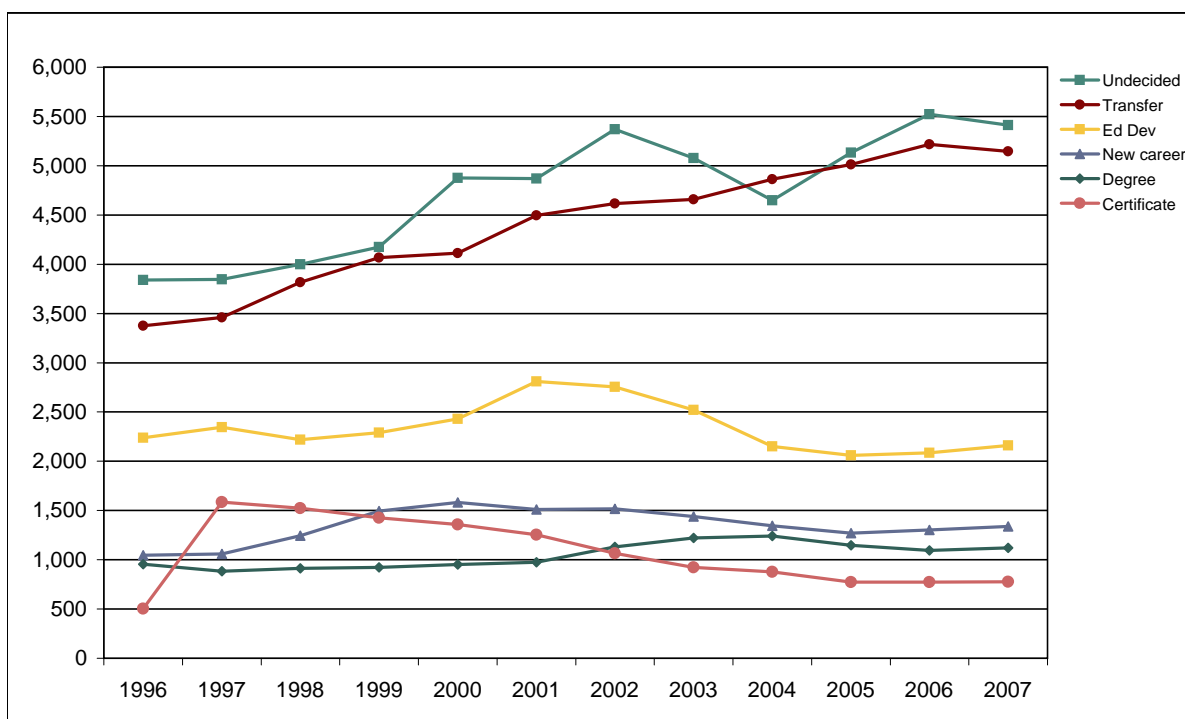


Foothill College

Fall End-of-Term Headcount Frequency Distribution by Educational Goal



Fall End-of-Term Headcount Frequency Distribution by Educational Goal

Educational Goal	1996	1997	1998	1999	2000	2001	2002	2003	2004	2005	2006	2007
Transfer after AA/AS	2,324	2,376	2,627	2,893	2,949	3,203	3,260	3,274	3,223	3,131	3,183	3,115
Transfer without AA/AS	1,051	1,083	1,191	1,175	1,162	1,293	1,356	1,385	1,641	1,881	2,035	2,031
AA/AS	429	420	426	474	500	523	592	724	871	886	833	893
Vocational Degree	527	464	486	449	452	453	537	496	370	262	261	227
Vocational Certificate	503	1,586	1,525	1,425	1,357	1,253	1,065	923	878	772	773	777
Formulate plans, goals	738	693	711	750	783	803	819	713	665	608	623	611
New career	1,047	1,059	1,245	1,493	1,583	1,511	1,518	1,439	1,344	1,271	1,304	1,339
Advance in job	931	743	925	965	1,180	1,286	1,261	1,078	1,007	1,023	1,190	1,087
Maintain certificate/licensx	164	149	180	159	142	162	209	228	211	208	191	165
Educational Development	2,237	2,345	2,220	2,290	2,429	2,811	2,756	2,521	2,151	2,060	2,087	2,160
Improve basic skills	209	193	207	208	217	257	241	198	170	156	143	129
Credit for HS or GED	216	167	204	156	180	172	188	171	144	133	131	132
Undecided	3,839	3,847	4,000	4,174	4,875	4,869	5,371	5,078	4,648	5,134	5,521	5,413
Unrecorded	76	53	71	64	74	208	192	98	83	152	67	443
Total	14,291	15,178	16,018	16,675	17,883	18,804	19,365	18,326	17,406	17,677	18,342	18,522

Fall End-of-Term Headcount Percentage Distribution by Educational Goal

Educational Goal	1996	1997	1998	1999	2000	2001	2002	2003	2004	2005	2006	2007
Transfer after AA/AS	16.3	15.7	16.4	17.3	16.5	17.0	16.8	17.9	18.5	17.7	17.4	16.8
Transfer without AA/AS	7.4	7.1	7.4	7.0	6.5	6.9	7.0	7.6	9.4	10.6	11.1	11.0
AA/AS	3.0	2.8	2.7	2.8	2.8	2.8	3.1	4.0	5.0	5.0	4.5	4.8
Vocational Degree	3.7	3.1	3.0	2.7	2.5	2.4	2.8	2.7	2.1	1.5	1.4	1.2
Vocational Certificate	3.5	10.4	9.5	8.5	7.6	6.7	5.5	5.0	5.0	4.4	4.2	4.2
Formulate plans, goals	5.2	4.6	4.4	4.5	4.4	4.3	4.2	3.9	3.8	3.4	3.4	3.3
New career	7.3	7.0	7.8	9.0	8.9	8.0	7.8	7.9	7.7	7.2	7.1	7.2
Advance in job	6.5	4.9	5.8	5.8	6.6	6.8	6.5	5.9	5.8	5.8	6.5	5.9
Maintain certificate/licensx	1.1	1.0	1.1	1.0	0.8	0.9	1.1	1.2	1.2	1.2	1.0	0.9
Educational Development	15.7	15.4	13.9	13.7	13.6	14.9	14.2	13.8	12.4	11.7	11.4	11.7
Improve basic skills	1.5	1.3	1.3	1.2	1.2	1.4	1.2	1.1	1.0	0.9	0.8	0.7
Credit for HS or GED	1.5	1.1	1.3	0.9	1.0	0.9	1.0	0.9	0.8	0.8	0.7	0.7
Undecided	26.9	25.3	25.0	25.0	27.3	25.9	27.7	27.7	26.7	29.0	30.1	29.2
Unrecorded	0.5	0.3	0.4	0.4	0.4	1.1	1.0	0.5	0.5	0.9	0.4	2.4
Total	100.0	100.0	100.0	100.0	100.0	100.0	100.0	100.0	100.0	100.0	100.0	100.0

FHDA IR&P - 2/3/06; 1994 & 1995 added 5/3/06; 2/7/07; 2/25/08