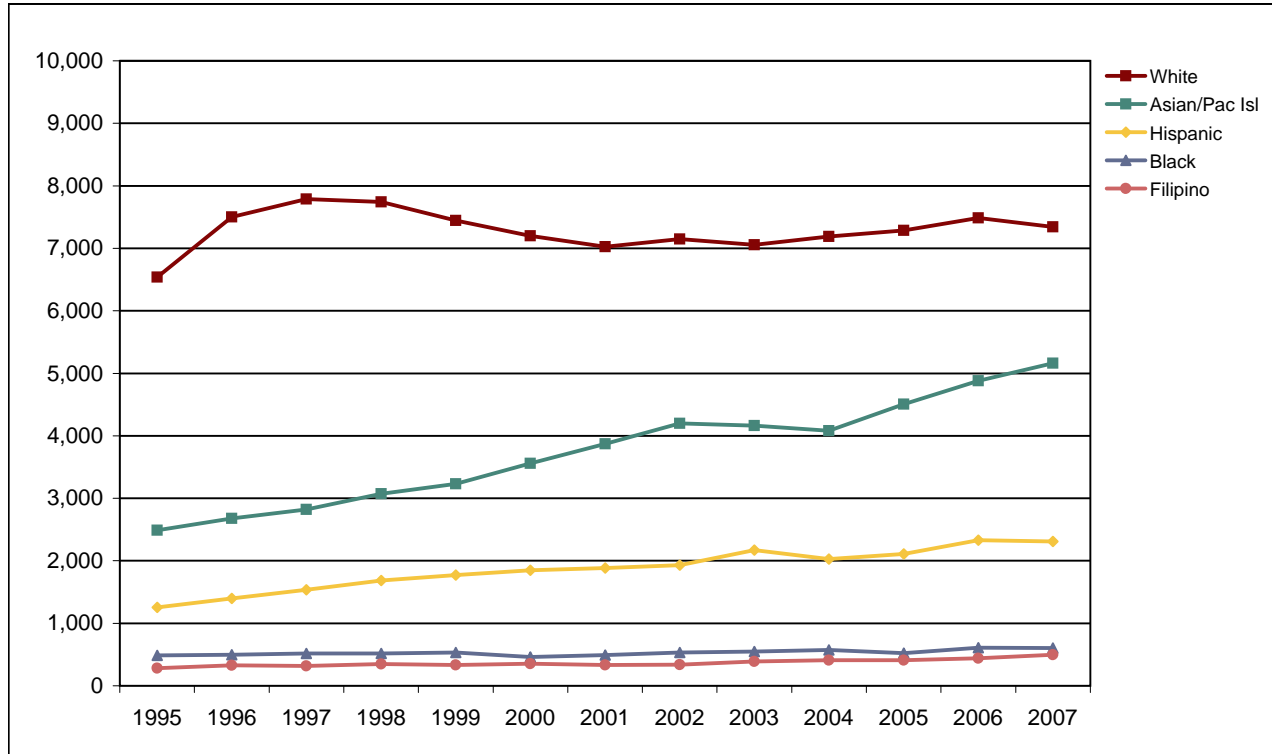


Foothill College

Fall End-of-Term Headcount Frequency Distribution by Ethnicity



Fall End-of-Term Headcount Frequency Distribution by Ethnicity

Ethnicity	1995	1996	1997	1998	1999	2000	2001	2002	2003	2004	2005	2006	2007
Asian	2,381	2,567	2,675	2,923	3,073	3,360	3,695	3,980	3,990	3,924	4,354	4,721	5,011
Black	485	496	516	516	531	461	489	533	550	575	523	611	605
Filipino	281	329	318	349	333	354	332	339	387	409	409	439	496
Hispanic	1,256	1,400	1,536	1,687	1,770	1,847	1,882	1,932	2,173	2,029	2,111	2,328	2,311
Native Am	92	105	117	128	111	109	93	95	94	77	73	69	80
Pacific Islander	107	113	146	150	160	198	176	218	175	159	152	161	152
White	6,537	7,502	7,787	7,741	7,444	7,197	7,023	7,146	7,054	7,190	7,288	7,484	7,345
Other	112	140	143	147	206	234	249	248	224	219	286	310	368
Unrecorded	1,354	1,639	1,940	2,377	3,047	4,123	4,865	4,874	3,679	2,824	2,481	2,219	2,154
Total	12,605	14,291	15,178	16,018	16,675	17,883	18,804	19,365	18,326	17,406	17,677	18,342	18,522

Fall End-of-Term Headcount Percentage Distribution by Ethnicity

Ethnicity	1995	1996	1997	1998	1999	2000	2001	2002	2003	2004	2005	2006	2007
Asian	18.9	18.0	17.6	18.2	18.4	18.8	19.7	20.6	21.8	22.5	24.6	25.7	27.1
Black	3.8	3.5	3.4	3.2	3.2	2.6	2.6	2.8	3.0	3.3	3.0	3.3	3.3
Filipino	2.2	2.3	2.1	2.2	2.0	2.0	1.8	1.8	2.1	2.3	2.3	2.4	2.7
Hispanic	10.0	9.8	10.1	10.5	10.6	10.3	10.0	10.0	11.9	11.7	11.9	12.7	12.5
Native Am	0.7	0.7	0.8	0.8	0.7	0.6	0.5	0.5	0.5	0.4	0.4	0.4	0.4
Pacific Islander	0.8	0.8	1.0	0.9	1.0	1.1	0.9	1.1	1.0	0.9	0.9	0.9	0.8
White	51.9	52.5	51.3	48.3	44.6	40.2	37.3	36.9	38.5	41.3	41.2	40.8	39.7
Other	0.9	1.0	0.9	0.9	1.2	1.3	1.3	1.3	1.2	1.3	1.6	1.7	2.0
Unrecorded	10.7	11.5	12.8	14.8	18.3	23.1	25.9	25.2	20.1	16.2	14.0	12.1	11.6
Total	100.0	100.0	100.0	100.0	100.0	100.0	100.0	100.0	100.0	100.0	100.0	100.0	100.0

FHDA IR&P - 2/3/06; 1994 & 1995 added 5/3/06; 2/7/07; 2/25/08