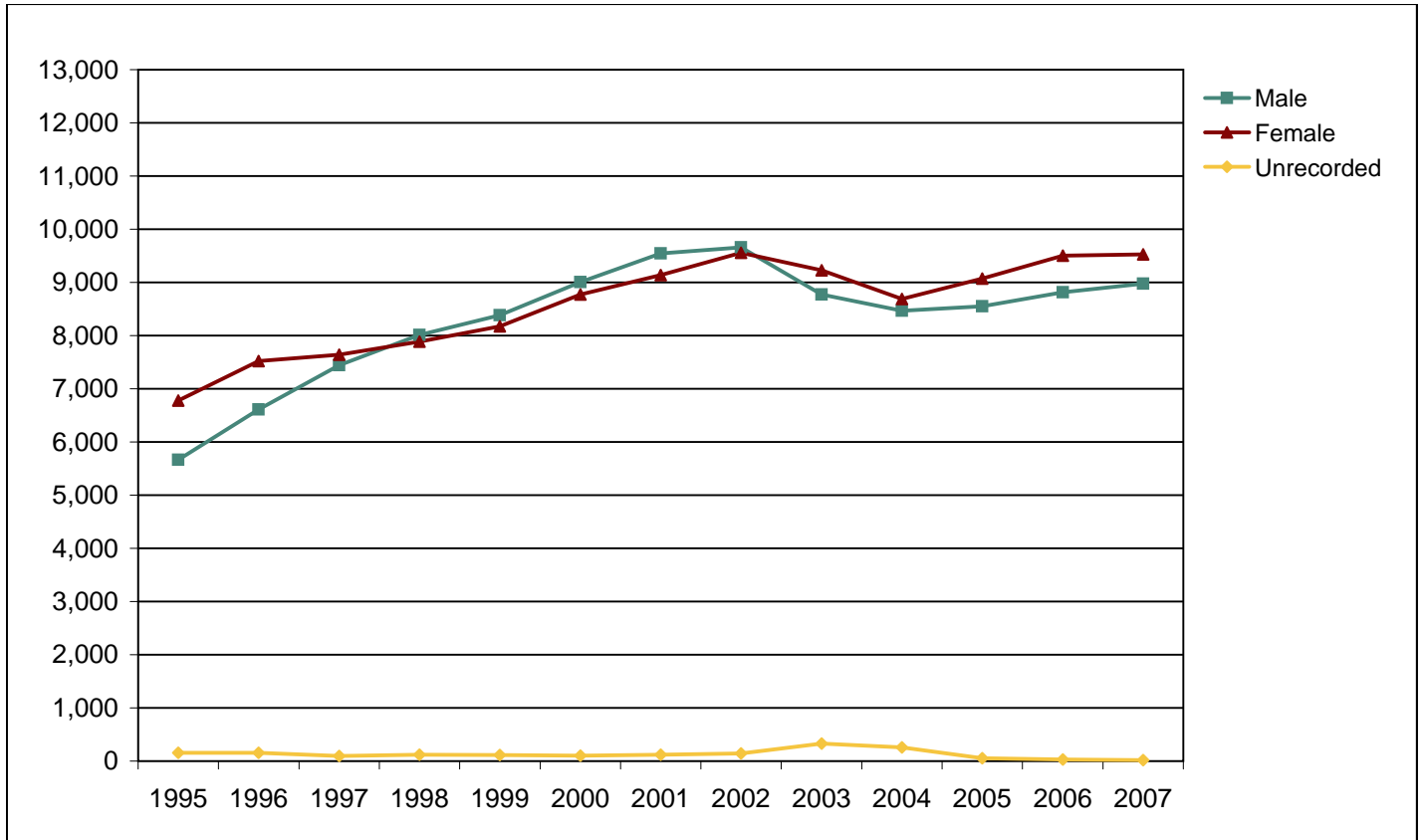




Foothill College

Fall End-of-Term Headcount Frequency Distribution by Gender



Fall End-of-Term Headcount Frequency Distribution by Gender

Gender	1995	1996	1997	1998	1999	2000	2001	2002	2003	2004	2005	2006	2007
Male	5,666	6,613	7,441	8,009	8,386	9,006	9,545	9,657	8,770	8,465	8,553	8,812	8,979
Female	6,781	7,522	7,640	7,888	8,173	8,774	9,139	9,559	9,227	8,686	9,070	9,503	9,525
Unrecorded	158	156	97	121	116	103	120	146	329	255	54	27	18
Total	12,605	14,291	15,178	16,018	16,675	17,883	18,804	19,362	18,326	17,406	17,677	18,342	18,522

Fall End-of-Term Headcount Percentage Distribution by Gender

Gender	1995	1996	1997	1998	1999	2000	2001	2002	2003	2004	2005	2006	2007
Male	45.0	46.3	49.0	50.0	50.3	50.4	50.8	49.9	47.9	48.6	48.4	48.0	48.5
Female	53.8	52.6	50.3	49.2	49.0	49.1	48.6	49.4	50.3	49.9	51.3	51.8	51.4
Unrecorded	1.3	1.1	0.6	0.8	0.7	0.6	0.6	0.8	1.8	1.5	0.3	0.1	0.1
Total	100.0	100.0	100.0	100.0	100.0	100.0	100.0	100.0	100.0	100.0	100.0	100.0	100.0

FHDA IR&P - 2/3/06; 1994 & 1995 added 5/3/06; 2/7/07; 2/25/08