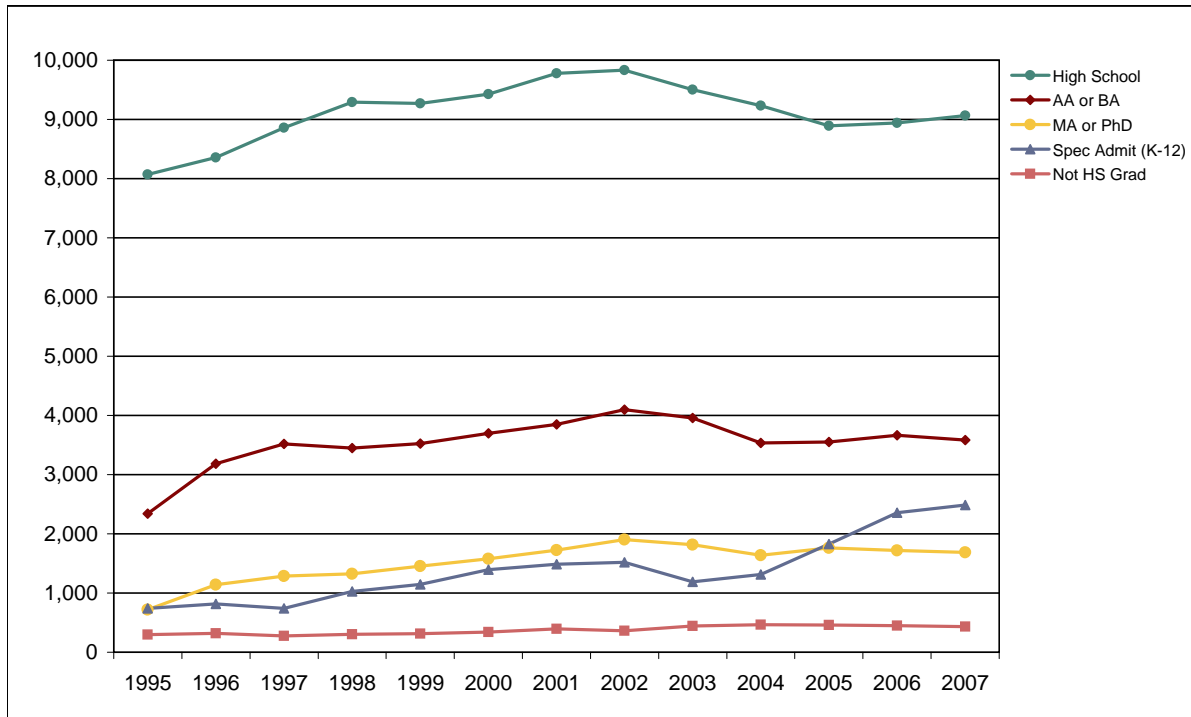


Foothill College

Fall End-of-Term Headcount Frequency Distribution by Highest Educational Level



Fall End-of-Term Headcount Frequency Distribution by Highest Educational Level

Highest Educa	1995	1996	1997	1998	1999	2000	2001	2002	2003	2004	2005	2006	2007
Not HS Grad	300	317	275	302	311	342	396	363	443	464	458	449	430
Spec Admit (K- Adult School	738	815	742	1,028	1,144	1,392	1,489	1,517	1,190	1,316	1,826	2,359	2,486
HS Diploma	6,544	6,794	7,205	7,541	7,499	7,429	7,581	7,640	7,351	7,141	6,899	6,910	7,041
Passed GED	475	533	604	682	639	787	960	1,047	1,006	787	557	517	504
CA Certificate	98	112	152	172	314	391	452	506	416	415	358	370	394
Foreign Secon	888	847	812	798	726	726	692	550	631	771	974	1,023	994
AA/AS	814	847	995	967	1,012	1,067	1,063	1,100	1,034	900	877	951	875
BA/BS	1,524	2,335	2,526	2,483	2,515	2,630	2,783	2,996	2,924	2,635	2,677	2,714	2,707
MA/MS	552	919	1,038	1,091	1,223	1,323	1,480	1,669	1,597	1,441	1,553	1,497	1,453
Doctorate	166	222	248	232	232	256	244	233	217	195	207	223	234
Foreign Degree	264	291	321	442	731	967	1,054	1,150	1,145	947	844	830	851
Unrecorded	178	189	175	180	239	479	514	507	272	277	342	376	423
Total	12,605	14,291	15,178	16,018	16,675	17,883	18,804	19,365	18,326	17,406	17,677	18,342	18,522

Fall End-of-Term Headcount Percentage Distribution by Highest Educational Level

Highest Educa	1995	1996	1997	1998	1999	2000	2001	2002	2003	2004	2005	2006	2007
Not HS Grad	2.4	2.2	1.8	1.9	1.9	1.9	2.1	1.9	2.4	2.7	2.6	2.4	2.3
Spec Admit (K- Adult School	5.9	5.7	4.9	6.4	6.9	7.8	7.9	7.8	6.5	7.6	10.3	12.9	13.4
HS Diploma	51.9	47.5	47.5	47.1	45.0	41.5	40.3	39.5	40.1	41.0	39.0	37.7	38.0
Passed GED	3.8	3.7	4.0	4.3	3.8	4.4	5.1	5.4	5.5	4.5	3.2	2.8	2.7
CA Certificate	0.8	0.8	1.0	1.1	1.9	2.2	2.4	2.6	2.3	2.4	2.0	2.0	2.1
Foreign Secon	7.0	5.9	5.3	5.0	4.4	4.1	3.7	2.8	3.4	4.4	5.5	5.6	5.4
AA/AS	6.5	5.9	6.6	6.0	6.1	6.0	5.7	5.7	5.6	5.2	5.0	5.2	4.7
BA/BS	12.1	16.3	16.6	15.5	15.1	14.7	14.8	15.5	16.0	15.1	15.1	14.8	14.6
MA/MS	4.4	6.4	6.8	6.8	7.3	7.4	7.9	8.6	8.7	8.3	8.8	8.2	7.8
Doctorate	1.3	1.6	1.6	1.4	1.4	1.4	1.3	1.2	1.2	1.1	1.2	1.2	1.3
Foreign Degree	2.1	2.0	2.1	2.8	4.4	5.4	5.6	5.9	6.2	5.4	4.8	4.5	4.6
Unrecorded	1.4	1.3	1.2	1.1	1.4	2.7	2.7	2.6	1.5	1.6	1.9	2.0	2.3
Total	100.0	100.0	100.0	100.0	100.0	100.0	100.0	100.0	100.0	100.0	100.0	100.0	100.0

FHDA IR&P - 2/3/06; 1994 & 1995 added 5/3/06; 2/7/07; 2/25/08