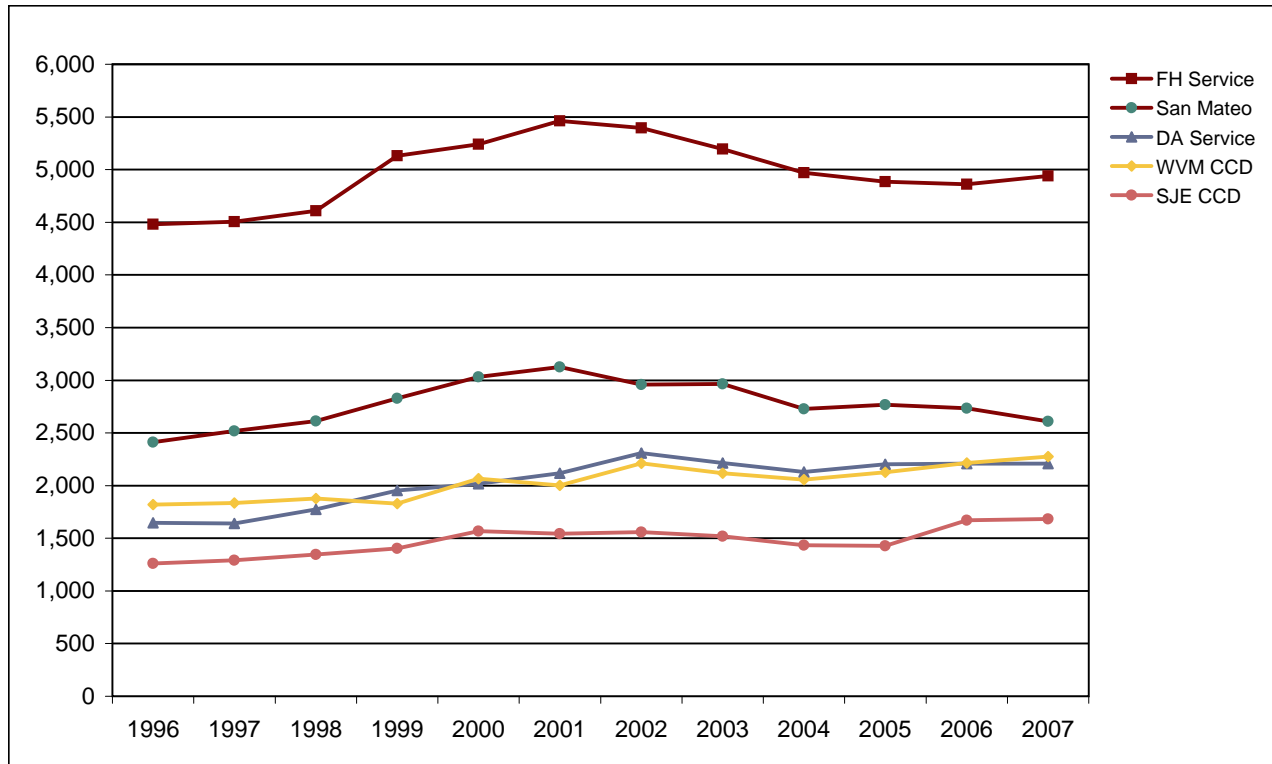


Foothill College

Fall End-of-Term Headcount Frequency Distribution by District of Residence



Fall End-of-Term Headcount Frequency Distribution by District of Residence

District of Residence	1996	1997	1998	1999	2000	2001	2002	2003	2004	2005	2006	2007
FH Service	4,481	4,506	4,609	5,132	5,240	5,461	5,395	5,196	4,970	4,884	4,860	4,940
DA Service	1,646	1,640	1,775	1,954	2,016	2,116	2,308	2,215	2,131	2,204	2,208	2,208
SJE CCD	1,261	1,292	1,345	1,405	1,568	1,543	1,558	1,520	1,434	1,429	1,671	1,683
WVM CCD	1,819	1,835	1,878	1,828	2,065	2,002	2,211	2,118	2,056	2,126	2,216	2,275
San Mateo CCD	2,413	2,519	2,614	2,829	3,031	3,127	2,958	2,966	2,728	2,767	2,733	2,609
Gavilan CCD	114	148	170	165	187	204	177	203	192	193	205	215
Other Calif	1,940	2,520	2,849	2,427	2,699	3,061	3,389	2,889	2,708	2,876	3,198	3,274
Out of State	150	140	153	167	173	182	253	228	261	336	356	392
Foreign	465	578	619	768	904	1,108	1,104	991	926	862	895	926
Total	14,289	15,178	16,012	16,675	17,883	18,804	19,353	18,326	17,406	17,677	18,342	18,522

Fall End-of-Term Headcount Percentage Distribution by District of Residence

District of Residence	1996	1997	1998	1999	2000	2001	2002	2003	2004	2005	2006	2007
FH Service	31.4	29.7	28.8	30.8	29.3	29.0	27.9	28.4	28.6	27.6	26.5	26.7
DA Service	11.5	10.8	11.1	11.7	11.3	11.3	11.9	12.1	12.2	12.5	12.0	11.9
SJE CCD	8.8	8.5	8.4	8.4	8.8	8.2	8.1	8.3	8.2	8.1	9.1	9.1
WVM CCD	12.7	12.1	11.7	11.0	11.5	10.6	11.4	11.6	11.8	12.0	12.1	12.3
San Mateo CCD	16.9	16.6	16.3	17.0	16.9	16.6	15.3	16.2	15.7	15.7	14.9	14.1
Gavilan CCD	0.8	1.0	1.1	1.0	1.0	1.1	0.9	1.1	1.1	1.1	1.1	1.2
Other Calif	13.6	16.6	17.8	14.6	15.1	16.3	17.5	15.8	15.6	16.3	17.4	17.7
Out of State	1.0	0.9	1.0	1.0	1.0	1.0	1.3	1.2	1.5	1.9	1.9	2.1
Foreign	3.3	3.8	3.9	4.6	5.1	5.9	5.7	5.4	5.3	4.9	4.9	5.0
Total	100.0	100.0	100.0	100.0	100.0	100.0	100.0	100.0	100.0	100.0	100.0	100.0