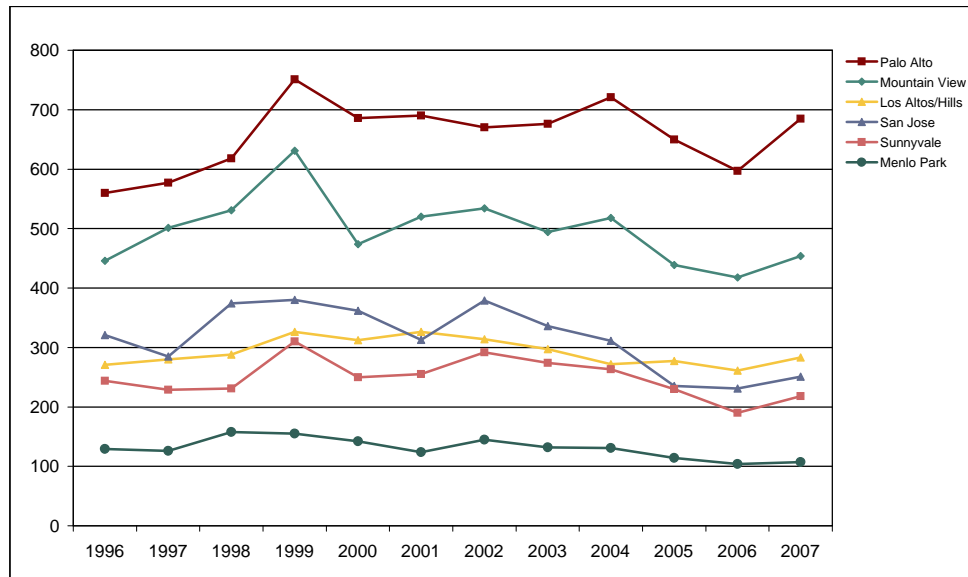


Middlefield Campus of Foothill College

Fall End-of-Term Headcount Frequency Distribution by City of Residence



Fall End-of-Term Headcount Frequency Distribution by City of Residence

City of Residence	1996	1997	1998	1999	2000	2001	2002	2003	2004	2005	2006	2007
Palo Alto	560	577	618	751	686	690	670	676	721	650	597	685
Mountain View	446	501	531	631	474	520	534	494	518	439	418	454
Los Altos/Hills	271	280	288	326	312	326	314	297	272	277	261	283
San Jose	321	285	374	380	362	313	379	336	311	235	231	251
Sunnyvale	244	229	231	310	250	255	292	274	263	230	190	218
Menlo Park	129	126	158	155	142	124	145	132	131	114	104	107
Redwood City	108	102	131	142	137	146	141	127	126	105	84	89
Santa Clara	85	84	94	100	94	86	96	86	87	83	50	71
Cupertino	65	70	95	83	59	55	71	67	63	63	50	50
East Palo Alto	27	44	50	54	53	62	49	41	55	38	45	46
Portola Valley	29	24	18	23	20	29	28	28	33	42	25	35
Milpitas	27	25	32	34	28	37	27	31	32	27	14	25
Fremont	47	47	52	43	35	44	42	34	38	27	20	23
San Francisco	47	51	44	35	43	40	63	51	51	27	18	22
San Mateo	49	52	39	42	46	40	46	48	40	39	22	22
Campbell	25	32	42	29	22	19	29	25	18	18	14	20
San Carlos	27	32	30	31	27	33	35	29	49	27	18	18
Saratoga	16	15	21	21	12	13	15	20	15	18	10	18
Los Gatos	32	23	24	28	25	22	20	14	18	18	17	17
Millbrae	3	2	7	7	5	4		6	4	6	4	8
Gilroy	3	5	5	2	7	3	2	7	5	3	1	5
All Other Cities	333	381	421	301	309	293	334	281	249	216	212	219
Total	2,894	2,987	3,305	3,528	3,148	3,154	3,332	3,104	3,099	2,702	2,405	2,686

Fall End-of-Term Headcount Percentage Distribution by City of Residence

City of Residence	1996	1997	1998	1999	2000	2001	2002	2003	2004	2005	2006	2007
Palo Alto	19.4	19.3	18.7	21.3	21.8	21.9	20.1	21.8	23.3	24.1	24.8	25.5
Mountain View	15.4	16.8	16.1	17.9	15.1	16.5	16.0	15.9	16.7	16.2	17.4	16.9
Los Altos/Los Altos Hills	9.4	9.4	8.7	9.2	9.9	10.3	9.4	9.6	8.8	10.3	10.9	10.5
San Jose	11.1	9.5	11.3	10.8	11.5	9.9	11.4	10.8	10.0	8.7	9.6	9.3
Sunnyvale	8.4	7.7	7.0	8.8	7.9	8.1	8.8	8.8	8.5	8.5	7.9	8.1
Menlo Park	4.5	4.2	4.8	4.4	4.5	3.9	4.4	4.3	4.2	4.2	4.3	4.0
Redwood City	3.7	3.4	4.0	4.0	4.4	4.6	4.2	4.1	4.1	3.9	3.5	3.3
Santa Clara	2.9	2.8	2.8	2.8	3.0	2.7	2.9	2.8	2.8	3.1	2.1	2.6
Cupertino	2.2	2.3	2.9	2.4	1.9	1.7	2.1	2.2	2.0	2.3	2.1	1.9
East Palo Alto	0.9	1.5	1.5	1.5	1.7	2.0	1.5	1.3	1.8	1.4	1.9	1.7
Portola Valley	1.0	0.8	0.5	0.7	0.6	0.9	0.8	0.9	1.1	1.6	1.0	1.3
Milpitas	0.9	0.8	1.0	1.0	0.9	1.2	0.8	1.0	1.0	1.0	0.6	0.9
Fremont	1.6	1.6	1.6	1.2	1.1	1.4	1.3	1.1	1.2	1.0	0.8	0.9
San Francisco	1.6	1.7	1.3	1.0	1.4	1.3	1.9	1.6	1.6	1.0	0.7	0.8
San Mateo	1.7	1.7	1.2	1.2	1.5	1.3	1.4	1.5	1.3	1.4	0.9	0.8
Campbell	0.9	1.1	1.3	0.8	0.7	0.6	0.9	0.8	0.6	0.7	0.6	0.7
San Carlos	0.9	1.1	0.9	0.9	0.9	1.0	1.1	0.9	1.6	1.0	0.7	0.7
Saratoga	0.6	0.5	0.6	0.6	0.4	0.4	0.5	0.6	0.5	0.7	0.4	0.7
Los Gatos	1.1	0.8	0.7	0.8	0.8	0.7	0.6	0.5	0.6	0.7	0.7	0.6
Millbrae	0.1	0.1	0.2	0.2	0.2	0.1	0.0	0.2	0.1	0.2	0.2	0.3
Gilroy	0.1	0.2	0.2	0.1	0.2	0.1	0.1	0.2	0.2	0.1	0.0	0.2
All Other Cities	11.5	12.8	12.7	8.5	9.8	9.3	10.0	9.1	8.0	8.0	8.8	8.2
Total	100.0	100.0	100.0	100.0	100.0	100.0	100.0	100.0	100.0	100.0	100.0	100.0