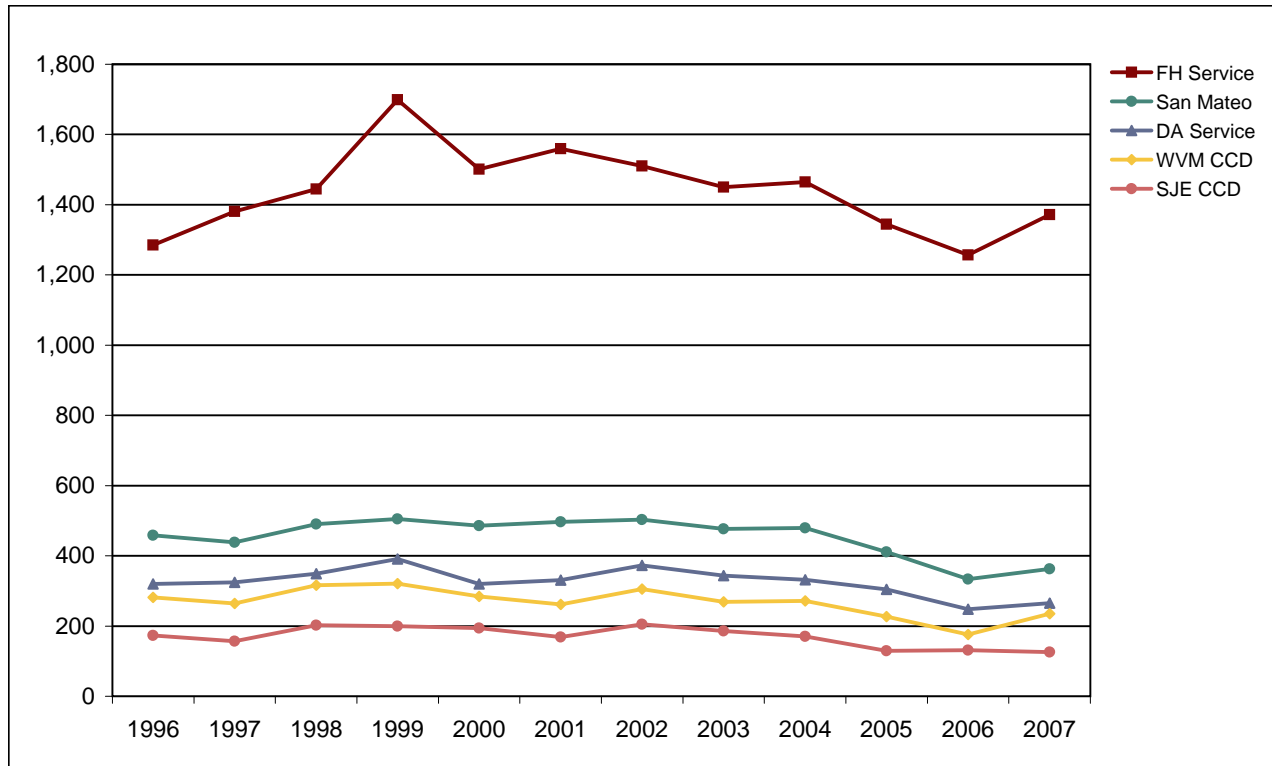


Middlefield Campus of Foothill College

Fall End-of-Term Headcount Frequency Distribution by District of Residence



Fall End-of-Term Headcount Frequency Distribution by District of Residence

District of Residence	1996	1997	1998	1999	2000	2001	2002	2003	2004	2005	2006	2007
FH Service	1,285	1,381	1,445	1,699	1,501	1,559	1,510	1,450	1,465	1,344	1,257	1,372
DA Service	320	324	349	391	320	331	373	344	332	304	248	265
SJE CCD	173	157	202	200	194	169	205	186	170	129	131	126
WVM CCD	282	264	316	321	284	262	305	269	272	227	176	235
San Mateo CCD	458	438	490	505	486	497	503	477	479	411	334	363
Gavilan CCD	10	10	14	7	15	11	9	13	10	7	7	9
Other Calif	263	313	338	223	204	215	269	201	188	145	140	133
Out of State	35	20	32	30	17	21	23	28	48	36	39	51
Foreign	68	80	119	152	127	89	135	136	135	99	73	132
Total	2,894	2,987	3,305	3,528	3,148	3,154	3,332	3,104	3,099	2,702	2,405	2,686

Fall End-of-Term Headcount Percentage Distribution by District of Residence

District of Residence	1996	1997	1998	1999	2000	2001	2002	2003	2004	2005	2006	2007
FH Service	44.4	46.2	43.7	48.2	47.7	49.4	45.3	46.7	47.3	49.7	52.3	51.1
DA Service	11.1	10.8	10.6	11.1	10.2	10.5	11.2	11.1	10.7	11.3	10.3	9.9
SJE CCD	6.0	5.3	6.1	5.7	6.2	5.4	6.2	6.0	5.5	4.8	5.4	4.7
WVM CCD	9.7	8.8	9.6	9.1	9.0	8.3	9.2	8.7	8.8	8.4	7.3	8.7
San Mateo CCD	15.8	14.7	14.8	14.3	15.4	15.8	15.1	15.4	15.5	15.2	13.9	13.5
Gavilan CCD	0.3	0.3	0.4	0.2	0.5	0.3	0.3	0.4	0.3	0.3	0.3	0.3
Other Calif	9.1	10.5	10.2	6.3	6.5	6.8	8.1	6.5	6.1	5.4	5.8	5.0
Out of State	1.2	0.7	1.0	0.9	0.5	0.7	0.7	0.9	1.5	1.3	1.6	1.9
Foreign	2.3	2.7	3.6	4.3	4.0	2.8	4.1	4.4	4.4	3.7	3.0	4.9
Total	100.0	100.0	100.0	100.0	100.0	100.0	100.0	100.0	100.0	100.0	100.0	100.0