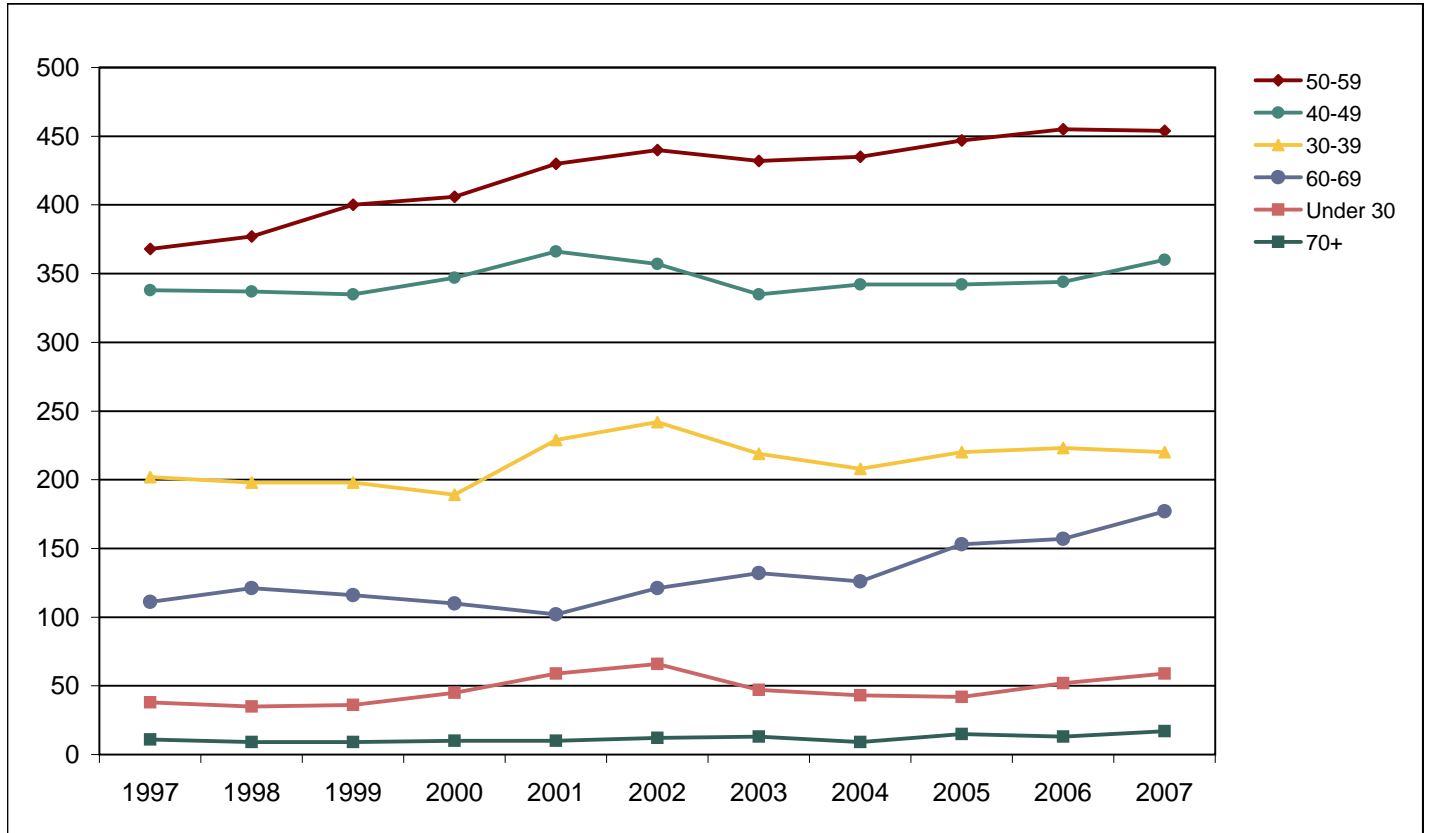




Foothill-De Anza Community College District

Fall Census Employee Headcount Frequency Distribution by Age Group



Fall Census Employee Headcount Frequency Distribution by Age Group

Age Range	1997	1998	1999	2000	2001	2002	2003	2004	2005	2006	2007
Under 30	38	35	36	45	59	66	47	43	42	52	59
30-39	202	198	198	189	229	242	219	208	220	223	220
40-49	338	337	335	347	366	357	335	342	342	344	360
50-59	368	377	400	406	430	440	432	435	447	455	454
60-69	111	121	116	110	102	121	132	126	153	157	177
70+	11	9	9	10	10	12	13	9	15	13	17
Total	1,068	1,077	1,094	1,107	1,196	1,238	1,178	1,163	1,219	1,244	1,287

Fall Census Employee Headcount Percentage Distribution by Age Group

Age Range	1997	1998	1999	2000	2001	2002	2003	2004	2005	2006	2007
Under 30	3.6	3.2	3.3	4.1	4.9	5.3	4.0	3.7	3.4	4.2	4.6
30-39	18.9	18.4	18.1	17.1	19.1	19.5	18.6	17.9	18.0	17.9	17.1
40-49	31.6	31.3	30.6	31.3	30.6	28.8	28.4	29.4	28.1	27.7	28.0
50-59	34.5	35.0	36.6	36.7	36.0	35.5	36.7	37.4	36.7	36.6	35.3
60-69	10.4	11.2	10.6	9.9	8.5	9.8	11.2	10.8	12.6	12.6	13.8
70+	1.0	0.8	0.8	0.9	0.8	1.0	1.1	0.8	1.2	1.0	1.3
Total	100.0	100.0	100.0	100.0	100.0	100.0	100.0	100.0	100.0	100.0	100.0