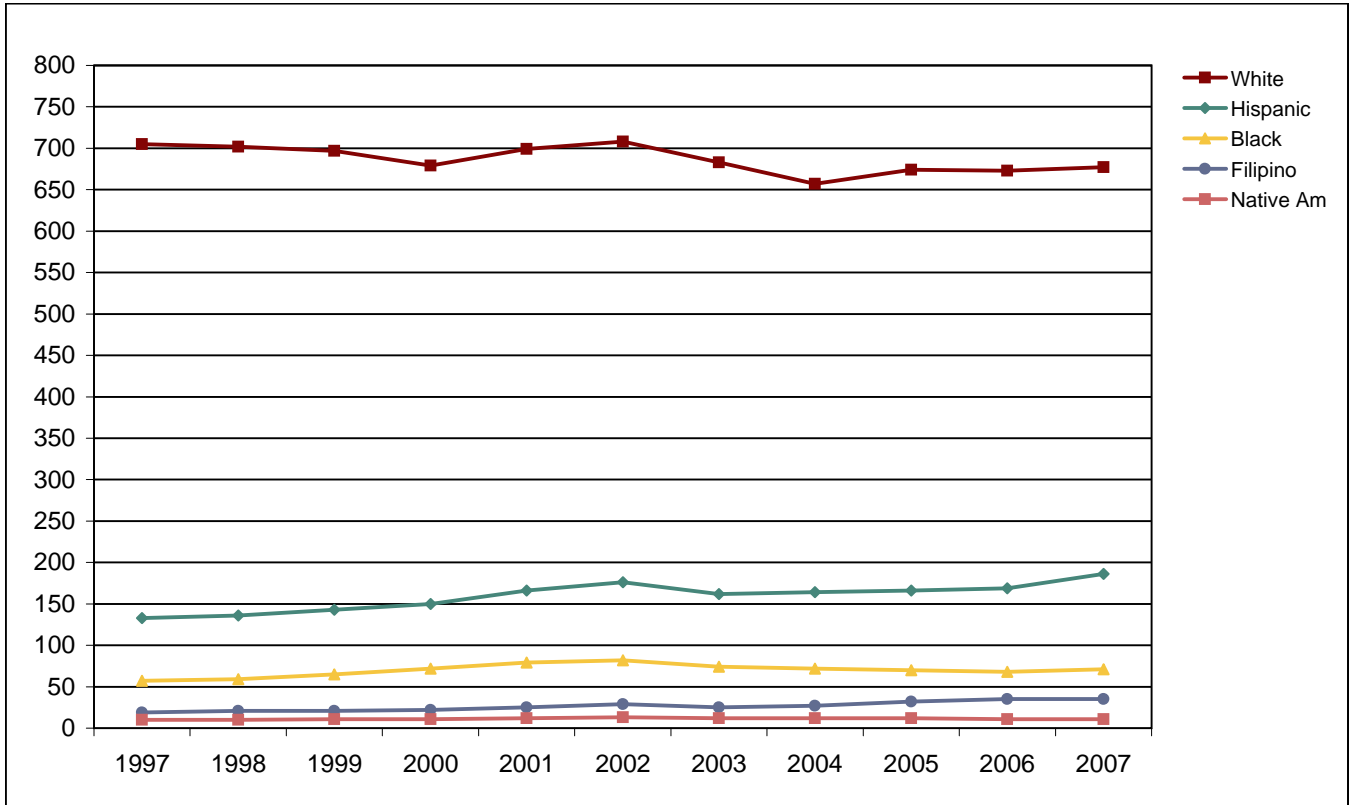


Foothill-De Anza Community College District

Fall Census Employee Headcount Frequency Distribution by Ethnicity



Fall Census Employee Headcount Frequency Distribution by Ethnicity

Ethnicity	1997	1998	1999	2000	2001	2002	2003	2004	2005	2006	2007
Asian/PI	108	113	113	126	149	160	161	162	181	191	205
Black	57	59	65	72	79	82	74	72	70	68	71
Filipino	19	21	21	22	25	29	25	27	32	35	35
Hispanic	133	136	143	150	166	176	162	164	166	169	186
Native Am	10	10	11	11	12	13	12	12	12	11	11
White	705	702	697	679	699	708	683	657	674	673	677
Unkwn	36	36	44	47	66	70	61	69	84	97	102
Total	1,068	1,077	1,094	1,107	1,196	1,238	1,178	1,163	1,219	1,244	1,287

Fall Census Employee Headcount Percentage Distribution by Ethnicity

Ethnicity	1997	1998	1999	2000	2001	2002	2003	2004	2005	2006	2007
Asian	10.1	10.5	10.3	11.4	12.5	12.9	13.7	13.9	14.8	15.4	15.9
Black	5.3	5.5	5.9	6.5	6.6	6.6	6.3	6.2	5.7	5.5	5.5
Filipino	1.8	1.9	1.9	2.0	2.1	2.3	2.1	2.3	2.6	2.8	2.7
Hispanic	12.5	12.6	13.1	13.6	13.9	14.2	13.8	14.1	13.6	13.6	14.5
Native Am	0.9	0.9	1.0	1.0	1.0	1.1	1.0	1.0	1.0	0.9	0.9
White	66.0	65.2	63.7	61.3	58.4	57.2	58.0	56.5	55.3	54.1	52.6
Unkwn	3.4	3.3	4.0	4.2	5.5	5.7	5.2	5.9	6.9	7.8	7.9
Total	100.0	100.0	100.0	100.0	100.0	100.0	100.0	100.0	100.0	100.0	100.0