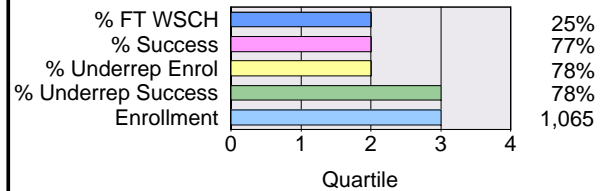


Foothill College Program Review

Anthropology

Dimension	Actual			Projections		
	2004-05	2005-06	2006-07	2007-08	2008-09	2009-10
Enrollment/Grades (Fiscal Year)	994	1,155	1,065	To be determined		
WSCH (Fiscal Year)	4,548	5,034	4,679			
Productivity (Fiscal Year)	532	486	487			
Retention % (Fiscal Year)	87%	88%	89%			
Success % (Fiscal Year)	78%	75%	77%			
Performance Indicator Quarile Rank and Value						
Classroom Teaching FTEF (Academic Yr)						
Full-time FTEF	0.00	0.00	1.00			
PT/Overload FTEF	2.25	2.65	1.60			
Total FTEF	2.25	2.65	2.60			
Percent Full-time	0%	0%	38%			
Reassigned FTEF	0.00	0.00	0.00			



Performance Indicator Definitions

- % FT WSCH: Percent of WSCH produced by 0 and 3 assignment types for Academic Year (Fall, Winter, and Spring quarters).
- Enrollment: Total duplicated enrollment for the Fiscal Year.
- % Success: Success rate for the Fiscal Year.
- % Underrep Enrollment: Percent of underrepresented (Asian, Black, Filipino, Hispanic, Native American, and Pacific Islander) student enrollment.
- % Underrep Success: Success rate of underrepresented students.

Success Rates, Fiscal Year 2006-07

Definitions

Dimension	Distribution		Non-			Percent		
	Count	Col %	Success	success	Withdraw	Percent Success	Non-success	Percent Withdraw
Ethnicity								
Asian	264	5	220	21	23	83	8	9
Black	42	1	27	7	7	66	17	17
Filipino	33	1	25	5	3	76	15	9
Hispanic	106	2	78	14	13	74	13	12
Native Am	4	0	3	1	0	75	25	0
Pac Islander	9	0	6	1	2	67	11	22
White	448	9	340	56	49	76	13	11
Other	34	1	26	8	0	76	24	0
Unrecorded	125	2	91	18	15	73	15	12
Total	1,065	21	816	131	112	77	12	11
Gender								
Female	641	13	508	65	66	79	10	10
Male	423	8	307	66	46	73	16	11
Unrecorded	1	0	1	0	0	100	0	0
Total	1,065	21	816	131	112	77	12	11
Age								
19 or less	322	6	258	34	26	81	11	8
20 - 24	454	9	327	67	58	72	15	13
25 - 29	108	2	75	20	13	69	19	12
30 - 34	59	1	46	7	6	78	12	10
35 - 39	47	1	44	0	3	94	0	6
40 - 49	48	1	41	3	4	85	6	8
50 +	27	1	25	0	2	93	0	7
Total	1,065	21	816	131	112	77	12	11

- Enrollment/Grades:** Sum of end-of-term grade count including Ws.
- WSCH:** Sum of quarterly End-of-Term Weekly Student Contact Hours.
- Retention %:** Number of students receiving a successful or non-successful grade / total number of students receiving a grade.
- Success %:** Number of students receiving an A,B,C or CR grade / total number of students receiving a grade.
- FTEF:** Sum of teaching load factors for Fall, Winter, and Spring quarters by assignment type, excluding reassignments.
- Productivity:** Four-term total WSCH / four-term total FTEF, excluding reassignments.
- Reassigned FTEF:** Sum of load in 994, 995, 998, and 999 courses.