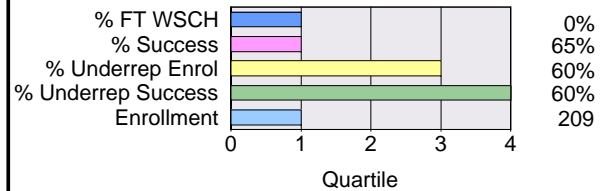


# Foothill College Program Review

# Women's Studies

Dimension	Actual			Projections		
	2004-05	2005-06	2006-07	2007-08	2008-09	2009-10
Enrollment/Grades (Fiscal Year)	255	221	209	To be determined		
WSCH (Fiscal Year)	1,212	1,048	1,033			
Productivity (Fiscal Year)	551	552	543			
Retention % (Fiscal Year)	79%	81%	75%			
Success % (Fiscal Year)	68%	69%	65%			
<b>Performance Indicator Quarile Rank and Value</b>						
<b>Classroom Teaching FTEF (Academic Yr)</b>						
Full-time FTEF	0.00	0.00	0.00			
PT/Overload FTEF	0.63	0.53	0.53			
Total FTEF	0.63	0.53	0.53			
Percent Full-time	0%	0%	0%			
Reassigned FTEF	0.00	0.00	0.00			



### Performance Indicator Definitions

- % FT WSCH: Percent of WSCH produced by 0 and 3 assignment types for Academic Year (Fall, Winter, and Spring quarters).
- Enrollment: Total duplicated enrollment for the Fiscal Year.
- % Success: Success rate for the Fiscal Year.
- % Underrep Enrollment: Percent of underrepresented (Asian, Black, Filipino, Hispanic, Native American, and Pacific Islander) student enrollment.
- % Underrep Success: Success rate of underrepresented students.

### Success Rates, Fiscal Year 2006-07

Dimension	Distribution		Non-			Percent		
	Count	Col %	Success	success	Withdraw	Percent Success	Non-success	Percent Withdraw
<b>Ethnicity</b>								
Asian	41	0	23	6	12	56	15	29
Black	11	0	7	1	3	64	9	27
Filipino	10	0	8	0	2	80	0	20
Hispanic	35	0	20	5	10	57	14	29
Native Am	1	0	0	1	0	0	100	0
Pac Islander	3	0	3	0	0	100	0	0
White	87	1	63	5	18	73	6	21
Other	1	0	1	0	0	100	0	0
Unrecorded	20	0	10	3	7	50	15	35
<b>Total</b>	<b>209</b>	<b>2</b>	<b>135</b>	<b>21</b>	<b>52</b>	<b>65</b>	<b>10</b>	<b>25</b>
<b>Gender</b>								
Female	173	1	107	18	47	62	10	27
Male	36	0	28	3	5	78	8	14
Unrecorded		0	0	0	0	0	0	0
<b>Total</b>	<b>209</b>	<b>2</b>	<b>135</b>	<b>21</b>	<b>52</b>	<b>65</b>	<b>10</b>	<b>25</b>
<b>Age</b>								
19 or less	38	0	26	2	10	68	5	26
20 - 24	101	1	67	9	24	67	9	24
25 - 29	34	0	17	7	10	50	21	29
30 - 34	11	0	7	1	3	64	9	27
35 - 39	9	0	8	1	0	89	11	0
40 - 49	9	0	4	1	4	44	11	44
50 +	7	0	6	0	1	86	0	14
<b>Total</b>	<b>209</b>	<b>2</b>	<b>135</b>	<b>21</b>	<b>52</b>	<b>65</b>	<b>10</b>	<b>25</b>

### Definitions

- Enrollment/Grades:** Sum of end-of-term grade count including Ws.
- WSCH:** Sum of quarterly End-of-Term Weekly Student Contact Hours.
- Retention %:** Number of students receiving a successful or non-successful grade / total number of students receiving a grade.
- Success %:** Number of students receiving an A,B,C or CR grade / total number of students receiving a grade.
- FTEF:** Sum of teaching load factors for Fall, Winter, and Spring quarters by assignment type, excluding reassignments.
- Productivity:** Four-term total WSCH / four-term total FTEF, excluding reassignments.
- Reassigned FTEF:** Sum of load in 994, 995, 998, and 999 courses.