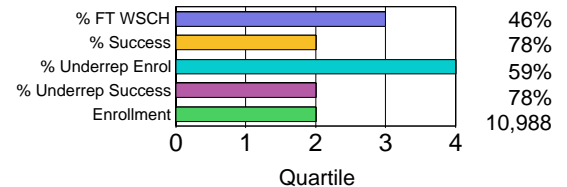


Foothill College Program Review

Language Arts

Dimension	Actual			Projections		
	2004-05	2005-06	2006-07	2007-08	2008-09	2009-10
Enrollment/Grades (Fiscal Year)	11,576	11,115	10,988	To be determined		
WSCH (Fiscal Year)	71,518	67,110	66,088			
Productivity (Fiscal Year)	419	417	417			
Retention % (Fiscal Year)	89%	88%	88%			
Success % (Fiscal Year)	81%	80%	78%			
Performance Indicator Quartile Rank and Value						
Classroom Teaching FTEF (Academic Yr)						
Full-time FTEF	18.95	21.03	22.26			
PT/Overload FTEF	32.08	26.66	25.42			
Total FTEF	51.03	47.68	47.68			
Percent Full-time	37%	44%	47%			
Reassigned FTEF	3.21	3.99	3.08			



Performance Indicator Definitions

% FT WSCH: Percent of WSCH produced by 0 and 3 assignment types for Academic Year (Fall, Winter, and Spring quarters).

Enrollment: Total duplicated enrollment for the Fiscal Year.

% Success: Success rate for the Fiscal Year.

% Underrep Enrollment: Percent of underrepresented (Asian, Black, Filipino, Hispanic, Native American, and Pacific Islander) student enrollment.

% Underrep Success: Success rate of underrepresented students.

Success Rates, Fiscal Year 2006-07

Definitions

Dimension	Distribution		Non-			Percent		
	Count	Col %	Success	success	Withdraw	Percent Success	Non-success	Percent Withdraw
Ethnicity								
Asian	3,543	32	2,956	284	285	84	8	8
Black	386	4	235	58	89	62	15	23
Filipino	217	2	151	20	46	70	9	21
Hispanic	2,128	19	1,585	221	317	75	10	15
Native Am	27	0	16	1	9	62	4	35
Pac Islander	129	1	89	16	23	70	13	18
White	3,399	31	2,678	252	453	79	7	13
Other	282	3	206	40	35	73	14	12
Unrecorded	877	8	683	69	115	79	8	13
Total	10,988	100	8,599	961	1,372	79	9	13
Gender								
Female	5,982	54	4,893	418	650	82	7	11
Male	5,003	46	3,704	543	721	75	11	15
Unrecorded	3	0	2	0	1	67	0	33
Total	10,988	100	8,599	961	1,372	79	9	13
Age								
19 or less	3,923	36	3,122	299	479	80	8	12
20 - 24	3,366	31	2,442	412	495	73	12	15
25 - 29	1,272	12	973	130	163	77	10	13
30 - 34	718	7	584	49	80	82	7	11
35 - 39	465	4	395	34	35	85	7	8
40 - 49	638	6	538	29	69	85	5	11
50 +	601	5	541	8	51	90	1	9
Unrecorded	5	0	4	0	0	100	0	0
Total	10,988	100	8,599	961	1,372	79	9	13

Enrollment/Grades:
Sum of end-of-term grade count including Ws.

WSCH:
Sum of quarterly End-of-Term Weekly Student Contact Hours.

Retention %:
Number of students receiving a successful or non-successful grade / total number of students receiving a grade.

Success %:
Number of students receiving an A,B,C or CR grade / total number of students receiving a grade.

FTEF:
Sum of teaching load factors for Fall, Winter, and Spring quarters by assignment type, excluding reassignments.

Productivity:
Four-term total WSCH / four-term total FTEF, excluding reassignments.

Reassigned FTEF:
Sum of load in 994, 995, 998, and 999 courses.