



Enrollment Update for Senior Staff – 2/7/07

The following material was presented to the

Senior Staff of the

**Foothill-De Anza Community College District
together with an oral narrative by**

Robert B. Barr, Ph.D.

Executive Director

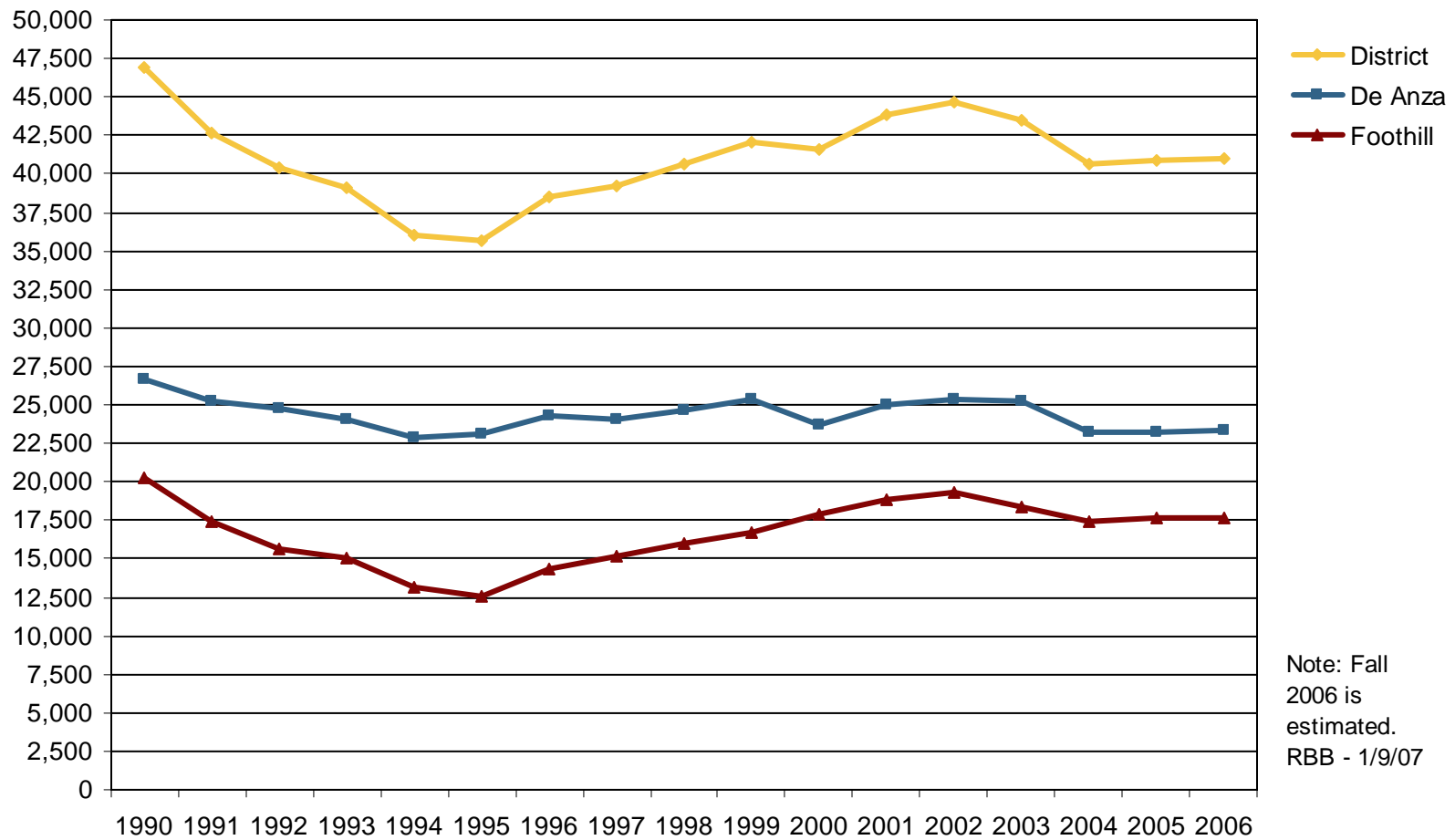
Institutional Research and Planning



FOOTHILL-DE ANZA
Community College District

History of Fall Headcount

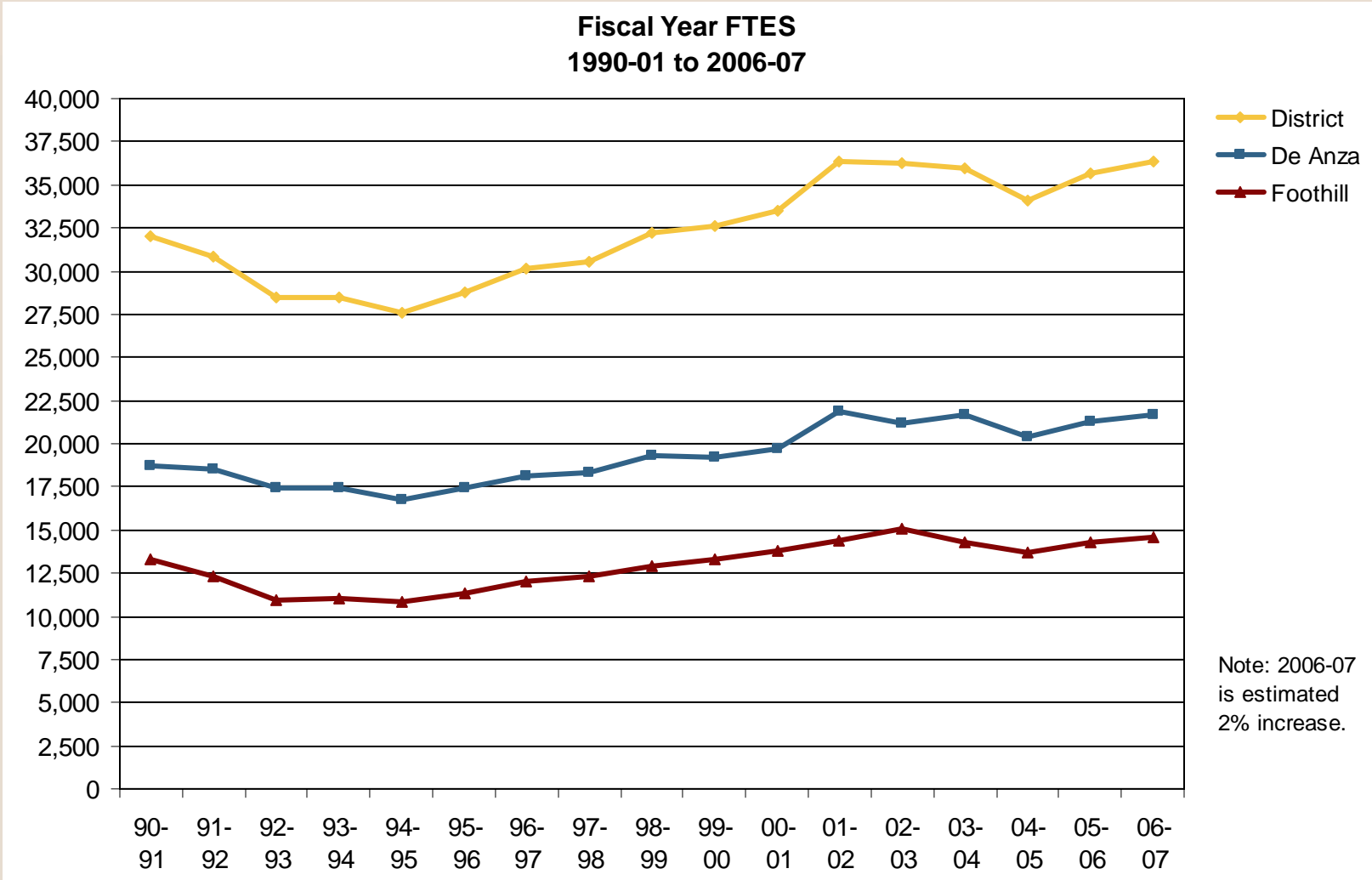
Unduplicated Fall Headcount
1990 to 2006



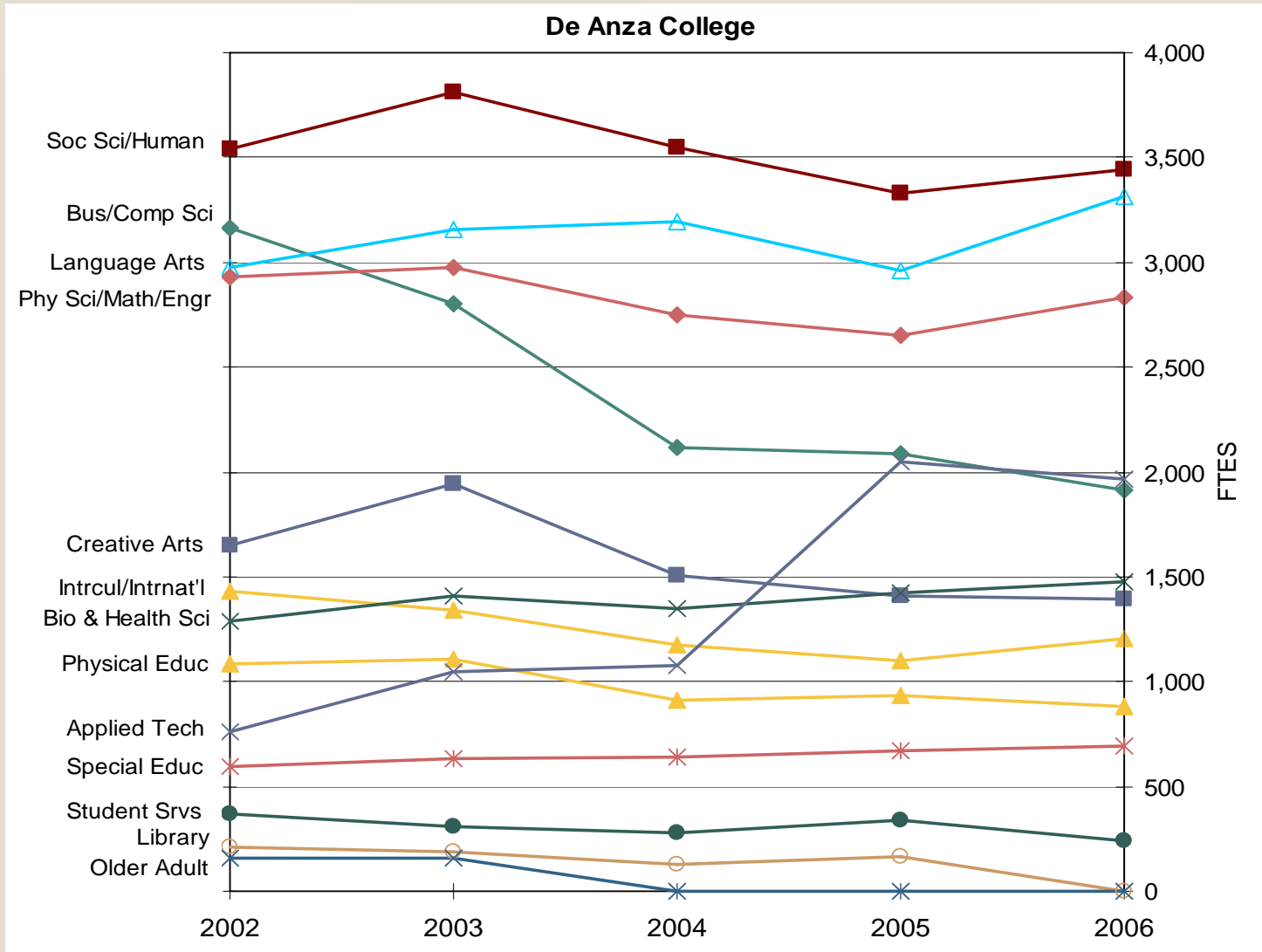


FOOTHILL-DE ANZA
Community College District

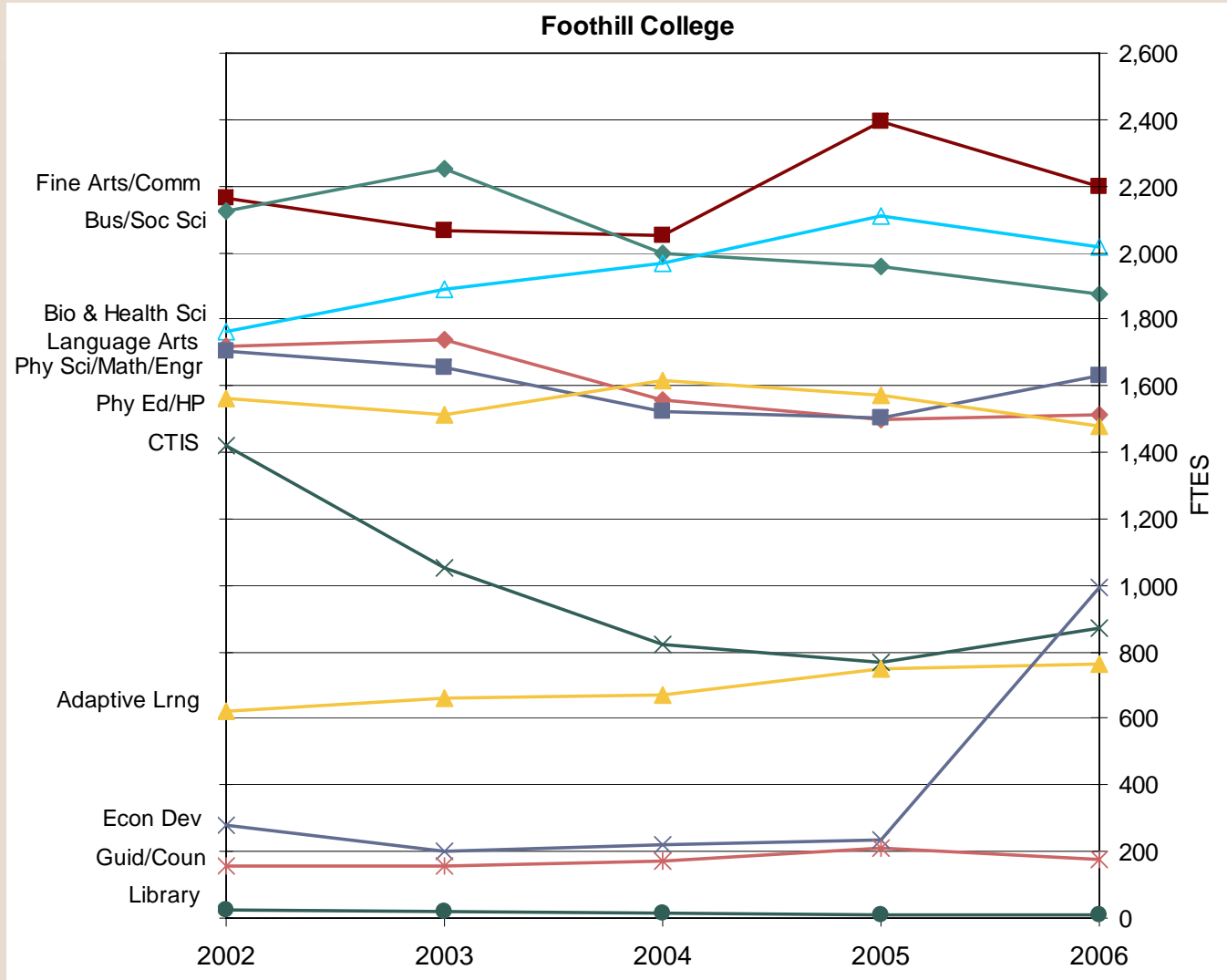
History of Fiscal Year FTES



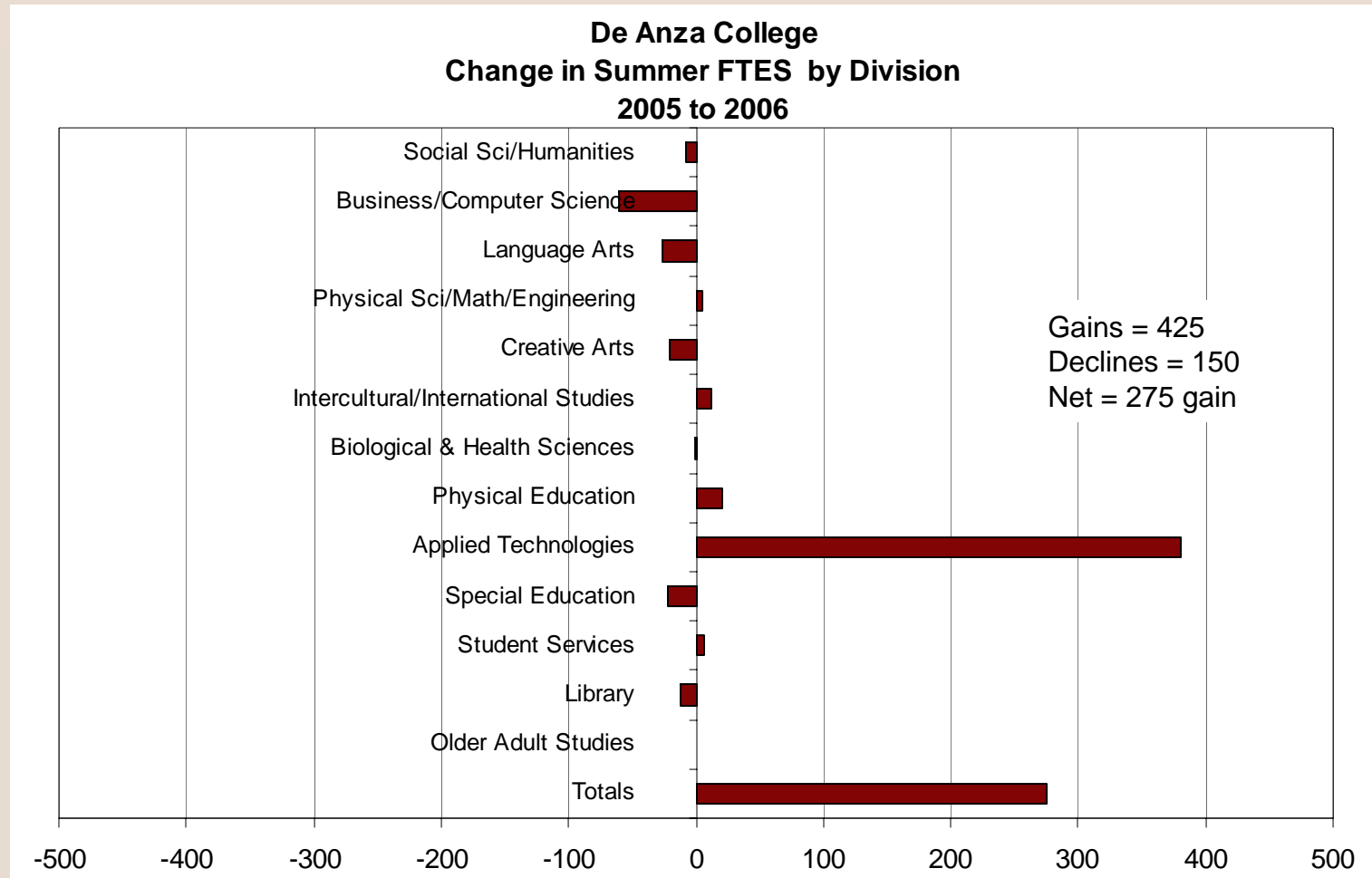
Fall Annualized FTES by Division, De Anza



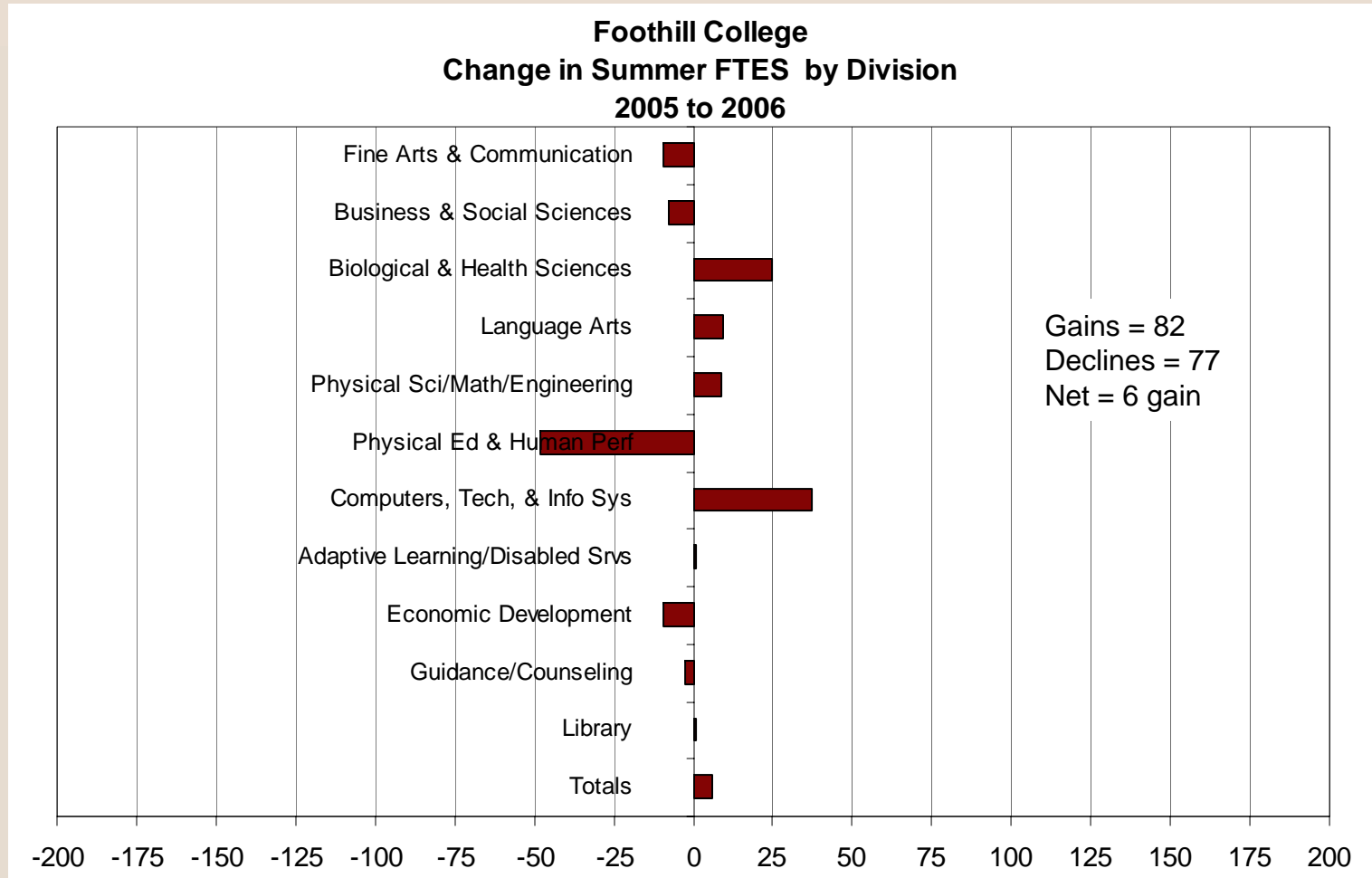
Fall Annualized FTES by Division, Foothill



Change in Summer FTES by Division, M05 to M06

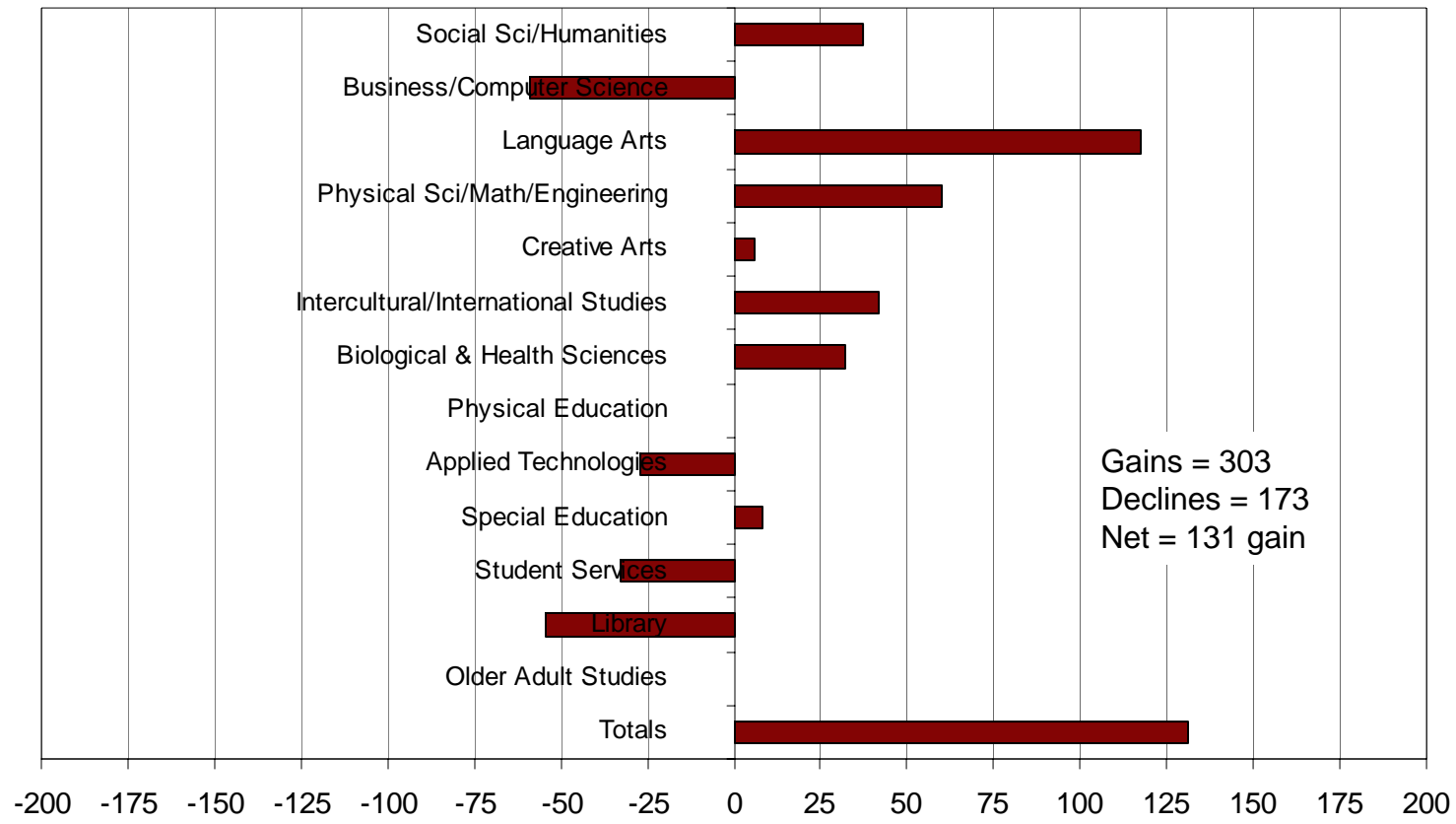


Change in Summer FTES by Division, M05 to M06

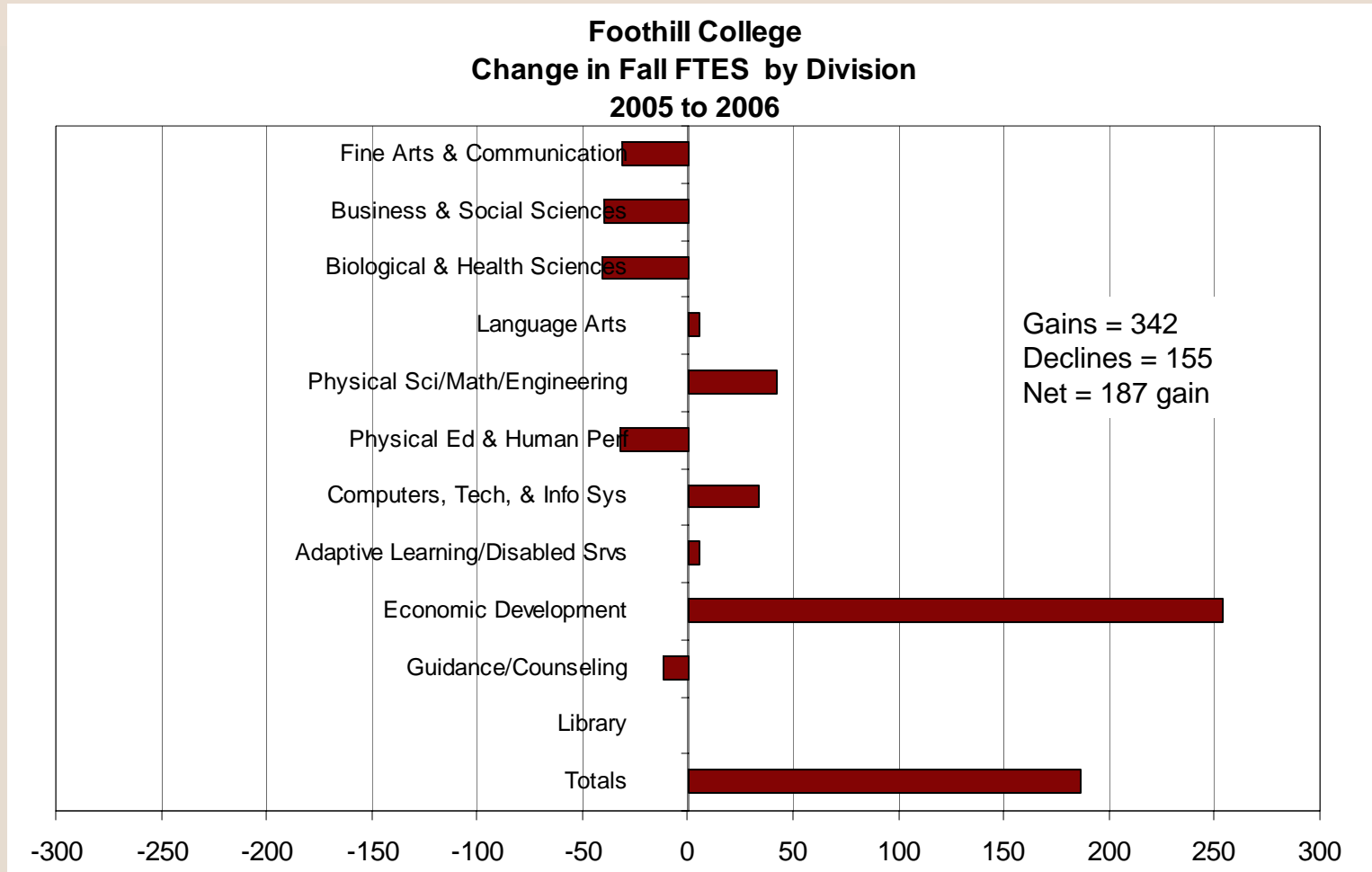


Change in Fall FTES by Division, F05 to F06

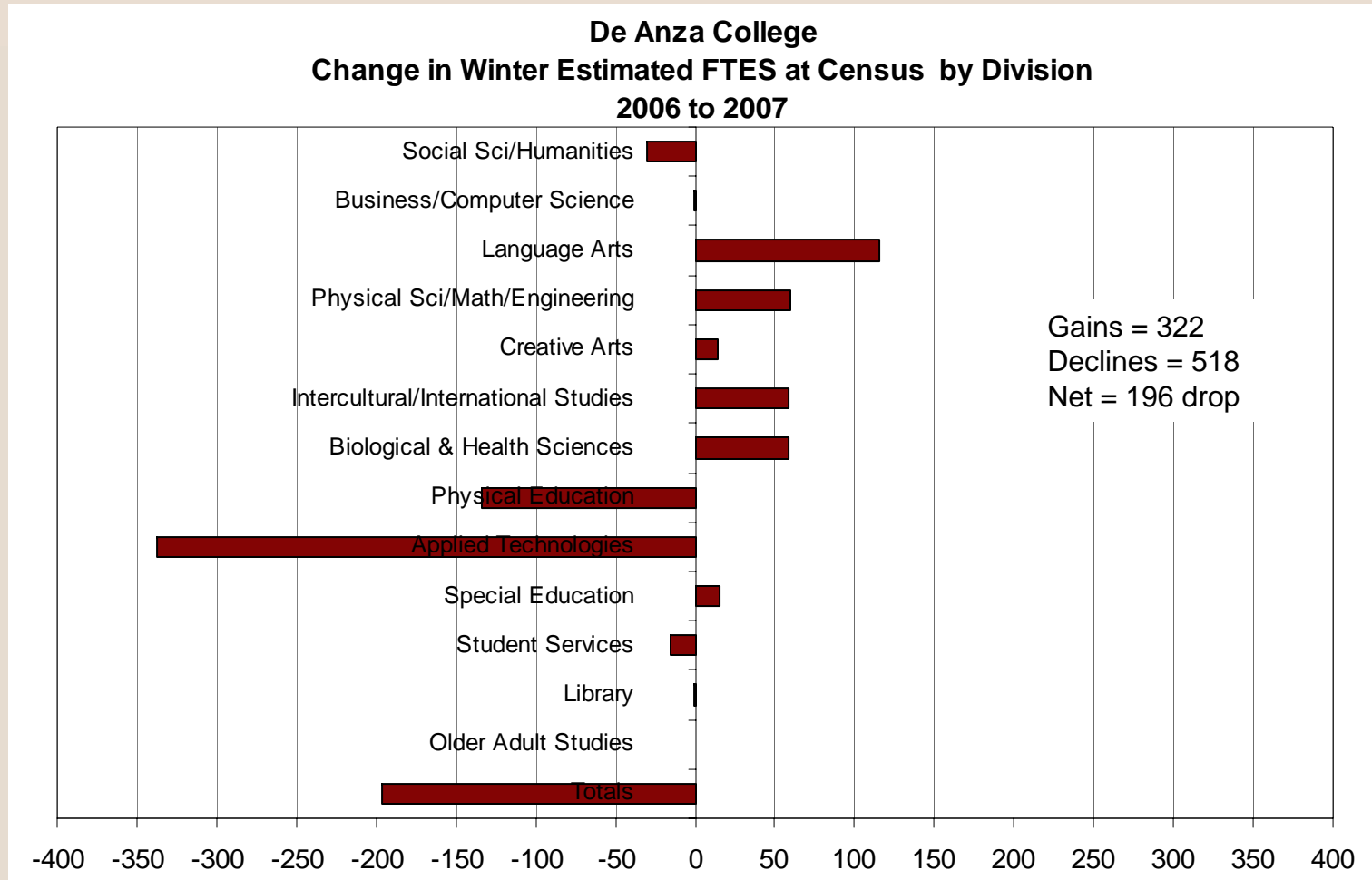
De Anza College
Change in Fall FTES by Division
2005 to 2006



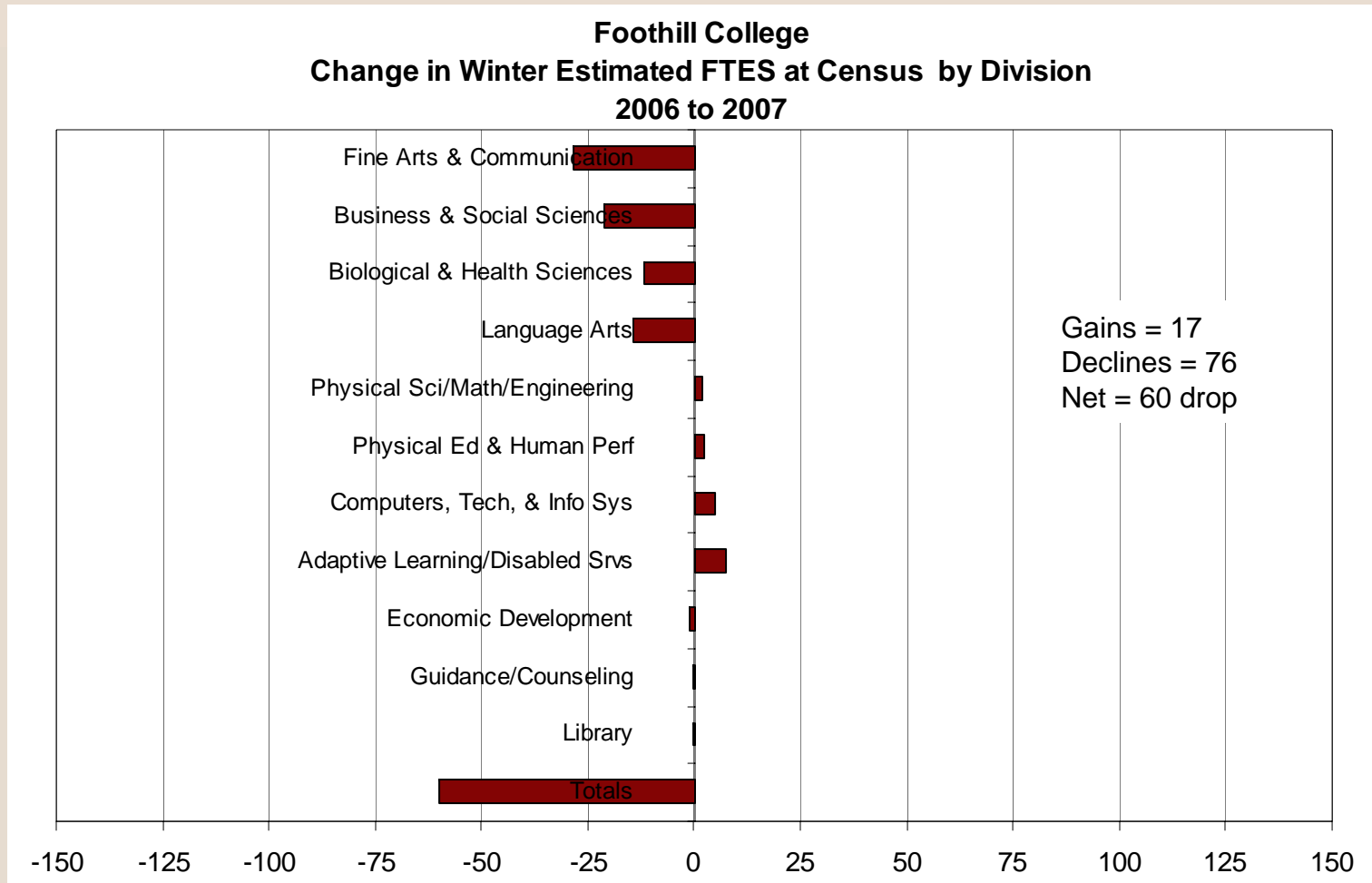
Change in Fall FTES by Division, F05 to F06



Change in Wtr Est FTES by Division, W06 to W07



Change in Wtr Est FTES by Division, W06 to W07





Growing and Declining Department FTES, De Anza

Department	2002F	2006F	Increase
Growing			
MCNC/Manufacturing & Design*	494	1,693	1,199
CAD and Digital Imaging*	0	171	171
English/Writing	1,391	1,548	158
Special Education	387	528	141
Speech/Communication	365	452	87
Declining			
Computer Information Systems	1,671	446	-1,225
Intercultural Studies	654	391	-262
Learning Center	208	4	-204
Physical Education	1,084	885	-199
Older Adult Studies	162	0	-162



Growing and Declining Department FTES, Foothill

Department	2002F	2006F	Increase
Growing			
Coop Work Experience Ed.	277	993	717
Biology	398	601	203
Performing Arts	705	894	189
Chemistry	250	378	128
Adaptive Learning: Community Based	248	347	100
Declining			
Computer Information Systems	813	366	-446
Phys. Ed/Human Performance	1,529	1,370	-159
Computers on the Internet	249	99	-150
Music Performance	151	26	-125
English as a Second Language	538	426	-111



Growing and Declining Department FTES, De Anza

Department	2006W	2007W	Increase
Growing			
Mathematics	508.9	570.8	61.9
English/Writing	431.9	490.6	58.7
English as a Second Language	154.7	194.7	39.9
LLPE	0	30.3	30.3
Environmental Studies	54.9	79.8	24.9
Declining			
Manufacturing & CNC Technologies	915.7	578.1	-337.6
Physical Education	408.7	244.8	-163.9
Readiness Program	38.2	17.8	-20.3
Co-op Ed: Work Exp. & Comm. Int.	18.9		-18.9
Law Enforcement Curriculum	17.3	2.4	-14.9



Growing and Declining Department FTES, Foothill

Department	2006W	2007W	Increase
Growing			
Adaptive Learning: Community Based	102.4	120.9	18.5
Phys. Ed/Human Performance	261.6	273.5	11.9
Economics	61.8	72.2	10.3
Chemistry	107.9	117.2	9.3
Computer & Software Training	33.1	41.2	8.1
Declining			
Music	164.2	132.3	-31.9
Business	60.8	31.3	-29.6
English as a Second Language	125.8	99.5	-26.3
History	93.7	67.6	-26.1
Biology	216.4	195.3	-21.1

Note: Foothill's year-long PE is not included. Job Corps is included for De Anza.

Enrollment Indicators Report Census Day, Winter 2006 vs. Winter 2007

(Excludes Non-credit and Apprenticeship classes)

Registration thru Monday Jan 23 2006 for Wtr 2006 and thru Monday Jan 22 2007 for Wtr 2007

Section, Headcount, and WSCH Totals

College	2006W			2007W			Increase			% Increase		
	Sections	Hdcnt	WSCH	Sections	Hdcnt	WSCH	Sections	Hdcnt	WSCH	Sections	Hdcnt	WSCH
DA	2,150	22,035	282,790	2,159	21,503	272,528	9	-532	-10,263	0.4%	-2.4%	-3.6%
FH	1,404	12,402	152,304	1,412	11,650	143,536	8	-752	-8,768	0.6%	-6.1%	-5.8%
District	3,554	34,437	435,094	3,571	33,153	416,064	17	-1,284	-19,030	0.5%	-3.7%	-4.4%

Section, Headcount, and WSCH by Accounting Method

College/Acct Method		2006W			2007W			Increase			% Increase		
		Sections	Hdcnt	WSCH	Sections	Hdcnt	WSCH	Sections	Hdcnt	WSCH	Sections	Hdcnt	WSCH
DA	Daily Census	57	579	3,681	63	537	3,769	6	-42	88	10.5%	-7.3%	2.4%
	Positive Attnd	254	5,177	58,758	214	3,479	34,655	-40	-1,698	-24,103	-15.7%	-32.8%	-41.0%
	Wky Census	1,839	18,789	220,351	1,882	19,229	234,104	43	440	13,753	2.3%	2.3%	6.2%
FH	Daily Census	22	296	1,841	38	397	2,343	16	101	502	72.7%	34.1%	27.3%
	Positive Attnd	132	1,275	10,396	97	875	6,671	-35	-400	-3,725	-26.5%	-31.4%	-35.8%
	Wky Census	1,250	11,961	140,067	1,277	11,331	134,522	27	-630	-5,545	2.2%	-5.3%	-4.0%

Headcount and WSCH by Resident/Non-resident Fee

College/Fee Type		2006W		2007W		Increase		% Increase	
		Hdcnt	WSCH	Hdcnt	WSCH	Hdcnt	WSCH	Hdcnt	WSCH
DA	Non-resident	1,399	23,201	1,669	28,771	270	5,569	19.3%	24.0%
	Resident	20,636	259,589	19,834	243,757	-802	-15,832	-3.9%	-6.1%
FH	Non-resident	924	16,811	967	17,503	43	692	4.7%	4.1%
	Resident	11,478	135,493	10,683	126,033	-795	-9,460	-6.9%	-7.0%
Dist	Non-resident	66,176	40,013	2,576	46,274	321	6,261	14.2%	15.6%
	Resident	31,464	395,082	29,881	369,790	-1,583	-25,292	-5.0%	-6.4%

Note: WSCH is estimated WSCH, i.e., it assumes positive attendance students attend all sessions. Not all sections may be entered, especially positive attendance sections. Section count is only of sections with currently active enrollment. Noncredit enrollment is not included.

[Extract Dates: Jan 23 2007, Jan 24 2006]

FHDA IR&P 01/26/07

Note: Foothill's year-long PE is not included. Job Corps is included for De Anza.

Enrollment Indicators Report - Residents Only Census Day, Winter 2006 vs. Winter 2007

(Excludes Non-credit and Apprenticeship classes)

Registration thru Monday Jan 23 2006 for Wtr 2006 and thru Monday Jan 22 2007 for Wtr 2007

Section, Headcount, and WSCH Totals

College	2006W			2007W			Increase			% Increase		
	Sections	Hdcnt	WSCH	Sections	Hdcnt	WSCH	Sections	Hdcnt	WSCH	Sections	Hdcnt	WSCH
DA	2,142	20,636	259,589	2,156	19,834	243,757	14	-802	-15,832	0.7%	-3.9%	-6.1%
FH	1,394	11,478	135,493	1,395	10,683	126,033	1	-795	-9,460	0.1%	-6.9%	-7.0%
District	3,536	32,114	395,082	3,551	30,517	369,790	15	-1,597	-25,292	0.4%	-5.0%	-6.4%

Section, Headcount, and WSCH by Accounting Method

College/Acct Method		2006W			2007W			Increase			% Increase		
		Sections	Hdcnt	WSCH	Sections	Hdcnt	WSCH	Sections	Hdcnt	WSCH	Sections	Hdcnt	WSCH
DA	Daily Census	56	545	3,531	63	482	3,599	7	-63	68	12.5%	-11.6%	1.9%
	Positive Attnd	254	4,988	57,812	213	3,348	34,082	-41	-1,640	-23,730	-16.1%	-32.9%	-41.0%
	Wky Census	1,832	17,413	198,246	1,880	17,577	206,076	48	164	7,830	2.6%	0.9%	3.9%
FH	Daily Census	20	232	1,693	37	313	2,106	17	81	413	85.0%	34.9%	24.4%
	Positive Attnd	130	1,177	9,857	95	805	6,040	-35	-372	-3,817	-26.9%	-31.6%	-38.7%
	Wky Census	1,244	11,040	123,943	1,263	10,369	117,886	19	-671	-6,056	1.5%	-6.1%	-4.9%

Note: WSCH is estimated WSCH, i.e., it assumes positive attendance students attend all sessions. Not all sections may be entered, especially positive attendance sections. Section count is only of sections with currently active enrollment. Noncredit enrollment is not included.

[Extract Dates: Jan 23 2007, Jan 24 2006]

FHDA IR&P 01/26/07

Note: Foothill's year-long PE is not included. Job Corps is included for De Anza.

Enrollment Indicators Report - Non-residents Only Census Day, Winter 2006 vs. Winter 2007

(Excludes Non-credit and Apprenticeship classes)

Registration thru Monday Jan 23 2006 for Wtr 2006 and thru Monday Jan 22 2007 for Wtr 2007

Section, Headcount, and WSCH Totals

College	2006W			2007W			Increase			% Increase		
	Sections	Hdcnt	WSCH	Sections	Hdcnt	WSCH	Sections	Hdcnt	WSCH	Sections	Hdcnt	WSCH
DA	1,429	1,399	23,201	1,497	1,669	28,771	68	270	5,569	4.8%	19.3%	24.0%
FH	821	924	16,811	797	967	17,503	-24	43	692	-2.9%	4.7%	4.1%
District	2,250	2,323	40,013	2,294	2,636	46,274	44	313	6,261	2.0%	13.5%	15.6%

Section, Headcount, and WSCH by Accounting Method

College/Acct Method		2006W			2007W			Increase			% Increase		
		Sections	Hdcnt	WSCH	Sections	Hdcnt	WSCH	Sections	Hdcnt	WSCH	Sections	Hdcnt	WSCH
DA	Daily Census	25	34	150	35	55	170	10	21	20	40.0%	61.8%	13.1%
	Positive Attnd	97	189	946	81	131	573	-16	-58	-373	-16.5%	-30.7%	-39.5%
	Wky Census	1,307	1,376	22,106	1,381	1,652	28,028	74	276	5,922	5.7%	20.1%	26.8%
FH	Daily Census	10	64	148	14	84	236	4	20	88	40.0%	31.3%	59.6%
	Positive Attnd	55	98	539	35	70	631	-20	-28	92	-36.4%	-28.6%	17.2%
	Wky Census	756	921	16,125	748	962	16,636	-8	41	511	-1.1%	4.5%	3.2%

Note: WSCH is estimated WSCH, i.e., it assumes positive attendance students attend all sessions. Not all sections may be entered, especially positive attendance sections. Section count is only of sections with currently active enrollment. Noncredit enrollment is not included.

[Extract Dates: Jan 23 2007, Jan 24 2006]

FHDA IR&P 01/26/07

Enrollment Indicators Report - Non-credit Only Census Day, Winter 2006 vs. Winter 2007

(Excludes Apprenticeship classes)

Registration thru Monday Jan 23 2006 for Wtr 2006 and thru Monday Jan 22 2007 for Wtr 2007

Section, Headcount, and WSCH Totals

College	2006W			2007W			Increase			% Increase			Goal WSCH
	Sections	Hdcnt	WSCH	Sections	Hdcnt	WSCH	Sections	Hdcnt	WSCH	Sections	Hdcnt	WSCH	
DA	12	75	195	36	728	1,608	24	653	1,413	200.0%	870.7%	724.4%	?
FH	72	1,152	4,303	85	1,200	4,987	13	48	685	18.1%	4.2%	15.9%	?
District	84	1,227	4,498	121	1,928	6,595	37	701	2,097	44.0%	57.1%	46.6%	?

Section, Headcount, and WSCH by Accounting Method

College/Acct Method		2006W			2007W			Increase			% Increase		
		Sections	Hdcnt	WSCH	Sections	Hdcnt	WSCH	Sections	Hdcnt	WSCH	Sections	Hdcnt	WSCH
DA	Positive Attn'd	12	75	195	36	728	1,608	24	653	1,413	200.0%	870.7%	724.4%
FH	Daily Census	1	11	11				-1	-11	-11	-100.0%	-100.0%	-100.0%
	Positive Attn'd	69	1,116	4,217	85	1,200	4,987	16	84	771	23.2%	7.5%	18.3%
	Wky Census	2	25	75				-2	-25	-75	-100.0%	-100.0%	-100.0%

Headcount and WSCH by Resident/Non-resident Fee

College/Fee Type		2006W		2007W		Increase		% Increase	
		Hdcnt	WSCH	Hdcnt	WSCH	Hdcnt	WSCH	Hdcnt	WSCH
DA	Non-resident	5	10	31	68	26	58	520.0%	580.0%
	Resident	70	185	697	1,540	627	1,355	895.7%	732.2%
FH	Non-resident	5	11	8	25	3	14	60.0%	127.3%
	Resident	1,147	4,292	1,192	4,962	45	671	3.9%	15.6%
Dist	Non-resident	10	21	39	93	29	72	290.0%	342.9%
	Resident	1,217	4,477	1,889	6,502	672	2,025	55.2%	45.2%

Note: WSCH is estimated WSCH, i.e., it assumes positive attendance students attend all sessions. Not all sections may be entered, especially positive attendance sections. Section count is only of sections with currently active enrollment.

[Extract Dates: Jan 23 2007, Jan 24 2006]

FHDA IR&P 01/26/07