

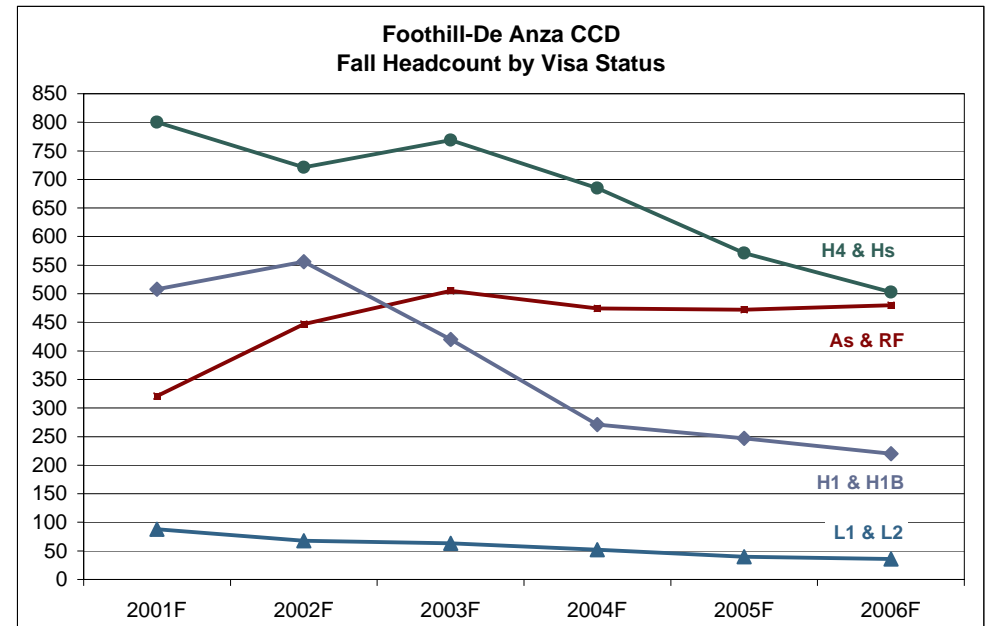
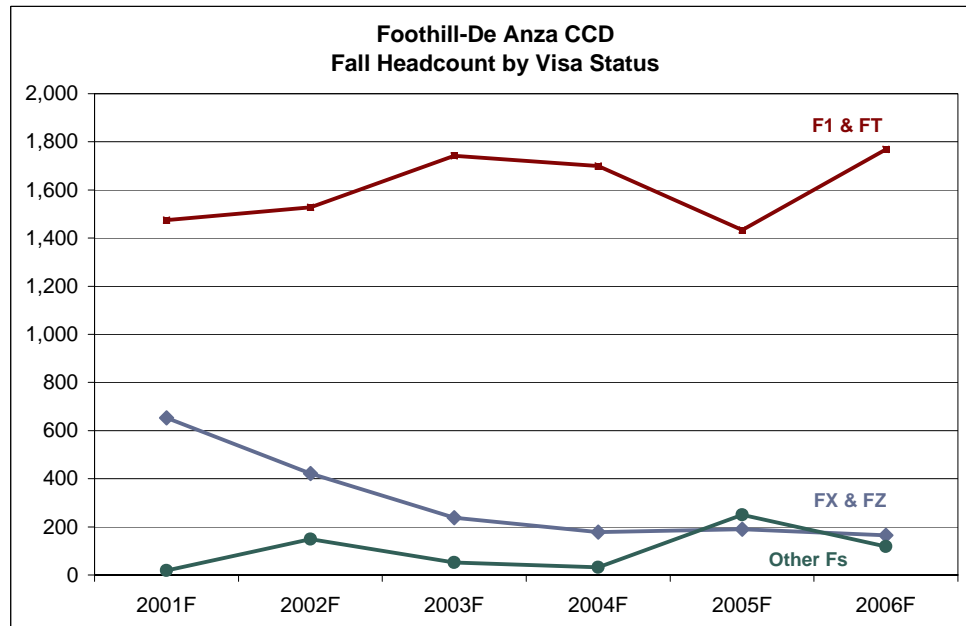
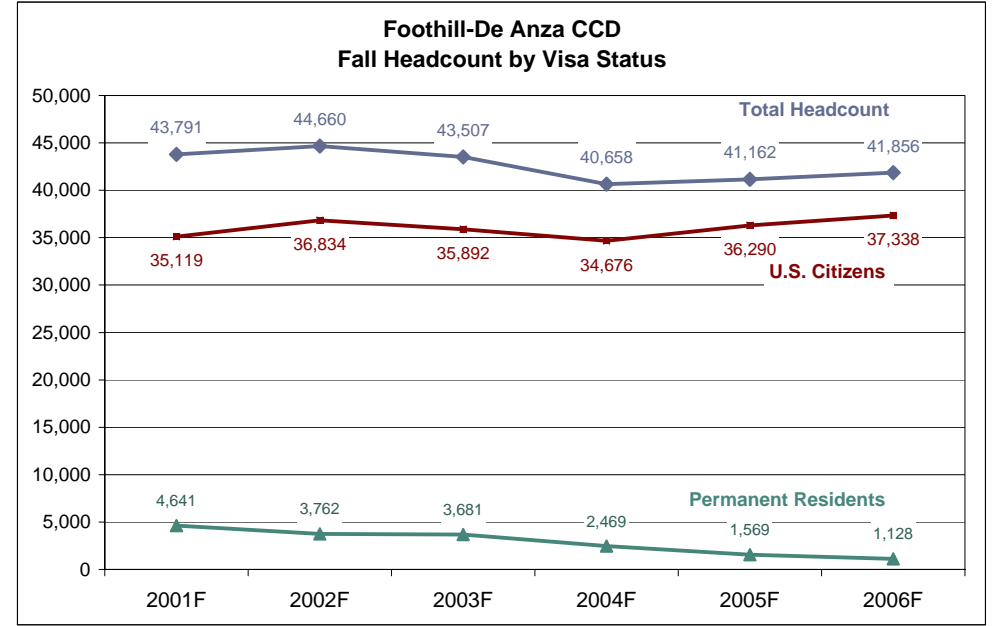
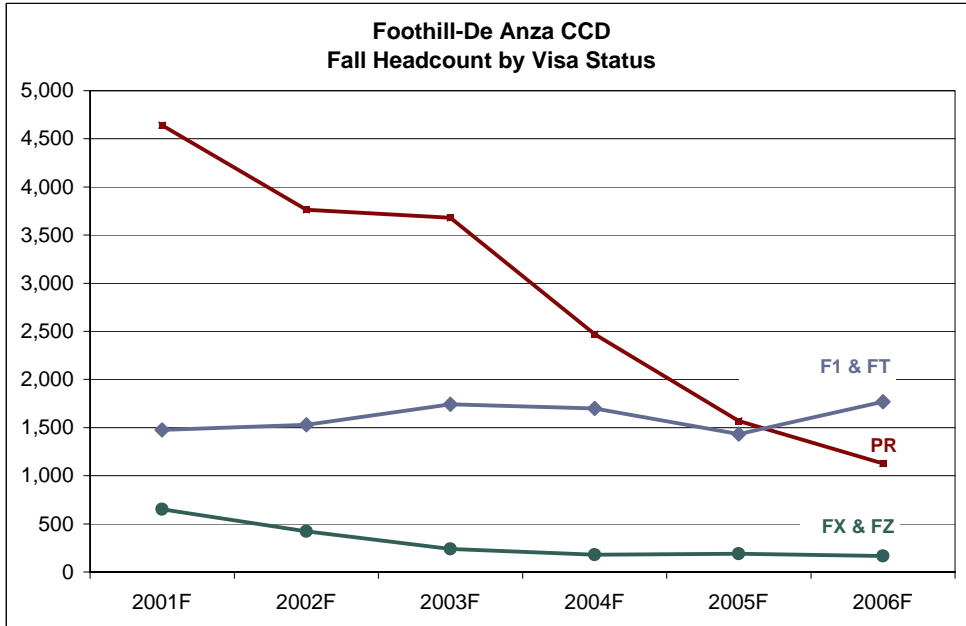
## Analysis of Permanent Resident Student Credit Enrollment

Over the past six years, Permanent Resident credit headcount enrollment has:

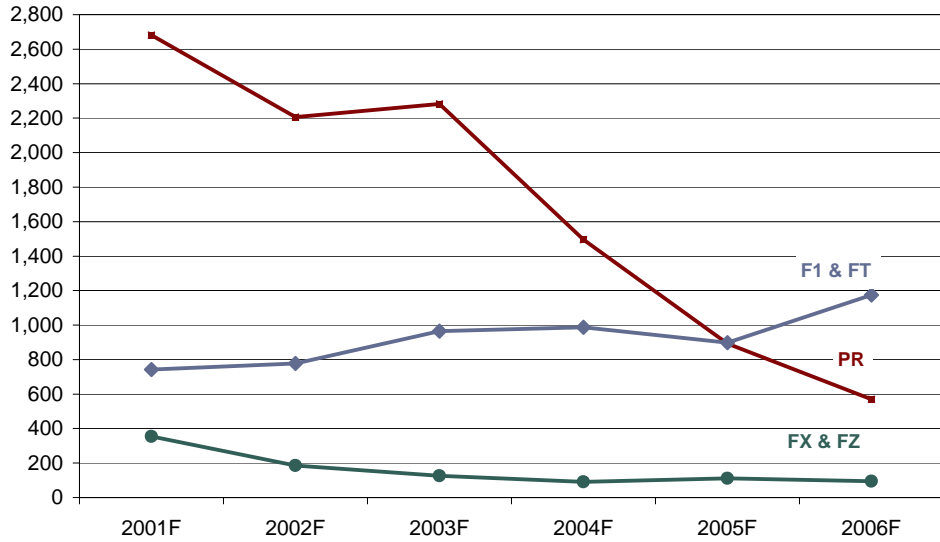
- o Declined by 76% from 4,641 in Fall 2001 to 1,128 in Fall 2006
- o U.S. citizen enrollment has risen by 6.3% from 35,119 to 37,338
- o The gain in citizen enrollment is about two-thirds the loss in PR enrollment
- o Overall enrollment has declined by 4.4% from 43,791 to 41,856
- o F1 and FT enrollment increased by 20% from 1,475 to 1,768
- o FX and FZ enrollment decreased by 75% from 653 to 165
- o H1 and H1B (of which there are few) enrollment decreased by 57% from 508 to 220
- o H4 and other H's (of which there are few) enrollment decreased by 37% from 800 to 503
- o Asylum (A's) & Refugee (RF) enrollment which increased by 57% from 321 to 505 in Fall 2003, has been stable since
- o The patterns are generally similar at each college except that F1 & FT enrollment increased by 58% at De Anza while it decreased by 20% at Foothill

An analysis of Permanent Residents by demographic factors over the past six falls reveals:

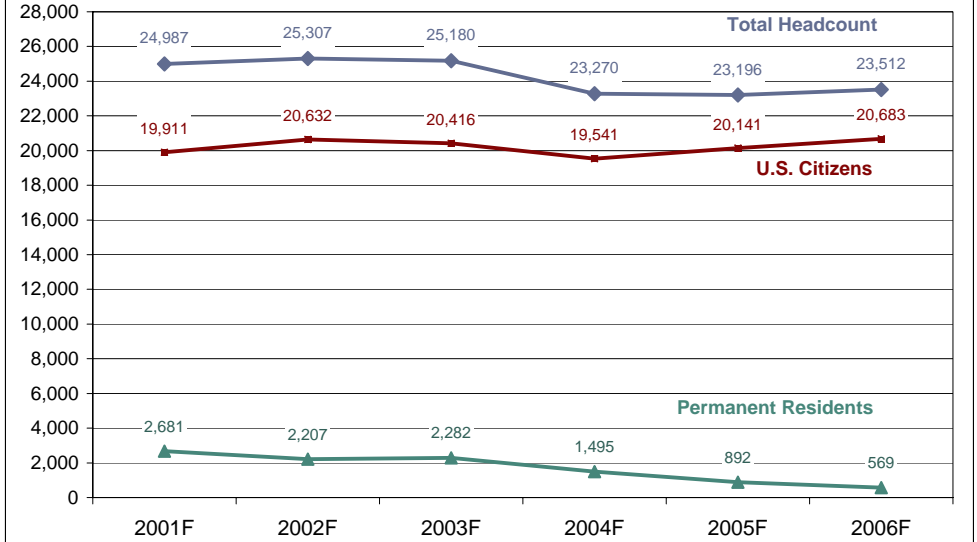
- o PR's decreased by 92% among first-time students and by 81% among returning students
- o The decline was 67% among continuing students who currently make up 66% of all PR's
- o The decline was equal among males and females
- o The decline was equal among age groups
- o The decline was roughly equal among categories of highest education
- o A third have a foreign secondary diploma or college degree
- o A third of PR's have a U.S. high school diploma
- o A quarter have an associate's of higher degree (domestic or foreign)
- o The decline is roughly equal among categories of educational goal
- o A third state transfer as their goal while 14% express a goal related to job change or advancement
- o Only 6% indicate a vocational certificate or degree as a goal
- o The decline is equal between day and evening but day students make up 83%.
- o The average units earned is 6.49 through it is 7.87 at De Anza and 5.08 at Foothill
- o Evening students earned half the units as day students
- o Units earned has been stable over the six year period
- o The decline has been equal for both full- and part-time students.
- o Three-quarters are part-time students
- o The decline has been equal among ethnic groups
- o Half are Asian with another six percent Filipino or Pacific Islander (56% altogether)
- o 16% are Hispanic and 17% are white
- o The declines have been equal among community college district of origin
- o 43% are from within the district, 18% from the Foothill service area and 25% from the De Anza service area



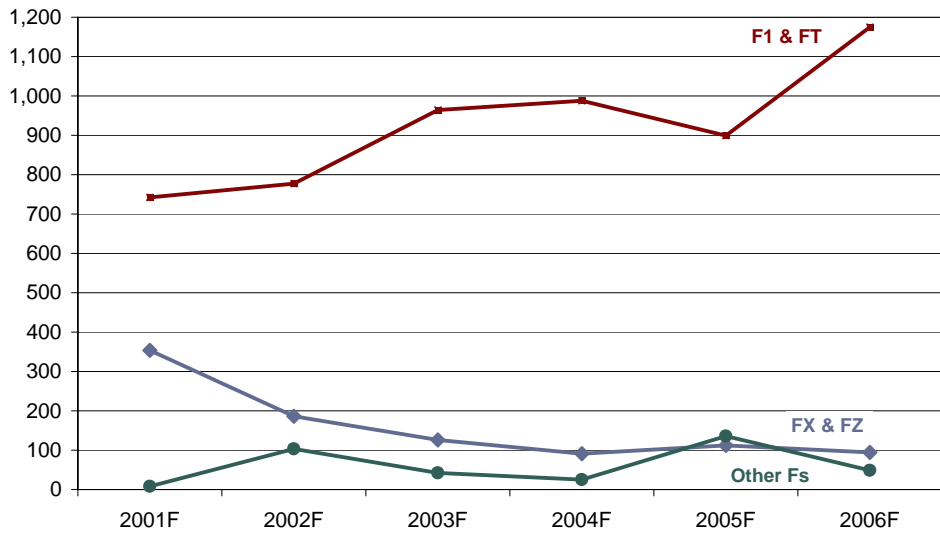
**De Anza College  
Fall Headcount by Visa Status**



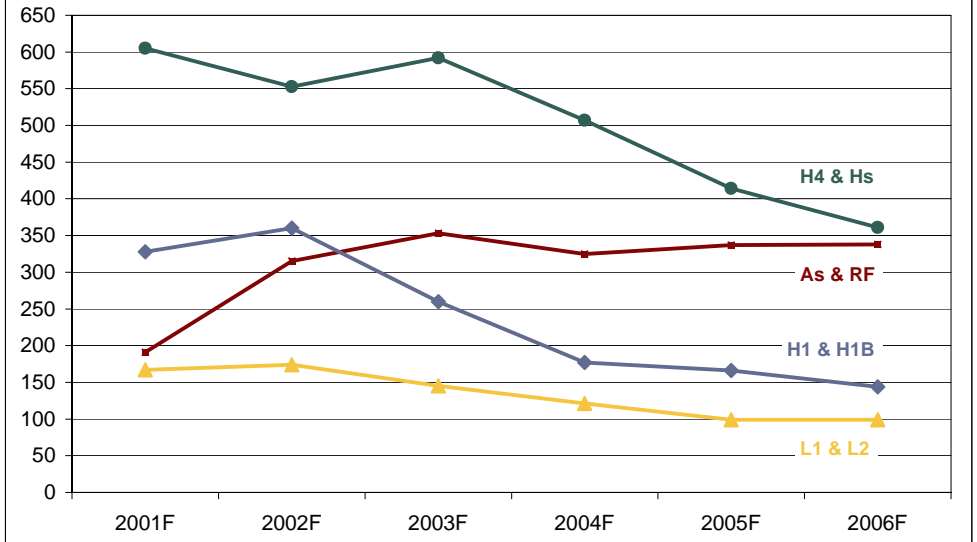
**De Anza College  
Fall Headcount by Visa Status**



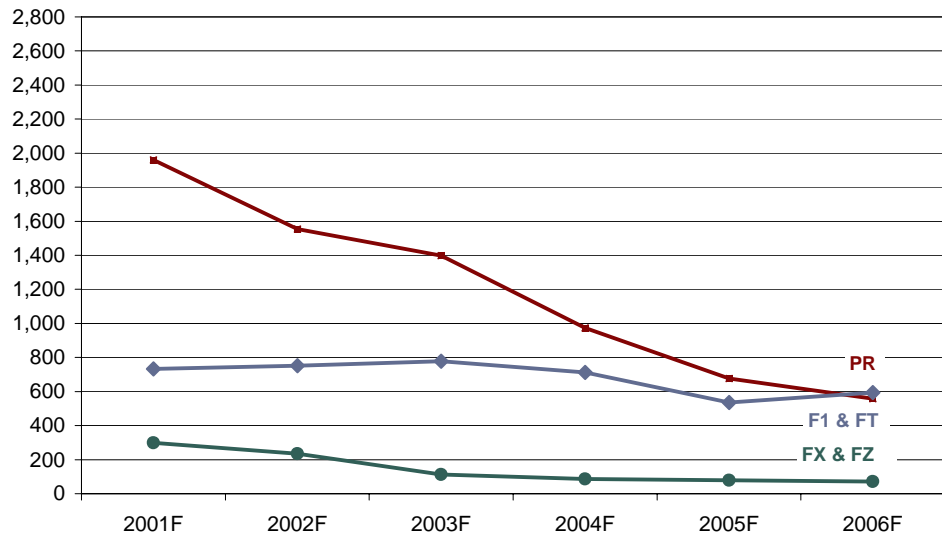
**De Anza College  
Fall Headcount by Visa Status**



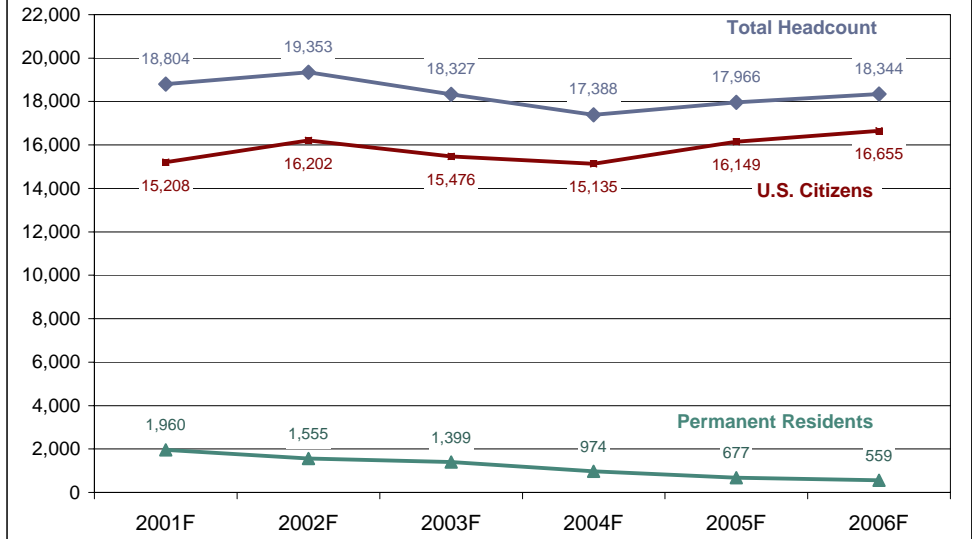
**De Anza College  
Fall Headcount by Visa Status**



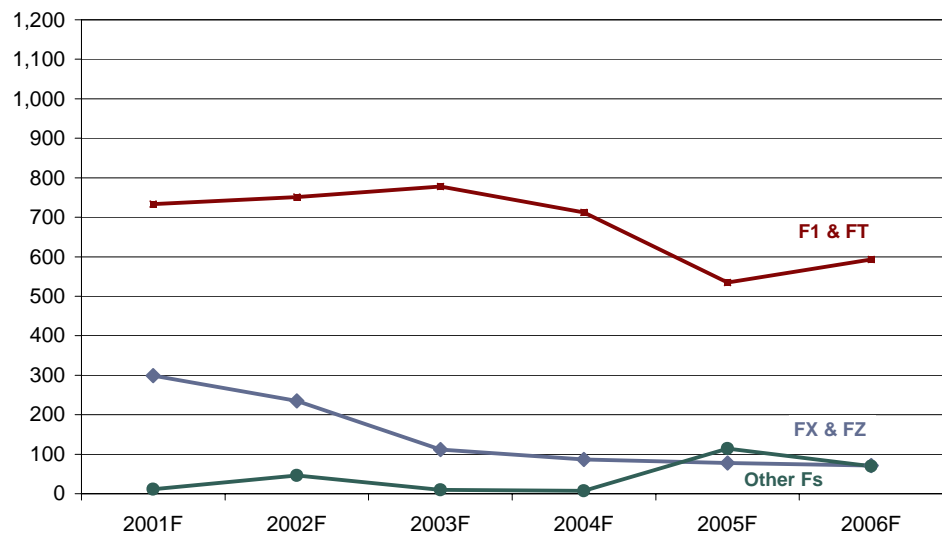
**Foothill College  
Fall Headcount by Visa Status**



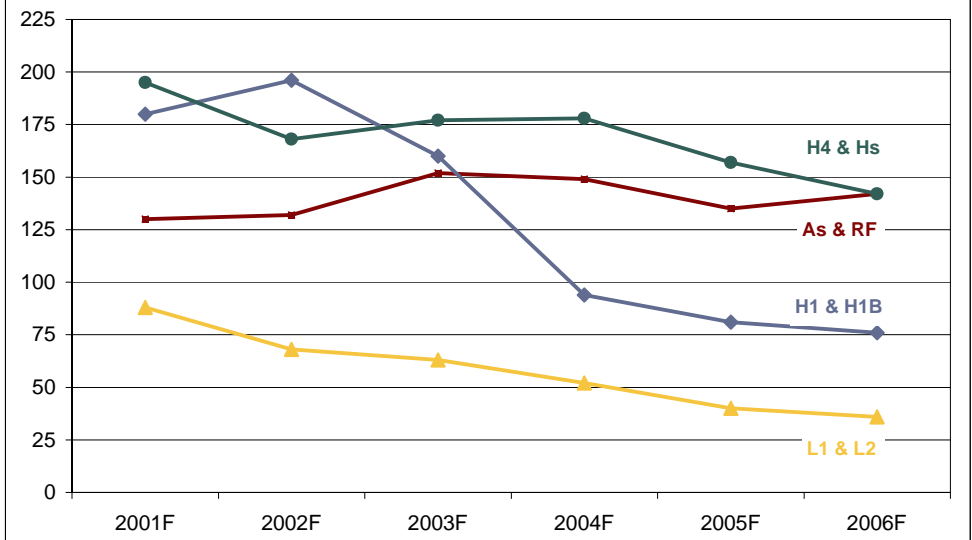
**Foothill College  
Fall Headcount by Visa Status**



**Foothill College  
Fall Headcount by Visa Status**



**Foothill College  
Fall Headcount by Visa Status**



**Fall End-of-Term Credit Headcount  
by Visa Status**

College/Visa Type	2001F	2002F	2003F	2004F	2005F	2006F
<b>De Anza</b>						
A's & RF	191	315	353	325	337	338
F1 & FT	742	777	964	988	899	1,175
FX & FZ	354	186	126	91	112	94
Other F's	8	103	42	25	136	49
H1 & H1B*	328	360	260	177	166	144
H4 & H's*	605	553	592	507	414	361
L1 & L2	167	174	145	121	99	99
PR	2,681	2,207	2,282	1,495	892	569
Citizens & Other Visa	19,911	20,632	20,416	19,541	20,141	20,683
<b>Total</b>	<b>24,987</b>	<b>25,307</b>	<b>25,180</b>	<b>23,270</b>	<b>23,196</b>	<b>23,512</b>
Citizens & PRs	22,592	22,839	22,698	21,036	21,033	21,252
<b>Foothill</b>						
A's & RF	130	132	152	149	135	142
F1 & FT	733	751	778	712	535	593
FX & FZ	299	235	112	87	78	71
Other F's	11	46	10	7	114	70
H1 & H1B*	180	196	160	94	81	76
H4 & Hs*	195	168	177	178	157	142
L1 & L2	88	68	63	52	40	36
PR	1,960	1,555	1,399	974	677	559
Citizens & Other Visa	15,208	16,202	15,476	15,135	16,149	16,655
<b>Total</b>	<b>18,804</b>	<b>19,353</b>	<b>18,327</b>	<b>17,388</b>	<b>17,966</b>	<b>18,344</b>
Citizens & PRs	17,168	17,757	16,875	16,109	16,826	17,214
<b>District</b>						
A's & RF	321	447	505	474	472	480
F1 & FT	1,475	1,528	1,742	1,700	1,434	1,768
FX & FZ	653	421	238	178	190	165
Other F's	19	149	52	32	250	119
H1 & H1B*	508	556	420	271	247	220
H4 & H's*	800	721	769	685	571	503
L1 & L2	255	242	208	173	139	135
PR	4,641	3,762	3,681	2,469	1,569	1,128
Citizens & Other Visa	35,119	36,834	35,892	34,676	36,290	37,338
<b>Total</b>	<b>43,791</b>	<b>44,660</b>	<b>43,507</b>	<b>40,658</b>	<b>41,162</b>	<b>41,856</b>
Citizens & PRs	39,760	40,596	39,573	37,145	37,859	38,466

\* Count is very small for those visas with an astrick

Source: FHDA IR&P Data Warehouse Deborah

FHDA IR&P - RBB - 6/1/07

**Fall End-of-Term Credit Headcount  
Permanent Residents by Enrollment Status**

College/Enrollment Status	2001F	2002F	2003F	2004F	2005F	2006F
<b>De Anza</b>						
First-time	791	660	363	173	116	45
Returning	686	395	244	115	85	48
Continuing	1,142	1,118	1,634	1,198	675	464
Special Admit (K-12)	62	34	41	9	16	12
<b>Total</b>	<b>2,681</b>	<b>2,207</b>	<b>2,282</b>	<b>1,495</b>	<b>892</b>	<b>569</b>
<b>Foothill</b>						
First-time	476	426	250	101	78	62
Returning	335	255	125	207	155	143
Continuing	1,105	831	1,002	595	374	280
Special Admit (K-12)	44	43	22	71	70	74
<b>Total</b>	<b>1,960</b>	<b>1,555</b>	<b>1,399</b>	<b>974</b>	<b>677</b>	<b>559</b>
<b>District</b>						
First-time	1,267	1,086	613	274	194	107
Returning	1,021	650	369	322	240	191
Continuing	2,247	1,949	2,636	1,793	1,049	744
Special Admit (K-12)	106	77	63	80	86	86
<b>Total</b>	<b>4,641</b>	<b>3,762</b>	<b>3,681</b>	<b>2,469</b>	<b>1,569</b>	<b>1,128</b>

**Fall End-of-Term Credit Headcount  
Permanent Residents by Gender**

College/Gender	2001F	2002F	2003F	2004F	2005F	2006F
<b>De Anza</b>						
Female	1,502	1,275	1,288	851	508	315
Male	1,163	918	986	635	381	251
Unrecorded	16	14	8	9	3	3
<b>Total</b>	<b>2,681</b>	<b>2,207</b>	<b>2,282</b>	<b>1,495</b>	<b>892</b>	<b>569</b>
<b>Foothill</b>						
Female	1,087	825	749	522	364	288
Male	866	720	644	451	313	271
Unrecorded	7	10	6	1	0	0
<b>Total</b>	<b>1,960</b>	<b>1,555</b>	<b>1,399</b>	<b>974</b>	<b>677</b>	<b>559</b>
<b>District</b>						
Female	2,589	2,100	2,037	1,373	872	603
Male	2,029	1,638	1,630	1,086	694	522
Unrecorded	23	24	14	10	3	3
<b>Total</b>	<b>4,641</b>	<b>3,762</b>	<b>3,681</b>	<b>2,469</b>	<b>1,569</b>	<b>1,128</b>

Source: FHDA IR&P Data Warehouse Deborah

FHDA IR&P - RBB - 6/1/07

**Fall End-of-Term Credit Headcount  
Permanent Residents by Age Group**

College/Age Group	2001F	2002F	2003F	2004F	2005F	2006F
<b>De Anza</b>						
19 or less	631	472	615	325	165	81
20 - 24	755	563	651	580	354	232
25 - 29	427	376	330	172	119	65
30 - 34	341	314	245	140	85	63
35 - 39	219	200	179	105	51	30
40 - 49	234	214	189	126	85	68
50 - 59	54	45	62	37	27	24
60 +	20	23	11	10	6	6
<b>Total</b>	2,681	2,207	2,282	1,495	892	569
<b>Foothill</b>						
19 or less	362	273	241	165	116	103
20 - 24	505	304	328	246	149	99
25 - 29	345	249	223	134	97	71
30 - 34	275	265	204	122	96	78
35 - 39	169	162	117	89	62	66
40 - 49	178	162	147	110	70	73
50 - 59	80	94	77	49	36	28
60 +	46	46	62	59	51	41
<b>Total</b>	1,960	1,555	1,399	974	677	559
<b>District</b>						
19 or less	993	745	856	490	281	184
20 - 24	1,260	867	979	826	503	331
25 - 29	772	625	553	306	216	136
30 - 34	616	579	449	262	181	141
35 - 39	388	362	296	194	113	96
40 - 49	412	376	336	236	155	141
50 - 59	134	139	139	86	63	52
60 +	66	69	73	69	57	47
<b>Total</b>	4,641	3,762	3,681	2,469	1,569	1,128

Source: FHDA IR&P Data Warehouse Deborah

FHDA IR&P - RBB - 6/1/07

**Fall End-of-Term Credit Headcount  
Permanent Residents by Highest Education**

College/Highest Education	2001F	2002F	2003F	2004F	2005F	2006F
<b>De Anza</b>						
AA/AS	131	85	52	37	19	13
Adult School	26	20	24	13	7	8
BA/BS	156	96	77	31	15	8
CA Certificate	25	35	19	11	6	1
Doctorate	11	9	5	1		
Foreign Degree	519	505	449	236	134	82
Foreign Secondary	267	186	262	202	174	128
HS Diploma	993	837	1,005	760	432	249
MA/MS	144	124	75	20	9	8
Not a HS Grad	124	95	106	65	33	28
Passed GED	189	196	188	108	51	29
Special Admit (K-12)	93	17	14	8	11	12
Unrecorded	3	2	6	3	1	3
<b>Total</b>	<b>2,681</b>	<b>2,207</b>	<b>2,282</b>	<b>1,495</b>	<b>892</b>	<b>569</b>
<b>Foothill</b>						
AA/AS	93	91	62	48	33	27
Adult School	21	18	20	12	7	6
BA/BS	114	115	62	52	42	29
CA Certificate	19	26	24	27	20	19
Doctorate	10	16	11	3	2	1
Foreign Degree	363	306	276	161	111	92
Foreign Secondary	260	156	197	132	91	74
HS Diploma	668	460	444	320	208	140
MA/MS	108	100	66	30	21	21
Not a HS Grad	70	53	58	40	23	30
Passed GED	112	105	105	60	34	28
Special Admit (K-12)	94	91	60	69	72	73
Unrecorded	28	18	14	20	13	19
<b>Total</b>	<b>1,960</b>	<b>1,555</b>	<b>1,399</b>	<b>974</b>	<b>677</b>	<b>559</b>
<b>District</b>						
AA/AS	224	176	114	85	52	40
Adult School	47	38	44	25	14	14
BA/BS	270	211	139	83	57	37
CA Certificate	44	61	43	38	26	20
Doctorate	21	25	16	4	2	1
Foreign Degree	882	811	725	397	245	174
Foreign Secondary	527	342	459	334	265	202
HS Diploma	1,661	1,297	1,449	1,080	640	389
MA/MS	252	224	141	50	30	29
Not a HS Grad	194	148	164	105	56	58
Passed GED	301	301	293	168	85	57
Special Admit (K-12)	187	108	74	77	83	85
Unrecorded	31	20	20	23	14	22
<b>Total</b>	<b>4,641</b>	<b>3,762</b>	<b>3,681</b>	<b>2,469</b>	<b>1,569</b>	<b>1,128</b>

Source: FHDA IR&P Data Warehouse Deborah  
FHDA IR&P - RBB - 6/1/07



**Fall End-of-Term Credit Headcount  
Permanent Residents by Educational Goal**

College/Educational Goal	2001F	2002F	2003F	2004F	2005F	2006F
<b>De Anza</b>						
AA/AS	92	70	95	61	52	35
Vocational Cert/Deg	85	88	85	66	43	23
Transfer	1,007	756	875	624	363	228
New career/Advance in job	446	401	304	148	82	59
Formulate plans, goals	117	86	89	50	28	20
Educational development	181	143	100	47	25	17
Improve basic skills	86	95	99	64	25	14
Credit for HS or GED	36	35	28	18	12	9
Undecided	631	533	607	417	262	164
<b>Total</b>	<b>2,681</b>	<b>2,207</b>	<b>2,282</b>	<b>1,495</b>	<b>892</b>	<b>569</b>
<b>Foothill</b>						
AA/AS	58	51	69	43	37	26
Vocational Cert/Deg	140	125	123	96	51	45
Transfer	610	450	453	301	175	125
New career/Advance in job	306	263	203	152	98	97
Formulate plans, goals	74	54	36	23	17	14
Educational development	131	139	100	59	46	41
Improve basic skills	78	62	57	36	19	13
Credit for HS or GED	18	11	12	5	3	1
Undecided	545	400	346	259	231	197
<b>Total</b>	<b>1,960</b>	<b>1,555</b>	<b>1,399</b>	<b>974</b>	<b>677</b>	<b>559</b>
<b>District</b>						
AA/AS	150	121	164	104	89	61
Vocational Cert/Deg	225	213	208	162	94	68
Transfer	1,617	1,206	1,328	925	538	353
New career/Advance in job	752	664	507	300	180	156
Formulate plans, goals	191	140	125	73	45	34
Educational development	312	282	200	106	71	58
Improve basic skills	164	157	156	100	44	27
Credit for HS or GED	54	46	40	23	15	10
Undecided	1,176	933	953	676	493	361
<b>Total</b>	<b>4,641</b>	<b>3,762</b>	<b>3,681</b>	<b>2,469</b>	<b>1,569</b>	<b>1,128</b>

Source: FHDA IR&P Data Warehouse Deborah  
FHDA IR&P - RBB - 6/1/07

**Fall End-of-Term Credit Headcount  
Permanent Residents by Day/Evening Status**

College/Day-Evening	2001F	2002F	2003F	2004F	2005F	2006F
<b>De Anza</b>						
Day	2,037	1,712	1,847	1,283	778	487
Evening	644	495	435	212	114	82
<b>Total</b>	<b>2,681</b>	<b>2,207</b>	<b>2,282</b>	<b>1,495</b>	<b>892</b>	<b>569</b>
<b>Foothill</b>						
Day	1,425	1,151	1,121	785	554	444
Evening	535	404	278	189	123	115
<b>Total</b>	<b>1,960</b>	<b>1,555</b>	<b>1,399</b>	<b>974</b>	<b>677</b>	<b>559</b>
<b>District</b>						
Day	3,462	2,863	2,968	2,068	1,332	931
Evening	1,179	899	713	401	237	197
<b>Total</b>	<b>4,641</b>	<b>3,762</b>	<b>3,681</b>	<b>2,469</b>	<b>1,569</b>	<b>1,128</b>

**Fall End-of-Term Average Units Earned  
Permanent Residents by Day/Evening Status**

College/Day-Evening	2001F	2002F	2003F	2004F	2005F	2006F
<b>De Anza</b>						
Day	7.63	7.58	8.97	9.30	8.83	8.43
Evening	4.15	4.19	4.61	4.37	4.71	4.54
<b>Total</b>	<b>6.80</b>	<b>6.82</b>	<b>8.13</b>	<b>8.60</b>	<b>8.30</b>	<b>7.87</b>
<b>Foothill</b>						
Day	7.60	6.81	7.56	7.09	6.40	5.75
Evening	3.81	3.99	3.45	3.58	3.09	2.48
<b>Total</b>	<b>6.56</b>	<b>6.08</b>	<b>6.74</b>	<b>6.40</b>	<b>5.80</b>	<b>5.08</b>
<b>District</b>						
Day	7.62	7.27	8.43	8.46	7.82	7.15
Evening	3.99	4.10	4.16	3.99	3.87	3.34
<b>Total</b>	<b>6.70</b>	<b>6.51</b>	<b>7.61</b>	<b>7.73</b>	<b>7.22</b>	<b>6.49</b>

Source: FHDA IR&P Data Warehouse Deborah  
FHDA IR&P - RBB - 6/1/07

**Fall End-of-Term Credit Headcount  
Permanent Residents by Fulltime/Parttime Status**

College/Fulltime-Parttime	2001F	2002F	2003F	2004F	2005F	2006F
<b>De Anza</b>						
Full-time	828	684	944	673	364	209
Part-time	1,853	1,523	1,338	822	528	360
<b>Total</b>	<b>2,681</b>	<b>2,207</b>	<b>2,282</b>	<b>1,495</b>	<b>892</b>	<b>569</b>
<b>Foothill</b>						
Full-time	536	361	394	248	135	96
Part-time	1,424	1,194	1,005	726	542	463
<b>Total</b>	<b>1,960</b>	<b>1,555</b>	<b>1,399</b>	<b>974</b>	<b>677</b>	<b>559</b>
<b>District</b>						
Full-time	1,364	1,045	1,338	921	499	305
Part-time	3,277	2,717	2,343	1,548	1,070	823
<b>Total</b>	<b>4,641</b>	<b>3,762</b>	<b>3,681</b>	<b>2,469</b>	<b>1,569</b>	<b>1,128</b>

**Fall End-of-Term Credit Headcount  
Permanent Residents by Ethnicity**

College/Ethnicity	2001F	2002F	2003F	2004F	2005F	2006F
<b>De Anza</b>						
Asian	1,449	1,188	1,319	867	534	339
Filipino	137	111	125	76	52	39
Pacific Islander	54	25	17	8	3	2
African American	66	52	64	48	29	16
Hispanic	193	194	216	167	85	55
White	347	276	281	195	126	71
*Unrecorded	435	361	260	134	63	47
<b>Total</b>	<b>2,681</b>	<b>2,207</b>	<b>2,282</b>	<b>1,495</b>	<b>892</b>	<b>569</b>
<b>Foothill</b>						
Asian	639	541	469	346	254	228
Filipino	53	36	40	25	12	12
Pacific Islander	21	16	15	3	7	6
African American	21	26	24	21	9	7
Hispanic	472	347	403	271	171	137
White	384	308	269	210	152	114
*Unrecorded	370	281	179	98	72	55
<b>Total</b>	<b>1,960</b>	<b>1,555</b>	<b>1,399</b>	<b>974</b>	<b>677</b>	<b>559</b>
<b>District</b>						
Asian	2,088	1,729	1,788	1,213	788	567
Filipino	190	147	165	101	64	51
Pacific Islander	75	41	32	11	10	8
African American	87	78	88	69	38	23
Hispanic	665	541	619	438	256	192
White	731	584	550	405	278	185
*Unrecorded	805	642	439	232	135	102
<b>Total</b>	<b>4,641</b>	<b>3,762</b>	<b>3,681</b>	<b>2,469</b>	<b>1,569</b>	<b>1,128</b>

FHDA IR&P - RBB - 6/1/07

**Fall End-of-Term Credit Headcount  
Permanent Residents by Ethnicity**

College/CCD District	2001F	2002F	2003F	2004F	2005F	2006F
<b>De Anza</b>						
Foothill Service Area	113	89	93	52	26	16
De Anza Service Area	854	680	717	477	300	194
San Mateo CCD	42	40	25	16	10	8
San Jose-Evergreen CCD	686	569	610	414	256	159
West Valley-Mission CCD	796	604	668	451	252	166
Gavilan Joint CCD	14	10	11	8	5	8
Other California CCD	176	215	158	77	43	18
<b>Total</b>	<b>2,681</b>	<b>2,207</b>	<b>2,282</b>	<b>1,495</b>	<b>892</b>	<b>569</b>
<b>Foothill</b>						
Foothill Service Area	713	508	487	325	217	189
De Anza Service Area	321	294	231	160	120	90
San Mateo CCD	269	184	163	107	69	48
San Jose-Evergreen CCD	204	177	163	108	82	61
West Valley-Mission CCD	252	186	175	131	82	67
Gavilan Joint CCD	4	7	13	16	12	15
Other California CCD	197	199	167	127	95	89
<b>Total</b>	<b>1,960</b>	<b>1,555</b>	<b>1,399</b>	<b>974</b>	<b>677</b>	<b>559</b>
<b>District</b>						
Foothill Service Area	826	597	580	377	243	205
De Anza Service Area	1,175	974	948	637	420	284
San Mateo CCD	311	224	188	123	79	56
San Jose-Evergreen CCD	890	746	773	522	338	220
West Valley-Mission CCD	1,048	790	843	582	334	233
Gavilan Joint CCD	18	17	24	24	17	23
Other California CCD	373	414	325	204	138	107
<b>Total</b>	<b>4,641</b>	<b>3,762</b>	<b>3,681</b>	<b>2,469</b>	<b>1,569</b>	<b>1,128</b>

Source: FHDA IR&P Data Warehouse Deborah  
FHDA IR&P - RBB - 6/1/07