

IRP@FHDA

Methods and Procedures Used by FHDA to Validate and Report MIS CB25 and CB26 Data

Overview

This document describes key methods and procedures used to validate and report CB25 (Course General Education Status) and CB26 (Course Support status) data in the CB (Course Data) quarterly report submitted by FHDA to the MIS unit of the CCCCCO (California Community Colleges Chancellor's Office). In Section I of this document, Table 1 and Table 2 provide a crosswalk between codes for MIS CB25 and course degree attributes (Banner—Course Degree Attributes) for De Anza College and Foothill College, respectively. Figure 1 and Figure 2 shows factors taken into account to assess what CB25 code should be reported for English/ESL and mathematics courses, respectively. In Section II, Table 3 identifies degree attribute codes used to identify support courses (CB26).

Coding for CB25 is mainly based on documentation published for IGETC (Intersegmental General Education Transfer Curriculum) and CSU GE Breadth (California State University General Education Breadth Requirement) certificates or degree requirements at the local college. Data for courses meeting general education requirements for English composition or analytical thinking/mathematics competency at four-year institutions were provided by articulation officers at each college. For CB26, separate codes for support in the areas of English/ESL or mathematics were created for each college. Curriculum coordinators and the senior technician identified all active courses, as of summer 2019, that were applicable to CB25 and CB26, and entered the data in the Banner and COCI (CCCCO Curriculum Course Inventory) system. Data cleanup reports were created to identify discrepancies between data in the MIS CB reports for summer 2019 (Banner data extracts) and COCI. All issues specific to the summer term were resolved prior to the estimate data submission date.

Section I

MIS CB25 Course General Education Status

- **CB25** indicates whether a course fulfills general education requirements for:
 - Mathematics/quantitative reasoning, or
 - English composition in the context of transfer, degree, and certificate programs.
- **CB25 equals “A” means when the course meets any of the following:**
 - CSU General Education Breadth Area A2: Written Communication
 - CSU General Education Breadth Area A3: Critical Thinking
 - UC IGETC Area 1A: English Composition
 - UC IGETC Area 1B: Critical Thinking-English Composition,

OR

 - Course has a general education certification or articulation agreement that ensures the course fulfills English composition requirements at an accredited four-year institution

OR

 - Course fulfills local general education requirements for English Composition as outlined in Title 5 Section 55063
- **CB25 equals “B” when the course meets any of the following:**
 - CSU General Education Breadth Area B4: Mathematics/Quantitative Reasoning
 - UC IGETC Area 2: Mathematical Concepts and Quantitative Reasoning

OR

 - Course has a general education certification or articulation agreement that ensures the course fulfills mathematics or quantitative reasoning requirements at an accredited four-year institution.
- **CB25 equals “C” when the course:**
 - Course is not transferrable to fulfill general education mathematics or quantitative reasoning at a four-year institution, but fulfills local general education requirements for Analytical Thinking or Mathematics Competency as outlined in Title 5 section 55063

Table 1. De Anza: Crosswalk between MIS CB25 Criterion and FHDA Course Degree Attributes

MIS CB25 General Education Status		
English, "A"	Course Degree Applicable Attribute (STVATTR)	
<i>CB25 equals "A" if course meets any of the following:</i>	<i>Code</i>	<i>Description</i>
CSU General Education Breadth Area A2: Written Communication	CGA2	CSUGE A2 Written Communication
CSU General Education Breadth Area A3: Critical Thinking	CGA3	CSUGE A3 Critical Thinking
UC IGETC Area 1A: English Composition	IG1A	IGETC 1A English Composition
UC IGETC Area 1B: Critical Thinking-English Composition,	IG1B	IGETC 1B Crit Thinking/Comp
Course has a general education certification or articulation agreement that ensures the course fulfills English composition requirements at an accredited four-year institution	2G4E	DA and 4-yr GE English Comp Ag
Course fulfills local general education requirements for English Composition as outlined in Title 5 Section 55063	2GA1	AA/AS English Composition
Mathematics, "B" or "C"		
<i>CB25 equals "B" if course meets any of the following:</i>		
CSU General Education Breadth Area B4: Mathematics/Quantitative Reasoning	CGB4	CSUGE B4 Mathematics
UC IGETC Area 2: Mathematical Concepts and Quantitative Reasoning	IG2X	IGETC 2 Mathematical Concepts
Course has a general education certification or articulation agreement that ensures the course fulfills mathematics or quantitative reasoning requirements at an accredited four-year institution.	2G4M	DA and 4-yr GE Math Ag
<i>CB25 equals "C" if course meets any of the following:</i>		
Course is not transferrable to fulfill general education mathematics or quantitative reasoning at a four-year institution, but fulfills local general education requirements for Analytical Thinking or Mathematics Competency as outlined in Title 5 section 55063	2GEM	Math Proficiency

Notes

STVATTR is the validation table in Banner; SCRATTR is the table that links the course to the attribute code.

Table 2. Foothill: Crosswalk between MIS CB25 Criterion and FHDA Course Degree Attributes

MIS CB25 General Education Status		
English, "A"	Course Degree Applicable Attribute (STVATTR)	
<i>CB25 equals "A" if course meets any of the following:</i>	<i>Code</i>	<i>Description</i>
CSU General Education Breadth Area A2: Written Communication	CGA2	CSUGE A2 Written Communication
CSU General Education Breadth Area A3: Critical Thinking	CGA3	CSUGE A3 Critical Thinking
UC IGETC Area 1A: English Composition	IG1A	IGETC 1A English Composition
UC IGETC Area 1B: Critical Thinking-English Composition,	IG1B	IGETC 1B Crit Thinking/Comp
Course has a general education certification or articulation agreement that ensures the course fulfills English composition requirements at an accredited four-year institution	1G4E	FH and 4-yr GE English Comp Ag
Course fulfills local general education requirements for English Composition as outlined in Title 5 Section 55063	1GA1	AA/AS English Composition-FH
Mathematics, "B" or "C"		
<i>CB25 equals "B" if course meets any of the following:</i>		
CSU General Education Breadth Area B4: Mathematics/Quantitative Reasoning	CGB4	CSUGE B4 Mathematics
UC IGETC Area 2: Mathematical Concepts and Quantitative Reasoning	IG2X	IGETC 2 Mathematical Concepts
Course has a general education certification or articulation agreement that ensures the course fulfills mathematics or quantitative reasoning requirements at an accredited four-year institution.	1G4M	FH and 4-yr GE Math Ag
<i>CB25 equals "C" if course meets any of the following:</i>		
Course is not transferrable to fulfill general education mathematics or quantitative reasoning at a four-year institution, but fulfills local general education requirements for Analytical Thinking or Mathematics Competency as outlined in Title 5 section 55063	1GEM	Math Proficiency

Notes

STVATTR is the validation table in Banner; SCRATTR is the table that links the course to the "degree attribute" code.

Section II

FHDA Course Degree Attributes used for MIS CB26 Course Support Status

CB26 is equal to 'S' when the course has been designed to provide support to a related degree-applicable course for the purpose of helping students complete the related course.

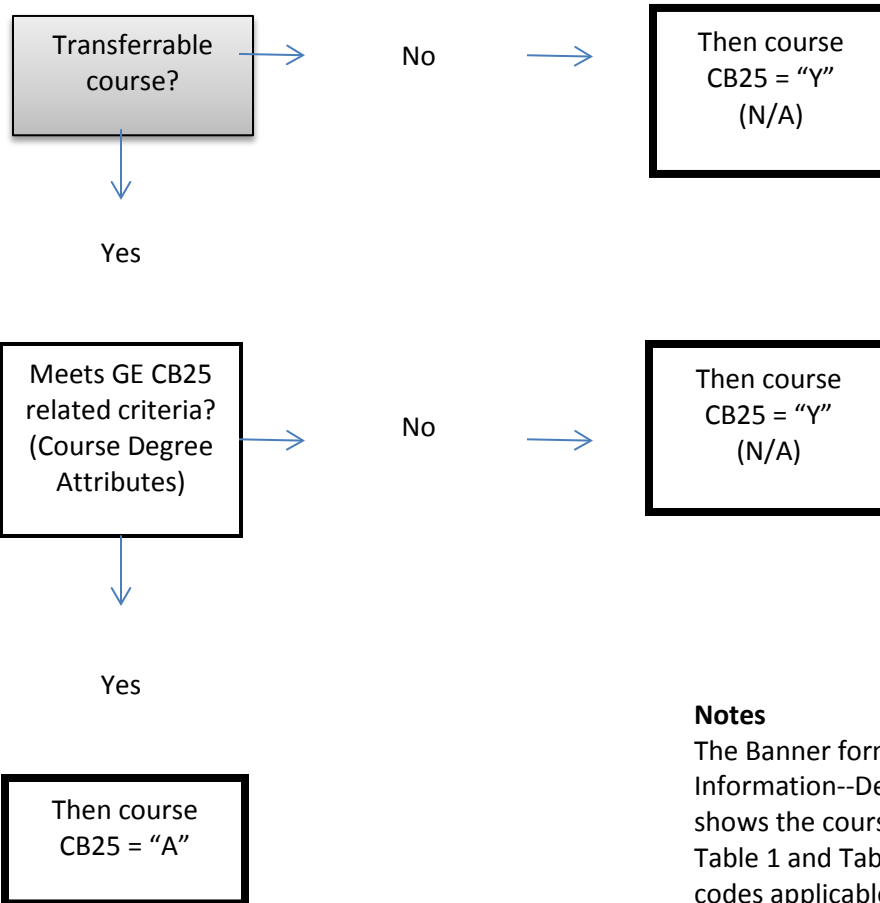
Table 3. Course Degree Applicable Attributes for CB26 equal to 'S'

STVATTR Code	Description
1SUE	FH Support Course English-CB26
1SUM	FH Support Course Math-CB26
2SUE	DA Support Course English-CB26
2SUM	DA Support Course Math-CB26

Notes

STVATTR is the validation table in Banner; SCRATTR is the table that links the course to the "degree attribute" code.

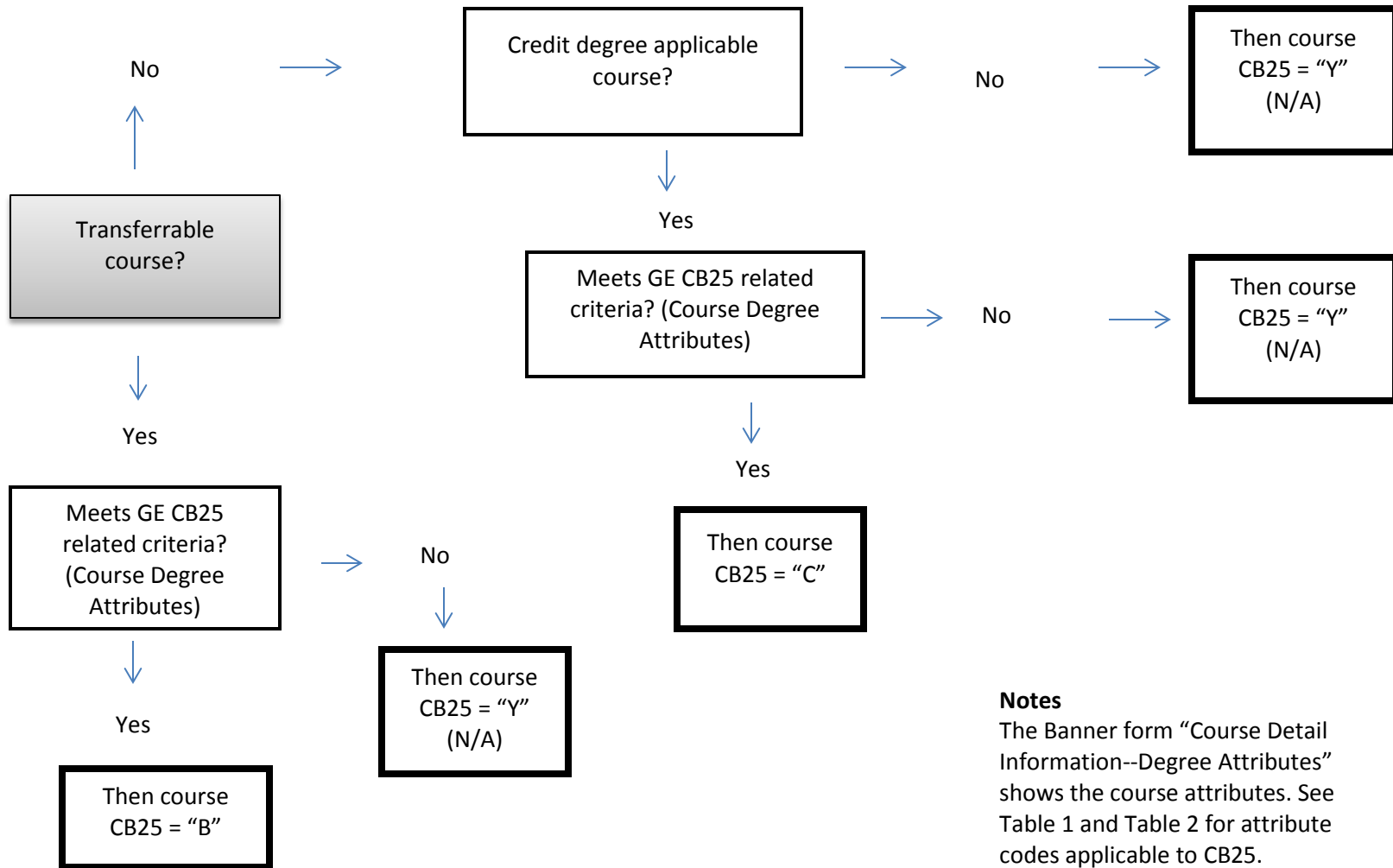
Figure 1. CB25 Course General Education Status, English



Notes

The Banner form "Course Detail Information--Degree Attributes" shows the course attributes. See Table 1 and Table 2 for attribute codes applicable to CB25.

Figure 2. CB25 Course General Education Status, Mathematics



Notes
 The Banner form "Course Detail Information--Degree Attributes" shows the course attributes. See Table 1 and Table 2 for attribute codes applicable to CB25.