

IRP@FHDA

To: Lisa Mandy, Director of Financial Aid & Scholarships, De Anza College
Kevin Harral, Director of Financial Aid, Foothill College

From: Lourdes Del Rio-Parent, PhD, Sr. Research Analyst/Data Warehouse Coordinator FHDA

Date: 16 October 2019

Re: Trend Analysis for Financial Aid and Student Headcount Data, 2009-10 to 2018-19

Introduction

The 2018-19 MIS financial aid reports (SF, FA) for the Foothill-De Anza Community College District (FHDA) were submitted to the California Community Colleges Chancellor's Office on October 11, 2019. This document provides the following:

- A summary of the data submitted, including changes in student headcount by financial aid award type at each college for the reporting and prior academic years
- Trend analyses to explore factors related to the significant decline in the number of students who received financial assistance at each college. Data for the last ten (2009-10 to 2018-19) and six (2013-14 to 2018-19) academic years were used to identify the extent to which changes in the number of students who received financial assistance at each college were related to changes in the number full-time students at the college, were classified as CCPG (California College Promise Grant) eligible, or their median EFC (expected family contribution to college attendance costs for those who applied for federal financial aid).
- Results for trend analyses. The data shown here indicate that the significant decline in the number of students who received financial assistance at each college can be accounted not only by a related decline in the number of full-time students, but also by a significant drop in the number of students classified as needing financial assistance (i.e., CCPG eligible). The data also show differences across colleges. While at Foothill College the significant decline in the headcount for full-time students during the last six years accounts to a large degree for a similar decline in the number of students who

received financial aid, at De Anza College the key factor relates to changes in the college student population: a significant decline in the number of full-time students eligible for financial aid during the last six academic years.

Data Cleanup Procedures

Preliminary statistics (i.e., headcounts and dollar amounts) by award type and FHDA detail/fund code for the prior and current reporting academic year (2017-18 and 2018-19) for each college were posted on the FHDA MIS Financial webpage on September 2019.¹ The lookup or crosswalk table for FHDA detail/fund and MIS financial aid codes on this webpage was updated to reflect recent updates. Financial aid directors at the colleges were informed about the posting of the preliminary statistics and crosswalk documents on the website; they were also asked to review the data and report any errors or issues prior to the final submission. Financial aid directors were also notified of records rejected by the MIS server.² By the end of the submission, records for six Foothill College students (all CCPG or Pell recipients) were deleted because of errors with their financial application data; the Financial Aid director at this College did not answer several requests to review or update the data for the rejected records.³

Summary of Data Submitted in the MIS Financial Aid Reports, Academic Years 2017-18 and 2018-19

A summary of the data in the MIS Financial Aid reports submitted for the last two academic years (2017-18 and 2018-19) was posted at the FHDA MIS Report webpage.⁴ Key findings in this document include the following:

- The number of students who received any type of financial aid or scholarship at the FHDA CCD declined 8% (15,116 to 13,960) in 2018-19, when compared to the figure for the prior academic year. For De Anza College, the

¹ http://research.fhda.edu/mis_reports/mis_financial_aid

² Access to a secure folder with documents in Office 365 was provided to financial aid directors.

³ Email messages to financial aid directors were sent on September 20, October 2 & 3

⁴ MIS Financial Aid Summary, FHDA CCD, 2019 (October, 2019).

decline in student headcount for this category was 7% (9,682 to 8,995); for Foothill College, the decline was 5% (6,025 to 5,735).

- For the most part, the drop in the number of students who received any type of financial aid or scholarship during the last two academic years at each college is accounted by a similar decline in the number of students who received at any CCPG (California College Promise Grant) enrollment fee waiver during this period. At De Anza College, the student headcount for CCPG awards declined 8% (9,286 to 8,578) in 2018-19 over the previous year; at Foothill College, the CCPG award headcount declined 4% (5,678 to 5,445) for the same period.

Summary of Results for Trend Analysis of Enrollment and Financial Aid Data, 2009-10 to 2018-19

In order to gain a better understanding of factors that may account for the decline in the number of students who received financial assistance at either De Anza College or Foothill College, trends or changes in the number of full-time students⁵ at the college and the number who received financial aid (e.g., number of full-time students who were awarded at least one enrollment fee waiver or Pell grant) for the last ten (2009-10 to 2018-19) and six (2013-14 to 2018-19) academic years were compared. Changes in student headcount for CCPG eligibility (i.e., eligible for an enrollment fee waivers) and the median EFC (expected family contribution to college attendance costs) for each academic year were also compared to changes in full-time student headcount at each college during the last six academic years (period with the most significant decline in the student headcount for full-time enrollment and financial aid). Data for this analysis are shown in Table 1 to Table 6. Key findings shown in these tables include:

- Data in Table 1 show that the number of students who received any type of financial assistance at De Anza College declined 12% between 2009-10 and 2018-19 (10,118 to 8,996). When the student headcount for 2018-19 is compared to the highest headcount for financial assistance at De Anza during the last ten academic years, 2013-14, the data show a 30% drop (12,772 to

⁵ To receive financial aid, most students are required to enroll in at least 12 credit units during the term for which they receive the award.

8,996). Data in Table 1 also show that the large majority (95% to 99%) of students who received any type of financial aid assistance at any of the colleges also received at least one CCPG (enrollment fee waiver) or Pell grant award.

- Data for Foothill College in Table 1 show an increase of 21% for the number of students who received any type of financial aid assistance in 2018-19, when compared to the number for 2009-10 (4,722 to 5,735). However, when compared to the highest headcount for financial assistance at Foothill College within the last 10 academic years, 2012-13, the data show a decline of 16% (6,847 to 5,735).
- Student headcount for enrollment by full-time and part-time status are shown in Table 2. Full-time status refers to enrollment in at least 12 credit units during any term of the academic year at the college based on academic history (i.e., attempted credit units for the term); all other students (attempted at least one, but less than 12 credit units at any term of the academic year) were classified as part-time.⁶ For De Anza College, data in Table 2 show that the number of full-time students declined 15% (15,027 to 12,799) between 2009-10 and 2018-19, while the number for part-time students declined 32% (24,244 to 16,476) during the same period. The data also show that enrollment at De Anza for full-time students peaked in 2014-15 (15,373; 17% higher than in 2018-19); however, part-time enrollment had continuously declined at De Anza College since 2009-10.
- Data for Foothill College in Table 2 show that the numbers for full-time and part-time students have each declined 5% in 2018-19, when compared to their respective numbers in 2009-10. Within the last ten academic years, the headcount for full-time students at Foothill College peaked in 2015-16 (8,197); 17% higher than in 2018-19 (6,839). For part-time students, the highest headcount at Foothill College within the last ten year was in 2017-18 (24,802), 6% higher than in 2018-19 (24,802).

⁶ Headcount statistics are usually based on the number of attempted units by census date, as shown in the registration table. However, registration data for 2009-10 in the current information system, Banner, are not available or reliable. To account for grade forgiveness/replacement, the highest number for attempted, earned, or quality units was used to derive part-time or full-time status during the term.

- Data in Table 2 show that the ratio of full-time to part-time students has significantly increased at De Anza College during the last ten years (0.62 to 0.78). The data show this trend is mainly driven by a faster decline in the number of part-time students (32%), when compared to the decline for full-time students (15%) at this College within this period.
- Ratio figures in Table 2 show that at Foothill College the number of part-time students has been close to or about three times larger than the number of full-time students (0.29 to 0.38) during the last ten academic years. Increases in the ratio of full-time to part-time students (up to 0.38) from 2011-12 to 2015-16 were mainly due to a significant decline in the number of part-time students between 2009-10 and 2010-11. Since 2011-13, the number of part-time students has increased significantly until 2018-19, when it declined about 6% (24,802 to 23,326) over the prior academic year.
- Data in Table 3 compare changes in the number of full-time students and the number of these who received at least one CCPG or Pell grant award during the last ten academic years. Data for De Anza College show that although changes in the number of full-time students are related to changes in the number of students who received at least one CCPG or Pell grant award, this relationship has varied during this period (i.e., the factors do not always correlate or change in the same direction). As shown in this table, the percentage of full-time students who received at least one CCPG or Pell grant award has ranged from 65% to 83% within the last ten academic years, which suggest that other factors may account for changes in the number of students who received financial assistance at the College during this period.
- Data for Foothill College in Table 3 show that while the number of full-time students declined 5% (7,180 to 6,839) in 2018-19, when compared to the number in 2009-10, the percentage of students in this category who received at least one CCPG or Pell grant award increased by 22 percentage points (65% to 87%) during the same period. These findings suggest changes in the college student population within the last ten years as it relates to the need for financial aid.
- To better understand the relationship between headcounts for full-time students and financial aid assistance, data trends for these two factors during

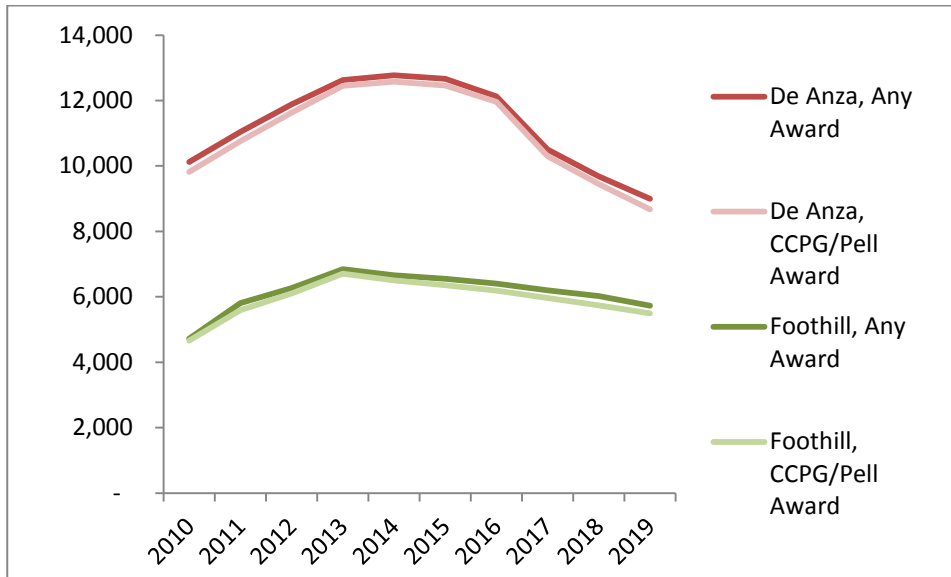
the last six academic years (2013-14 to 2018-19) were explored given their significant decline at both colleges during this period. As shown by data in Table 4, while at De Anza College the headcount for full-time students had declined by 16% (15,245 to 12,799) within the last six years, the headcount for CCPG or Pell grant award recipients declined by almost twice as much, or 31% (12,576 to 8,679) during the same period. Data in Table 3 also show that the percentage of full-time students who received at least one CCPG or Pell grant award at this College declined 15% (82% to 68%) between 2013-14 and 2018-19.

- For Foothill College, data in Table 4 show a closer relationship between full-time enrollment and financial aid assistance: a decline of 14% (7,916 to 6,839) and 15% (6,500 to 5,493) in the number of students who enrolled full-time and the number of students in this group who received at least a CCPG or Pell grant award, respectively, between 2013-14 and 2018-19. Data in Table 3 show that the percentage of full-time students who received at least one CCPG or Pell grant award increased 5% (82% to 87%) during this period.
- To explore whether changes in the profile of the college student population (e.g., need for financial aid) can help explain the decline in the number of students who received financial aid assistance at each college, trends for EFC (Expected Family Contribution to educational expenses) and CCPG eligibility (whether the student is eligible for a fee enrollment waiver) within the last six years at each college were analyzed. Data in Table 5 show that the median EFC (midpoint in the distribution) at De Anza College increased 300% (40 to 160) between 2013-14 and 2018-19, while at Foothill College the median EFC increased 149% (163 to 407) during the same period.
- Data for CCPG eligibility in Table 6 show that the number of full-time students classified as CCPG eligible at De Anza declined 31% (7,203 to 5,005) between 2013-14 and 2018-19; the percentage of full-time students classified as CCPG eligible at this College declined by 8% (47% to 39%) during the same period. These findings suggest that in addition to a significant decline in student full-time enrollment, a significant drop in the number of full-time students with documented financial need is what accounts to a large degree for the significant decline in the number of students who received financial assistance at this College during the last six academic years.

- Data for Foothill College in Table 6 show that changes in the number of full-time CCPG eligible students between 2013-14 and 2018-19 were closely related to changes in the number of full-time students during this period. The number of full-time students at this College declined 14% (7,916 to 6,839) during the last six academic years, while the number for this group of students classified as CCPG eligible declined by 17% (3,034 to 2,513). Data also show that the percentage of full-time CCPG eligible students at this College declined by 1% (38% to 37%) during this period. These findings suggest that at Foothill College the key factor that accounts for a significant drop in the number of students who received financial assistance in recent academic years is the significant drop in the number of full-time students at this College during this period.

Table 1. Student Headcount by College, Academic Year, and Financial Aid Award Type

	Academic Year										Ten-Year Change	
	2010	2011	2012	2013	2014	2015	2016	2017	2018	2019	Count	Percent
De Anza												
CCPG/Pell Award	9,816	10,762	11,627	12,451	12,576	12,458	11,959	10,303	9,445	8,679	(1,137)	-12%
Any Fin Aid Award	10,118	11,045	11,887	12,623	12,772	12,661	12,128	10,506	9,682	8,996	(1,122)	-11%
CCPG/Pell Award Percent	97%	97%	98%	99%	98%	98%	99%	98%	98%	96%		-1%
Foothill												
CCPG/Pell Award	4,661	5,592	6,105	6,709	6,500	6,357	6,186	5,962	5,741	5,493	832	18%
Any Fin Aid Award	4,722	5,810	6,271	6,847	6,658	6,555	6,403	6,201	6,025	5,735	1,013	21%
CCPG/Pell Award Percent	99%	96%	97%	98%	98%	97%	97%	96%	95%	96%		-3%



Notes

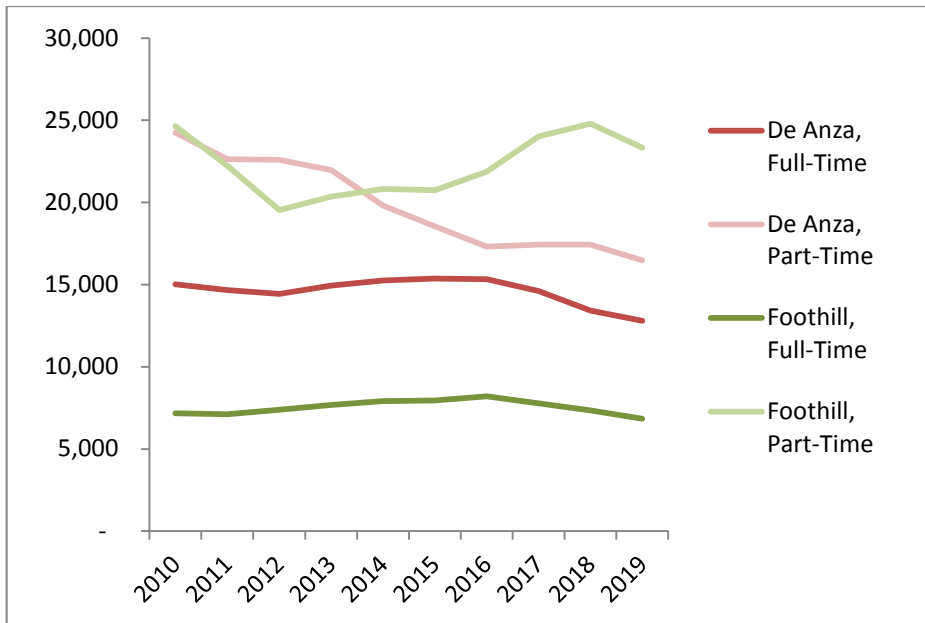
Academic Year: The calendar year when the academic year ends. For example, 2010 is equal to 2009-10.

CCPG/Pell Award: Include any student who received a California College Promise (enrollment fee waiver) or Pell grant award during the academic year at the college.

Any Fin Aid Award: Include any student who received any type of financial aid assistance or scholarship during the academic year at the college.

Table 2. Student Headcount by College, Academic Year, and Full-Time Status

	Academic Year										Ten-Year Change	
	2010	2011	2012	2013	2014	2015	2016	2017	2018	2019	Count	Percent
De Anza												
Full-Time	15,027	14,667	14,431	14,940	15,245	15,373	15,328	14,614	13,419	12,799	(2,228)	-15%
Part-Time	24,244	22,637	22,590	21,963	19,818	18,540	17,308	17,437	17,440	16,476	(7,768)	-32%
Ratio	0.62	0.65	0.64	0.68	0.77	0.83	0.89	0.84	0.77	0.78		16%
Foothill												
Full-Time	7,180	7,122	7,388	7,670	7,916	7,947	8,197	7,777	7,349	6,839	(341)	-5%
Part-Time	24,643	22,243	19,531	20,360	20,814	20,747	21,879	24,008	24,802	23,326	(1,317)	-5%
Ratio	0.29	0.32	0.38	0.38	0.38	0.38	0.37	0.32	0.30	0.29		0%



Notes

Academic Year: The calendar year when the academic year ends. For example, 2010 is equal to 2009-10.

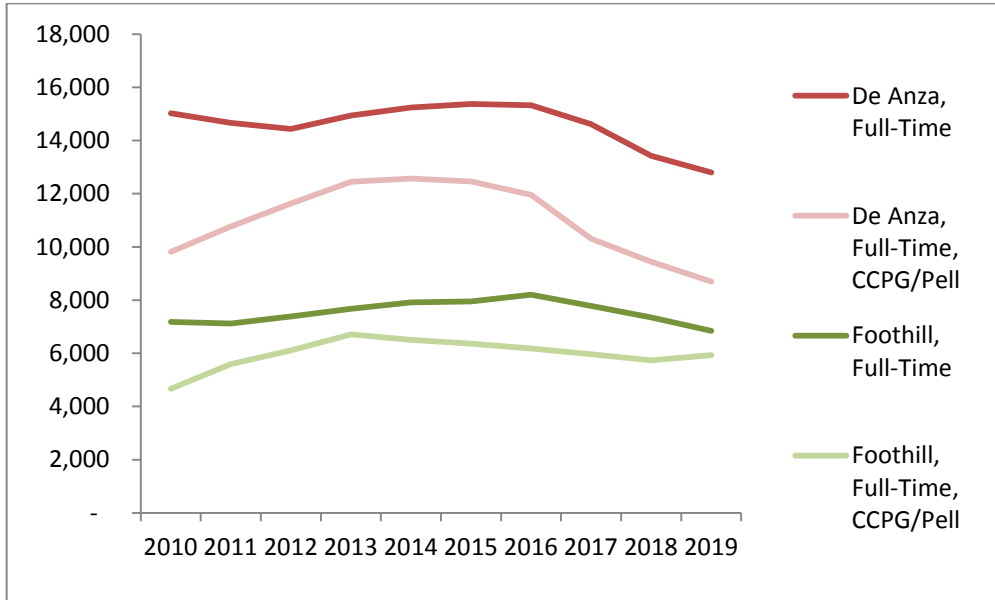
Full-Time: Attempted at least 12 credit units during any term of the academic year at the college, as shown by academic history/transcript data (Banner, SHRTGPA).

Part-Time: Attempted at least 1 credit unit, but no more than 12 units on any term of the academic year at the college, as shown by academic history/transcript data (Banner, SHRTGPA).

Ratio: Ratio of full-time to part-time students (full-time divided by part-time).

Table 3. Student Headcount by College, Academic Year, Full-Time Status, and CCPG/Pell Recipient Status

College	Academic Year										Ten-Year Change	
	2010	2011	2012	2013	2014	2015	2016	2017	2018	2019	Count	Percent
De Anza												
Full-Time	15,027	14,667	14,431	14,940	15,245	15,373	15,328	14,614	13,419	12,799	(2,228)	-15%
Full -Time, CCPG/Pell	9,816	10,762	11,627	12,451	12,576	12,458	11,959	10,303	9,445	8,698	(1,118)	-11%
Percent CCPG/Pell	65%	73%	81%	83%	82%	81%	78%	71%	70%	68%		3%
Foothill												
Full-Time	7,180	7,122	7,388	7,670	7,916	7,947	8,197	7,777	7,349	6,839	(341)	-5%
Full -Time, CCPG/Pell	4,661	5,592	6,105	6,709	6,500	6,357	6,186	5,962	5,741	5,927	1,266	27%
Percent CCPG/Pell	65%	79%	83%	87%	82%	80%	75%	77%	78%	87%		22%



Notes

Academic Year: The calendar year when the academic year ends. For example, 2010 is equal to 2009-10.

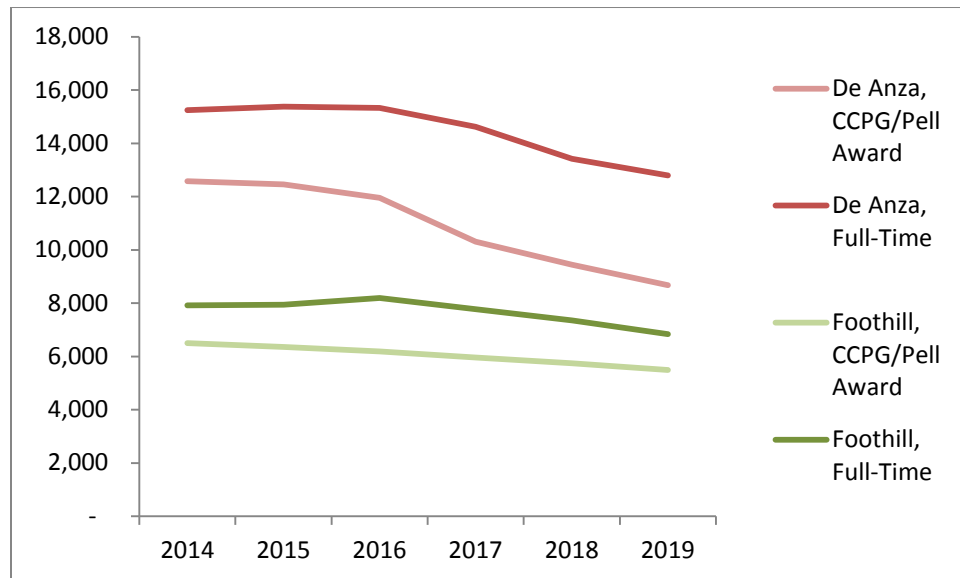
Full-Time: Attempted at least 12 credit units during any term of the academic year at the college, as shown by academic history/transcript data (Banner, SHRTGPA).

CCPG/Pell Award: Include any full-time student who received a California College Promise Grant (enrollment fee waiver) or Pell grant award during the academic year at the college.

Percent CCPG/Pell: Percent of full-time students who received at least one CCPG or Pell award during the academic year at the college.

Table 4. Student Headcount by College, Academic Year, CCPG/Pell Recipient Status, Zero Amount CCPG, and Full-Time Status

College	Academic Year						Six-Year Change	
	2014	2015	2016	2017	2018	2019	Count	Percent
De Anza								
CCPG with \$0 Amount	160	98	645	131	88	64	(96)	-60%
CCPG/Pell Award	12,576	12,458	11,959	10,303	9,445	8,679	(3,897)	-31%
Percent CCPG Zero Amount	1%	1%	5%	1%	1%	1%		
Full-Time	15,245	15,373	15,328	14,614	13,419	12,799	-2446	-16%
Foothill								
CCPG with \$0 Amount	121	118	487	195	89	110	-11	-9%
CCPG/Pell Award	6,500	6,357	6,186	5,962	5,741	5,493	(1,007)	-15%
Percent CCPG Zero Amount	2%	2%	8%	3%	2%	2%		
Full-Time	7,916	7,947	8,197	7,777	7,349	6,839	(1,077)	-14%



Notes

Academic Year: The calendar year when the academic year ends. For example, 2010 is equal to 2009-10.

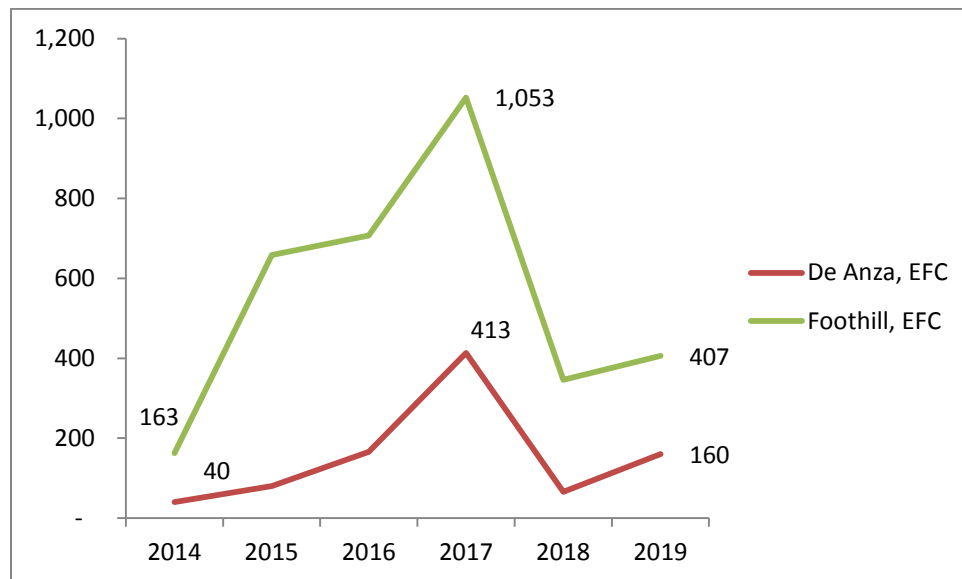
Full-Time: Attempted at least 12 credit units during any term of the academic year at the college, as shown by academic history/transcript data (Banner, SHRTGPA).

CCPG/Pell Award: Include any full-time student who received a California College Promise Grant (enrollment fee waiver) or Pell grant award during the academic year at the college.

CCPG with \$0 Amount: Student enrolled by census date who was awarded at least one CCPG award with \$0 amount during the academic year.

Table 5 . Student Headcount by College, Academic Year, and Full-Time Status, and Expected Family Contribution (EFC)

	Academic Year						Six-Year Change	
	2014	2015	2016	2017	2018	2019	Count	Percent
De Anza								
Median EFC	40	80	166	413	66	160	120	300%
Student Headcount (N)	7,363	7,608	7,207	6,419	5,597	5,241	(2,122)	-29%
Foothill								
Median EFC	163	658	708	1,053	346	407	244	149%
Student Headcount (N)	3,062	2,987	2,934	2,772	2,611	2,508	(554)	-18%

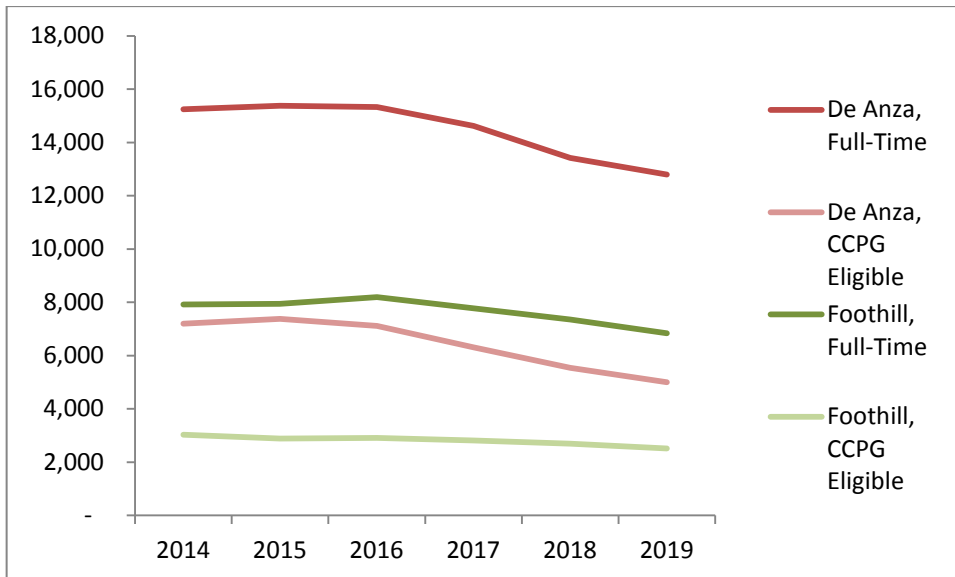


Notes

EFC: Expected Family Contribution based on FAFSA application data (Banner, RVRISIR).
 Student Headcount (N): Number of full-time students (attempted at least 12 credit units during any term of the academic year at the college) with EFC data.

Table 6. Student Headcount by College, Academic Year, and Full-Time Status, and CCPG Eligibility Status

Group	Academic Year						Six-Year Change	
	2014	2015	2016	2017	2018	2019	Count	Percent
De Anza								
Full-Time	15,245	15,373	15,328	14,614	13,419	12,799	(2,446)	-16%
CCPG Eligible	7,203	7,376	7,112	6,312	5,538	5,005	(2,198)	-31%
Percent CCPG Eligible	47%	48%	46%	43%	41%	39%		-8%
Foothill								
Full-Time	7,916	7,947	8,197	7,777	7,349	6,839	(1,077)	-14%
CCPG Eligible	3,034	2,890	2,908	2,813	2,699	2,513	(521)	-17%
Percent CCPG Eligible	38%	36%	35%	36%	37%	37%		-1%



Notes

Academic Year: The calendar year when the academic year ends. For example, 2010 is equal to 2009-10.

Full-Time: Attempted at least 12 credit units during any term of the academic year at the college, as shown by academic history/transcript data (Banner, SHRTGPA).

CCPG Eligible: Include any full-time student who was classified as eligible to receive a CCPG award.

Percent CCPG Eligible: Percent of full-time students classified as eligible to receive a CCPG award.